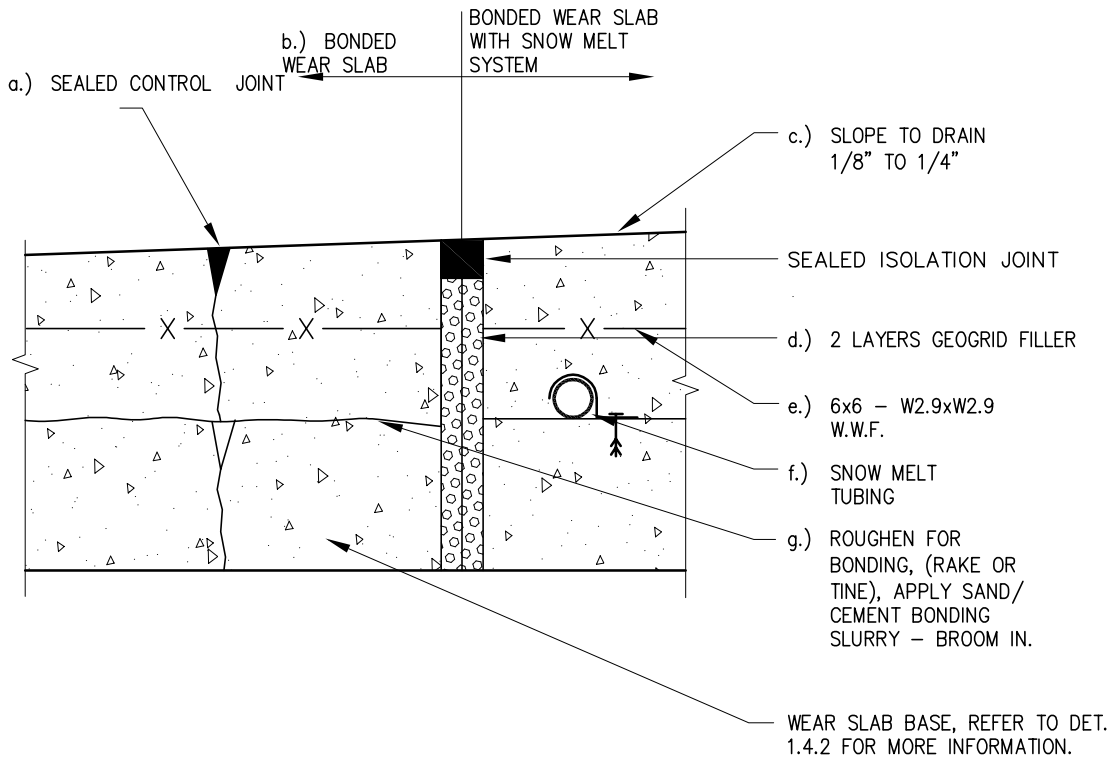


Notes: Component Functions

- a.) Reduces water entry.
- b.) Serves as "finished" wear slab surface with or without snowmelt.
- c.) Prevents surface water ponding; promotes rapid runoff to drains.
- d.) Prevents/reduces water entry.
- e.) Provides crack control.
- f.) Transfers heated liquid for snowmelting operations.
- g.) Provides a superior bonded surface with improved bonding area.



1.4.4

**PLAZA DECK SYSTEM -
BONDED WEAR SLAB**

CONCEPTUAL – NOT FOR CONSTRUCTION