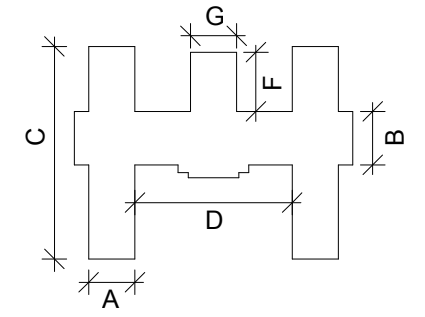
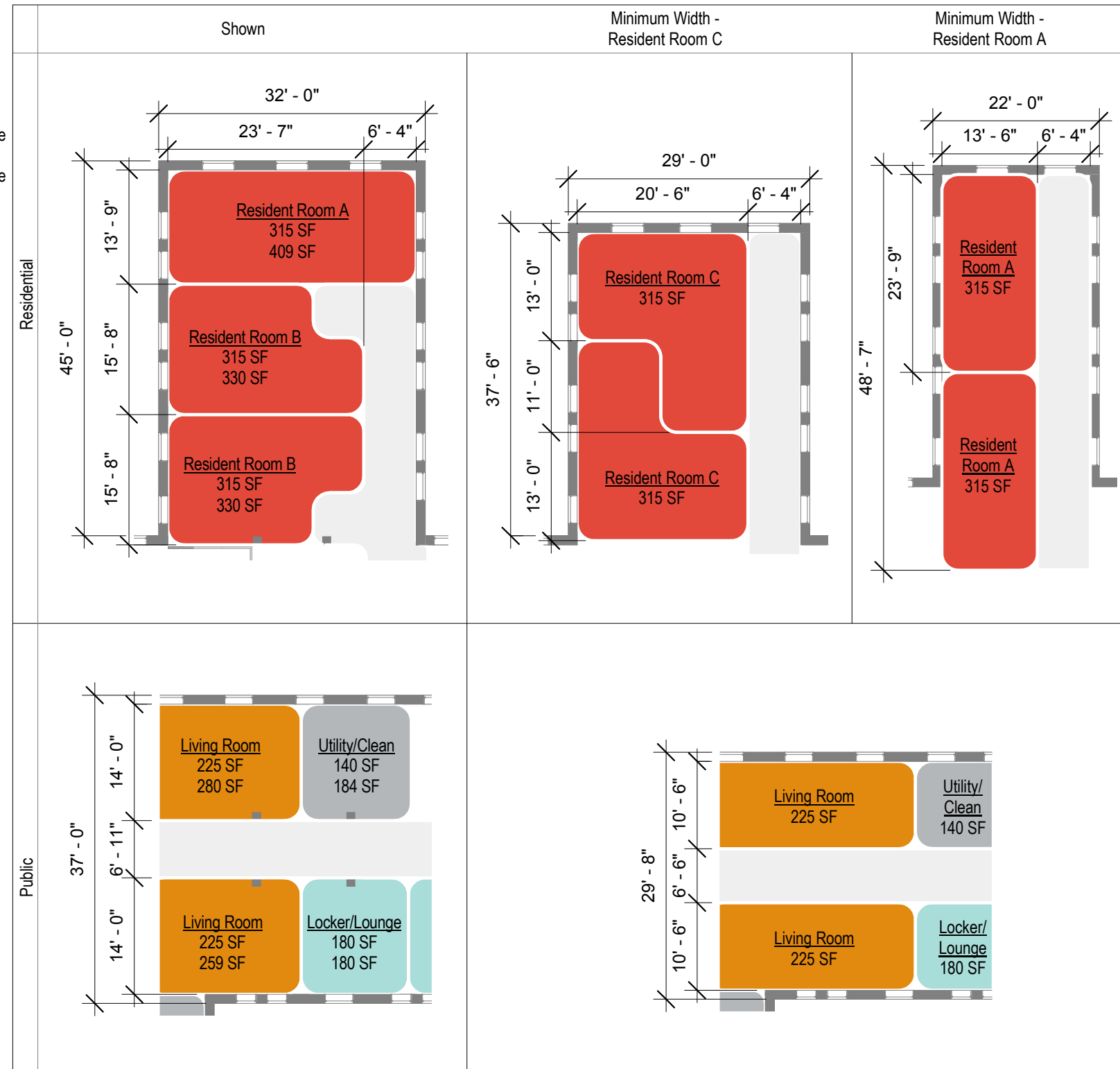


## Tool Workflow Part 2: Determine Required Program Space for CLC Home

- Determine required DGSF for CLC home by multiplying DGSF Per Resident (See Table 1.1) by required number of residents (10-14). *(Enter Requirements into Tool)*
  - Designer should reference the Space Planning Criteria, Chapter 106, following the functional program.
- Check existing building dimensions for CLC fatal flaws
  - Minimum 6' corridor width. *(Enter min. width of corridor into tool.)*
    - Dimension A must be greater than or equal to 29'-2" to accommodate Resident Rooms
    - Dimension B must be greater than or equal to 29'-8" to accommodate double loaded corridor with Support spaces
  - ADA Accessibility in all Resident and public spaces, both interior and exterior.
  - Retain access to exterior space.
- Tool generates number of residents that can be fit into building. *(Tool Output)*

Prototype - CLC Home + Neighborhood Services DGSF (per level)	Prototype - CLC Home DGSF (per level)
12939 SF	11689 SF

	per 10 Residents		per 12 Residents		per 14 Residents	
	Req. DGSF	Est. DGSF	Req. DGSF	Shown DGSF	Req. DGSF	Est. DGSF
per Resident	1061 SF	1103 SF	939 SF	974 SF	852 SF	882 SF
Total	10609 SF	11029 SF	11269 SF	11689 SF	11929 SF	12349 SF



Key Plan with Exterior Dimensions

### Bldg. 30 Tool Dimensions

- A : 32' - 0"
- B : 37' - 0"
- C : 148' - 0"
- D : 109' - 0"
- F : 41' - 0"
- G : 32' - 0"

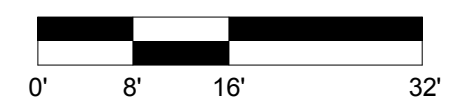
- STAFF AND ADMINISTRATION AREA
- RESIDENTIAL HOME AREA
- SUPPORT AREA
- NEIGHBORHOOD CENTER SUPPORT AREA
- EXISTING TO REMAIN
- NEW VERTICAL CIRCULATION
- STORAGE/UTILITY
- CIRCULATION
- OFFICE SUPPORT

Building 30 - Chillicothe, OH VA Medical Center Campus

NIBS/VA HISTORIC PRESERVATION REUSE INITIATIVE

Community Living Center (CLC) Prototype Workflow

05/03/2017

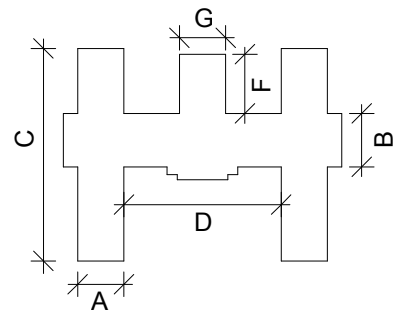


## Prototype Program Schedule

CLC Home Prototype Program Schedule			
Name	Req. Net Area	Prototype Area	Difference
<b>Circulation</b>			
Circulation	3999 SF	3589 SF	-410 SF
<b>FA.2</b>			
Bathing	140 SF	140 SF	0 SF
Den	180 SF	180 SF	0 SF
Dining	530 SF	530 SF	0 SF
Foyer	80 SF	85 SF	5 SF
Kitchen	360 SF	360 SF	0 SF
Laundry	135 SF	135 SF	0 SF
Living Room	450 SF	539 SF	89 SF
Seating Alcove	500 SF	624 SF	124 SF
<b>FA.2 - 12 Residential Units</b>			
Resident Room	2835 SF	3169 SF	334 SF
Resident Room A	315 SF	409 SF	94 SF
Resident Room B	630 SF	660 SF	30 SF
<b>FA.3 - Support</b>			
Pantry	95 SF	116 SF	21 SF
Storage	480 SF	486 SF	6 SF
Toilet	60 SF	89 SF	29 SF
Utility/Clean	140 SF	184 SF	44 SF
<b>FA.4</b>			
Home Office	100 SF	108 SF	8 SF
Locker/Lounge	180 SF	180 SF	0 SF
Toilet	60 SF	107 SF	47 SF
CLC Home DGSF	11269 SF	11689 SF	420 SF

Prototype Program Schedule (CLC Neighborhood Services)	
Name	Prototype Area
<b>FA.1</b>	
Neighborhood Services	665 SF
<b>FA.3</b>	
Storage	585 SF
CLC Neighborhood Services DGSF	1250 SF

Areas in Prototype Layout excluded from DGSF:	
Prototype Program Schedule (CLC) - (Building Support)	
Name	Prototype Area
(shown on floor plan)	
Building Support	
Elevator	77 SF
Open Porch	1242 SF
Stair	522 SF
Utility	104 SF
<b>Total Building Support Area</b>	<b>1946 SF</b>



Key Plan with Exterior Dimensions

### Bldg. 30 Tool Dimensions

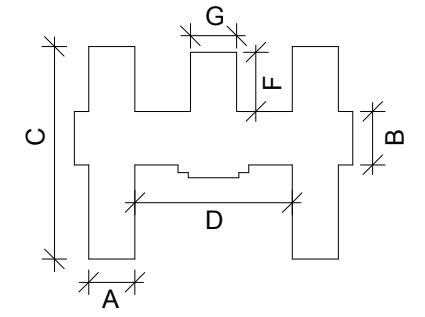
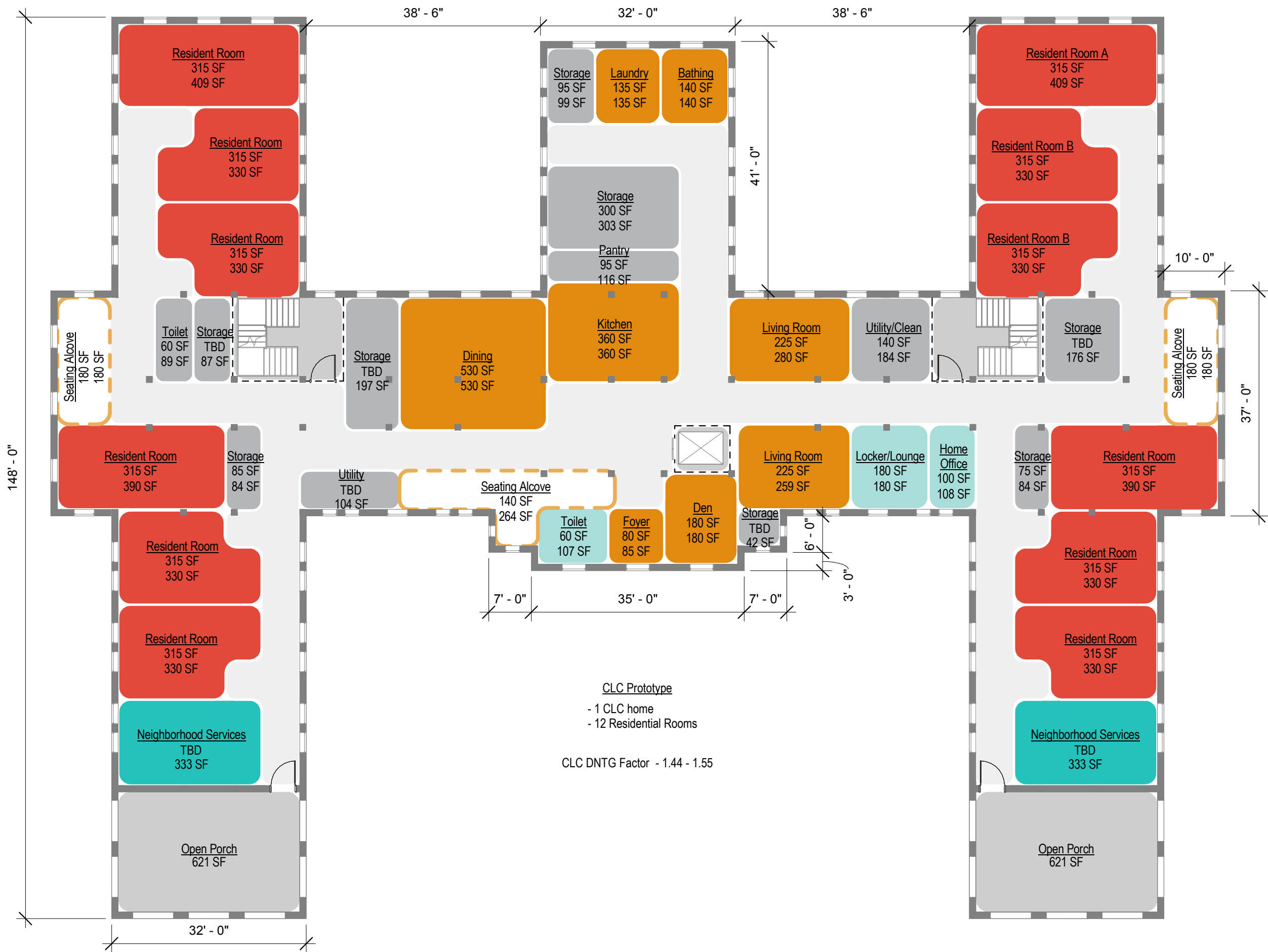
- A : 32' - 0"
- B : 37' - 0"
- C : 148' - 0"
- D : 109' - 0"
- F : 41' - 0"
- G : 32' - 0"

Building 30 - Chillicothe, OH VA  
Medical Center Campus

NIBS/VA HISTORIC  
PRESERVATION REUSE  
INITIATIVE

Community Living Center (CLC)  
Prototype Program

05/03/2017



- Bldg. 30 Tool Dimensions**
- A : 32' - 0"
  - B : 37' - 0"
  - C : 148' - 0"
  - D : 109' - 0"
  - F : 41' - 0"
  - G : 32' - 0"

- STAFF AND ADMINISTRATION AREA
  - RESIDENTIAL HOME AREA
  - SUPPORT AREA
  - NEIGHBORHOOD CENTER SUPPORT AREA
  - EXISTING TO REMAIN
  - NEW VERTICAL CIRCULATION
  - STORAGE/UTILITY
  - CIRCULATION
  - OFFICE SUPPORT
- Office ——— Room Use  
 150 SF ——— Required SF  
 200 SF ——— Shown SF

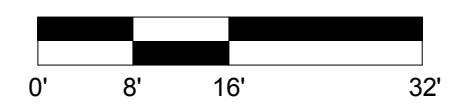
**CLC Prototype**  
 - 1 CLC home  
 - 12 Residential Rooms  
 CLC DNTG Factor - 1.44 - 1.55

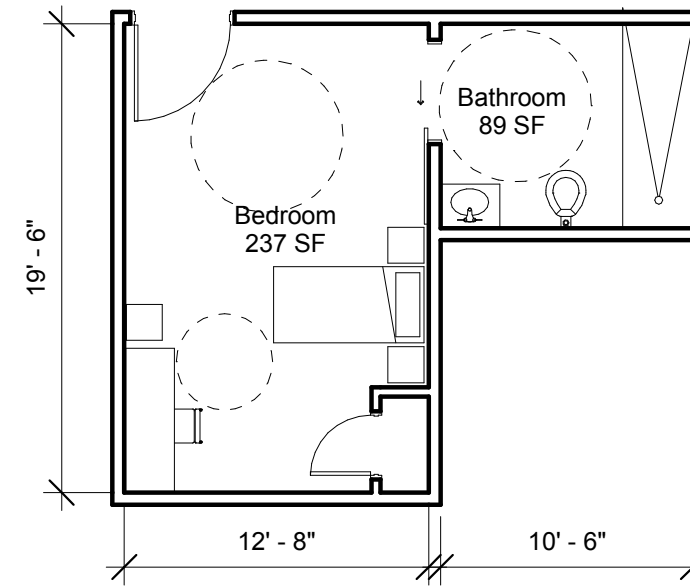
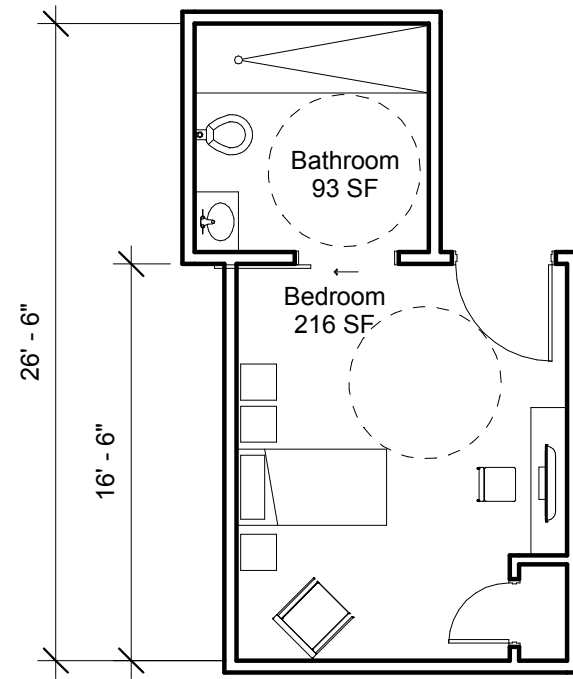
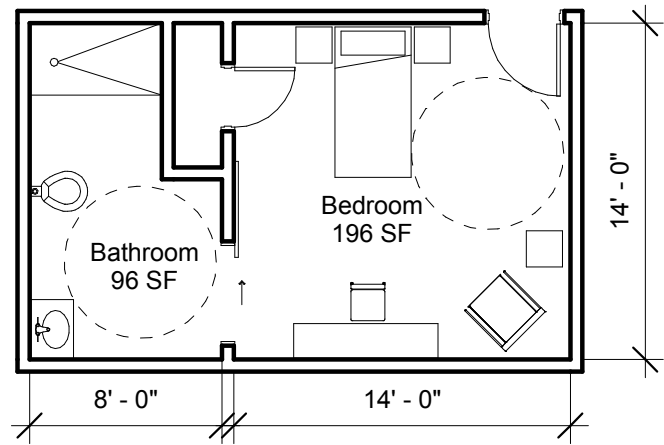
Building 30 - Chillicothe, OH VA  
 Medical Center Campus

NIBS/VA HISTORIC  
 PRESERVATION REUSE  
 INITIATIVE

Community Living Center (CLC)  
 Prototype Floor Plan

05/03/2017

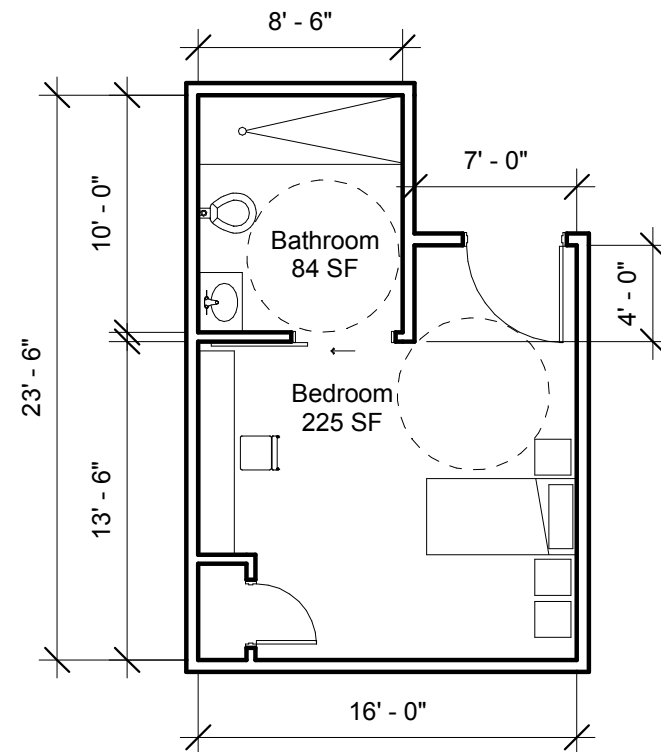
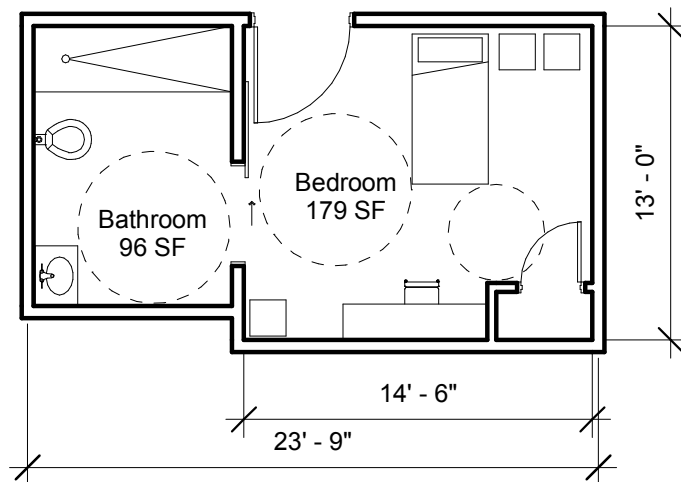




① Resident Room Scheme A - Square  
1/8" = 1'-0"

③ Resident Room Scheme B - Deep  
1/8" = 1'-0"

⑤ Resident Room Scheme C  
1/8" = 1'-0"



② Resident Room Scheme A - Narrow  
1/8" = 1'-0"

④ Resident Room Scheme B - Narrow  
1/8" = 1'-0"

Notes :

1) Room layouts are adaptations of the CLHBD Resident Bedroom and CLHBR Bathroom Floor Plan. They demonstrate different schemes that could fit into existing building wings of varying widths. (Source : 4.0 Design Guide Plates in Community Living Center Design Guide, U.S. Department of Veterans Affairs)

2) See Community Living Center (CLC) Prototype Workflow sheet to see how each scheme aggregates in existing building wing.

Scheme A : Layout for shallow width building or end of building wing  
 Scheme B : Layout for deeper building width, similar to 4.0 Design Guide Plate  
 Scheme C : Layout allows for interlocking aggregation by stacking bathrooms

NIBS/VA HISTORIC  
PRESERVATION REUSE  
INITIATIVE

CLC Resident Room Layout Alternatives

03/01/2017



**GOODYCLANCY**  
ARCHITECTURE / PLANNING / PRESERVATION