

## Tool Workflow Part 2 : Determine Required Program Space for Education Administration

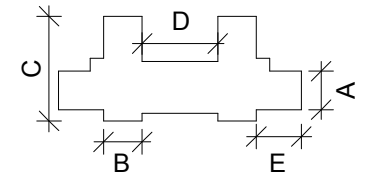
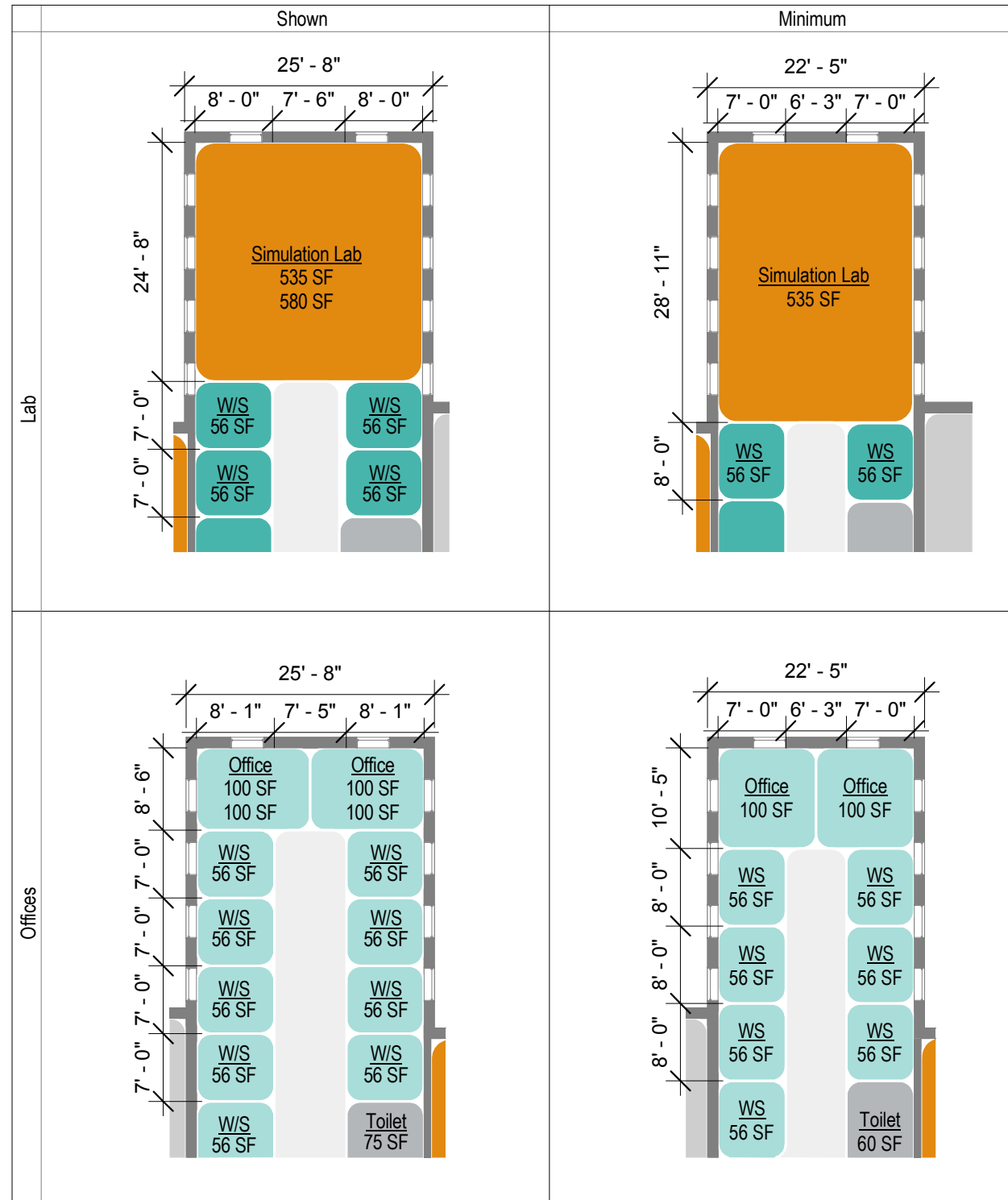
- Determine required DGSF for Education Administration by multiplying DGSF per FTE (See Table 1.1) by required number of FTE (18). (Enter requirements into Tool)
- Check for Education Administration fatal flaws:
  - Minimum 5' corridor width. (Enter min width of corridor into tool.)
- Estimate number of seats that will fit into building. Divide available area by required DGSF/FTE. Use following questions to determine DGSF/FTE in building:
  - Existing Load Bearing Walls? (Add 10% SF/occupant)
  - Other interior partitions to remain? (Add 12% SF/occupant)
- Tool generates number of occupants that can be fit into building. (Tool Output)

Table 1.0 - DGSF in Chillicothe Building 2 - Education Administration Program

DGSF (per level)
5706 SF

Table 1.1 - Education Administration Prototype DGSF per Full-Time Equivalent

per 18 FTE	
Req. DGSF	Shown DGSF
294 SF	317 SF



Key Plan with Exterior Dimensions

Bldg. 2 Tool Dimensions

- A : 25' - 8"
- B : 25' - 8"
- C : 69' - 8"
- D : 50' - 4"
- E : 30' - 0"

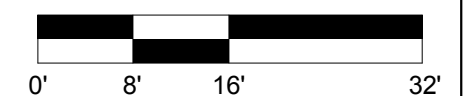
- OFFICE COHORTS
- SUPPORT SPACE
- EXISTING TO REMAIN
- NEW VERTICAL CIRCULATION
- STORAGE/UTILITY
- CIRCULATION
- OFFICE SUPPORT

Building 2 - Chillicothe, OH VA  
Medical Center Campus

NIBS/VA HISTORIC  
PRESERVATION REUSE  
INITIATIVE

Education Administration  
Prototype Workflow

05/03/2017

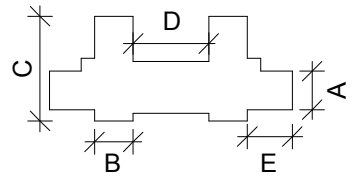


## Prototype Program Schedule

Education Administration Prototype Program Schedule			
Name	Req. Net Area	Prototype Area	Difference
	(from Space Planning Criteria)	(shown on floor plan)	
Circulation	1221 SF	1043 SF	-178 SF
<b>FA.1</b>			
Conference	240 SF	381 SF	141 SF
Locker/Lounge	280 SF	250 SF	-30 SF
Office	200 SF	200 SF	0 SF
Storage	80 SF	53 SF	-27 SF
Support	0 SF	172 SF	172 SF
Toilet	120 SF	135 SF	15 SF
W/S	560 SF	560 SF	0 SF
<b>FA.2</b>			
Office	100 SF	100 SF	0 SF
Storage	100 SF	98 SF	-2 SF
Training	795 SF	860 SF	65 SF
W/S	280 SF	280 SF	0 SF
Waiting	80 SF	144 SF	64 SF
<b>FA.4</b>			
Computer Lab	400 SF	468 SF	68 SF
Conference	300 SF	381 SF	81 SF
Simulation Lab	535 SF	580 SF	45 SF
<b>Total DGSF</b>	<b>5291 SF</b>	<b>5706 SF</b>	<b>415 SF</b>

### Areas in Prototype Layout excluded from DGSF:

Prototype Program Schedule (Education Administration) - (Building Support)	
Name	Prototype Area
	(shown on floor plan)
Building Support	
Elevator	91 SF
Stair	472 SF
Utility	30 SF
<b>Total Building Support Area</b>	<b>593 SF</b>



Key Plan with Exterior Dimensions

#### Bldg. 2 Tool Dimensions

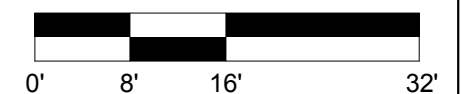
- A : 25' - 8"
- B : 25' - 8"
- C : 69' - 8"
- D : 50' - 4"
- E : 30' - 0"

Building 2 - Chillicothe, OH VA  
Medical Center Campus

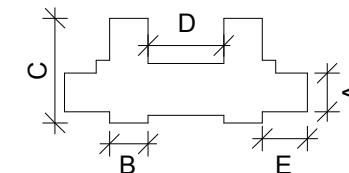
NIBS/VA HISTORIC  
PRESERVATION REUSE  
INITIATIVE

Education Administration  
Prototype Program

05/03/2017



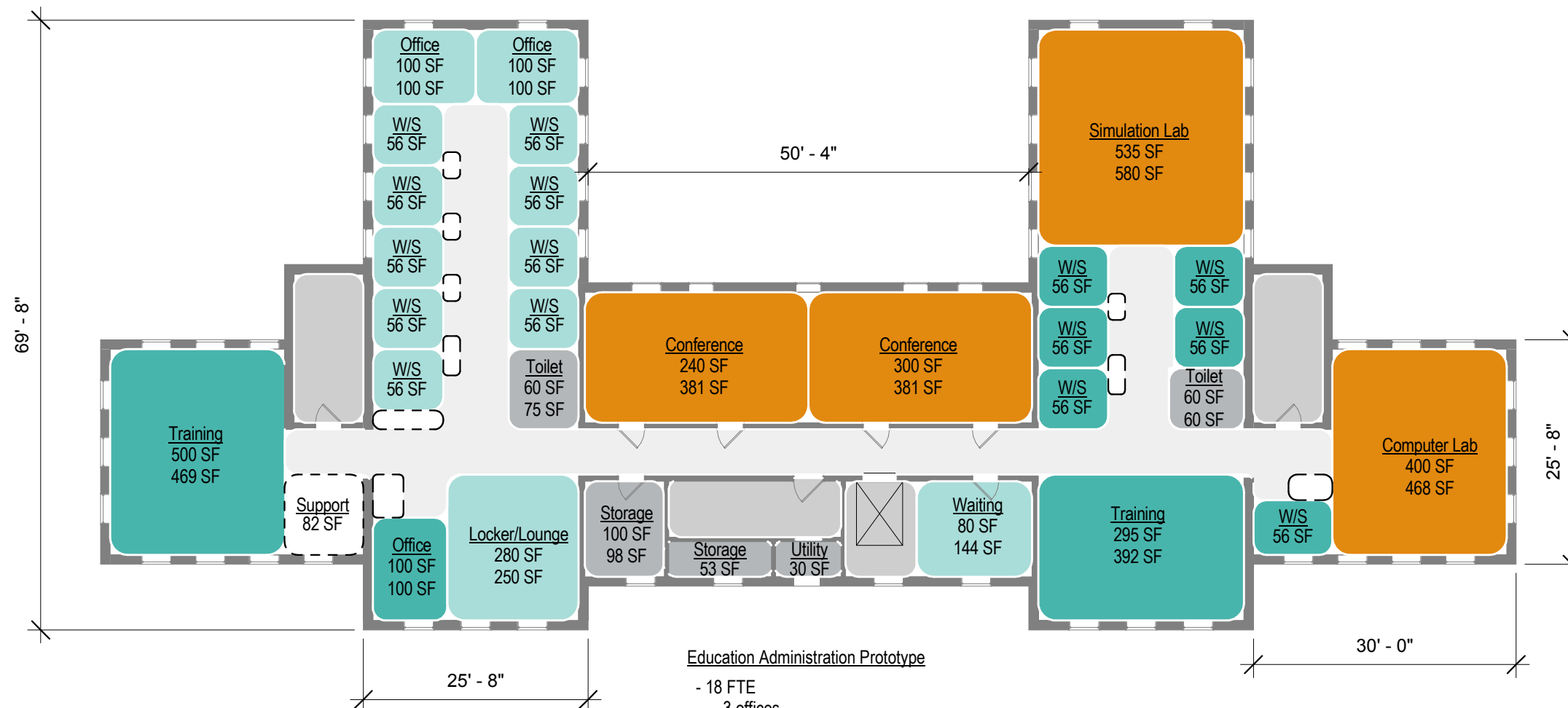
**GOODYCLANCY**  
ARCHITECTURE / PLANNING / PRESERVATION



Key Plan with Exterior Dimensions

Bldg. 2 Tool Dimensions

- A : 25' - 8"
- B : 25' - 8"
- C : 69' - 8"
- D : 50' - 4"
- E : 30' - 0"



**Education Administration Prototype**  
 - 18 FTE  
 - 3 offices  
 - 15 workstations

Education Administration DNTG Factor - 1.22-1.30

- EDUCATION LABORATORY AREA
  - NURSING EDUCATION AND TRAINING AREA
  - STAFF AND ADMINISTRATION AREA
  - EXISTING TO REMAIN
  - NEW VERTICAL CIRCULATION
  - STORAGE/UTILITY
  - CIRCULATION
  - OFFICE SUPPORT
- Office 150 SF — Room Use  
 200 SF — Required SF  
 200 SF — Shown SF

Building 2 - Chillicothe, OH VA Medical Center Campus

NIBS/VA HISTORIC PRESERVATION REUSE INITIATIVE

Education Administration Prototype Program Floor Plan

05/03/2017

