

Tool Workflow Part 2 : Determine Required Program Space for Clinical Services Administration

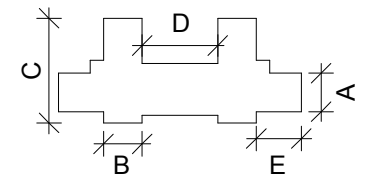
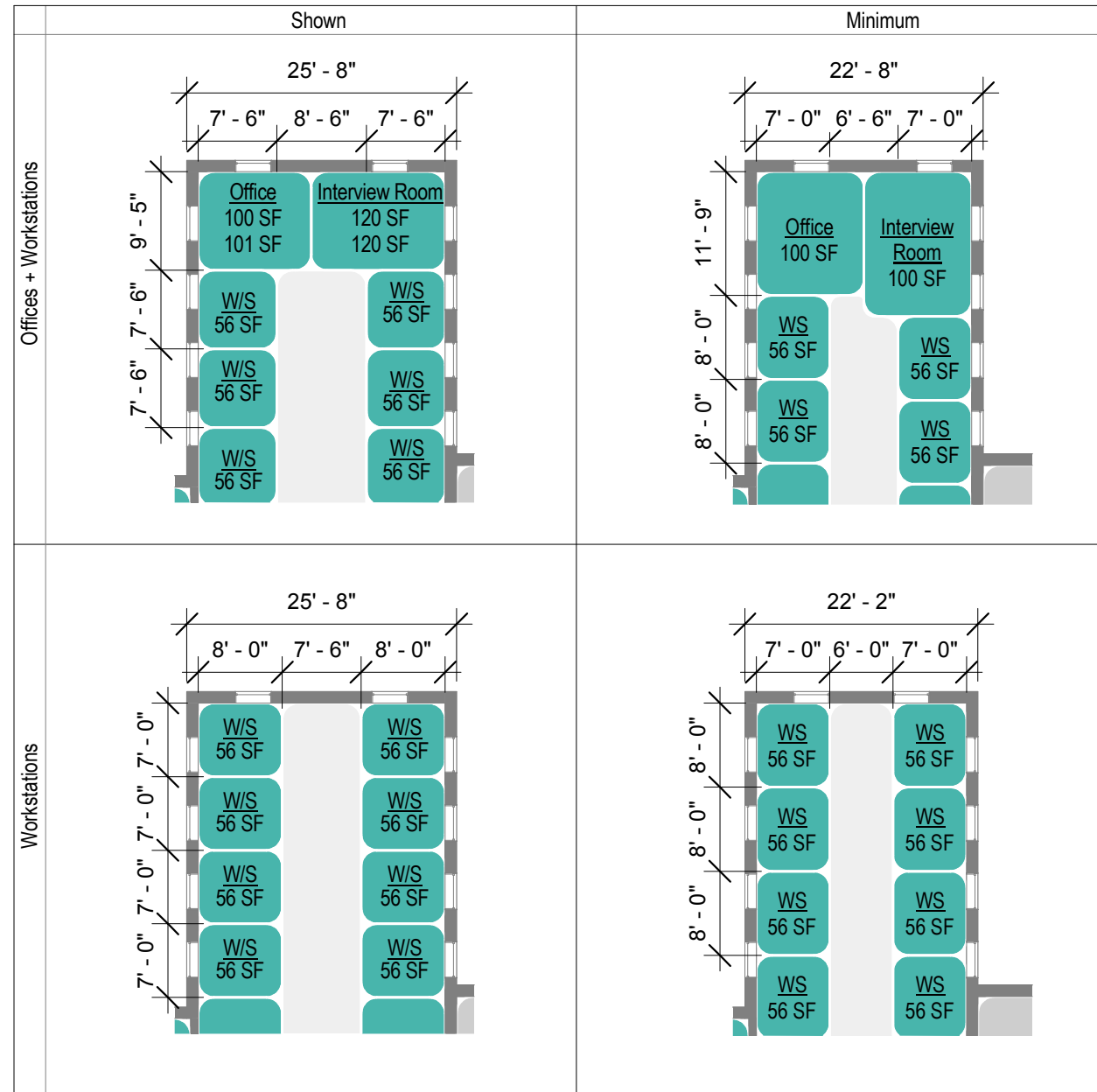
- Determine required DGSF for Clinical Services Administration by multiplying DGSF per FTE (See Table 1.1) by required number of FTE (34). (Enter requirements into Tool)
- Check for Clinical Services Administration fatal flaws:
 - Minimum 5' corridor width. (Enter min width of corridor into tool.)
- Estimate number of seats that will fit into building. Divide available area by required DGSF/FTE. Use following questions to determine DGSF/FTE in building:
 - Existing Load Bearing Walls? (Add 10% SF/occupant)
 - Other interior partitions to remain? (Add 12% SF/occupant)
- Tool generates number of occupants that can be fit into building. (Tool Output)

Table 1.0 - DGSF in Chillicothe Building 2 - Clinical Services Administration Program

DGSF (per level)
5681 SF

Table 1.1 - Clinical Services Administration Prototype DGSF per Full-Time Equivalent

per 34 FTE	
Req. DGSF	Shown DGSF
144 SF	167 SF



Key Plan with Exterior Dimensions

Bldg. 2 Tool Dimensions

- A : 25' - 8"
- B : 25' - 8"
- C : 69' - 8"
- D : 50' - 4"
- E : 30' - 0"

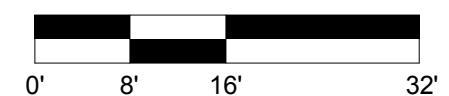
- OFFICE COHORTS
- SUPPORT SPACE
- EXISTING TO REMAIN
- NEW VERTICAL CIRCULATION
- STORAGE/UTILITY
- CIRCULATION
- OFFICE SUPPORT

Building 2 - Chillicothe, OH VA Medical Center Campus

NIBS/VA HISTORIC PRESERVATION REUSE INITIATIVE

Clinical Services Administration Prototype Workflow

05/03/2017

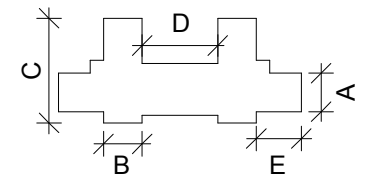


Prototype Program Schedule

Clinical Services Administration Prototype Program Schedule			
Name	Req. Net Area (from Space Planning Criteria)	Prototype Area (shown on floor plan)	Difference
Circulation	1127 SF	1553 SF	426 SF
FA.1			
Conference	600 SF	760 SF	160 SF
Interview Room	480 SF	563 SF	83 SF
Office	800 SF	804 SF	4 SF
Storage	240 SF	235 SF	-5 SF
Support	0 SF	132 SF	132 SF
Toilet	180 SF	180 SF	0 SF
W/S	1456 SF	1453 SF	-3 SF
Total DGSF	4883 SF	5681 SF	798 SF

Areas in Prototype Layout excluded from DGSF:

Clinical Services Schedule (Admin) - (Building Support)	
Name	Prototype Area (shown on floor plan)
Building Support	
Elevator	93 SF
Stair	479 SF
Utility	86 SF
Total Building Support Area	658 SF



Key Plan with Exterior Dimensions

Bldg. 2 Tool Dimensions

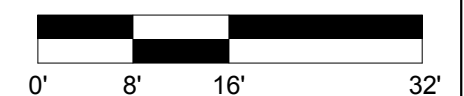
- A : 25' - 8"
- B : 25' - 8"
- C : 69' - 8"
- D : 50' - 4"
- E : 30' - 0"

Building 2 - Chillicothe, OH VA
Medical Center Campus

NIBS/VA HISTORIC
PRESERVATION REUSE
INITIATIVE

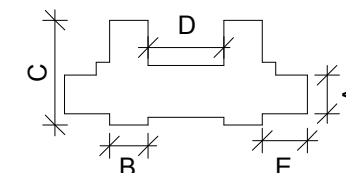
Clinical Services Administration
Prototype Program

05/03/2017



GOODYCLANCY
ARCHITECTURE / PLANNING / PRESERVATION

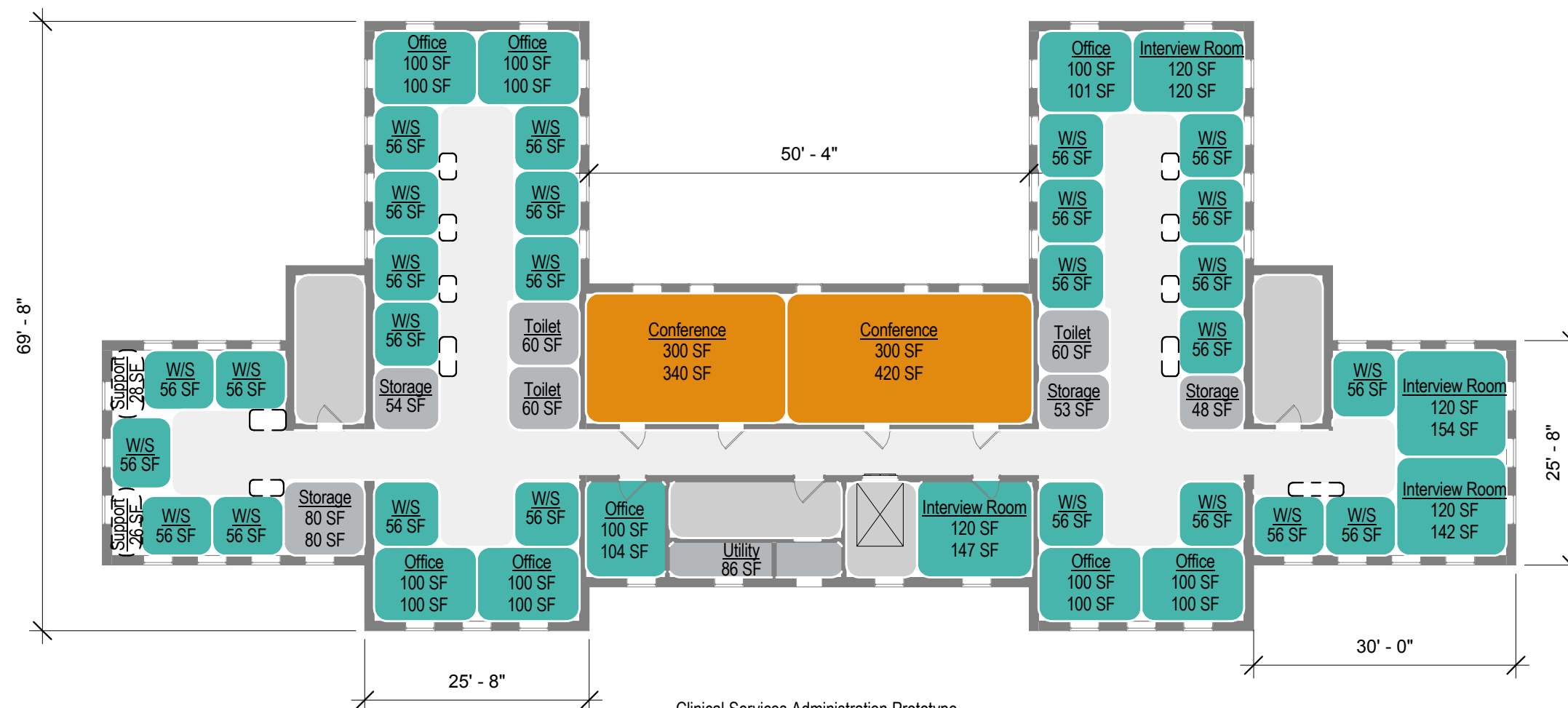
Note : Prototype program developed in collaboration with VA ; January 2017.



Key Plan with Exterior Dimensions

Bldg. 2 Tool Dimensions

- A : 25' - 8"
- B : 25' - 8"
- C : 69' - 8"
- D : 50' - 4"
- E : 30' - 0"



Clinical Services Administration Prototype

- 34 FTE
- 8 offices
- 26 workstations

Clinical Services Administration DNTG Factor - 1.30-1.38

- OFFICE COHORTS
 - SUPPORT SPACE
 - EXISTING TO REMAIN
 - NEW VERTICAL CIRCULATION
 - STORAGE/UTILITY
 - CIRCULATION
 - OFFICE SUPPORT
- Office ——— Room Use
 150 SF ——— Required SF
 200 SF ——— Shown SF

Building 2 - Chillicothe, OH VA Medical Center Campus

NIBS/VA HISTORIC PRESERVATION REUSE INITIATIVE

Clinical Services Administration Prototype Program Floor Plan

05/03/2017

