

Tool Workflow Part 2: Determine Required Program Space for Clinical Services Administration

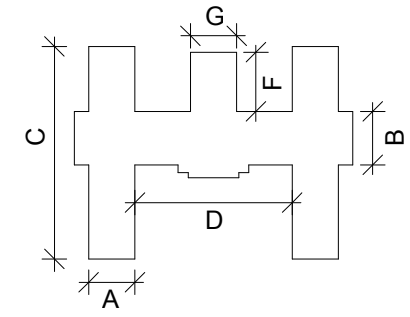
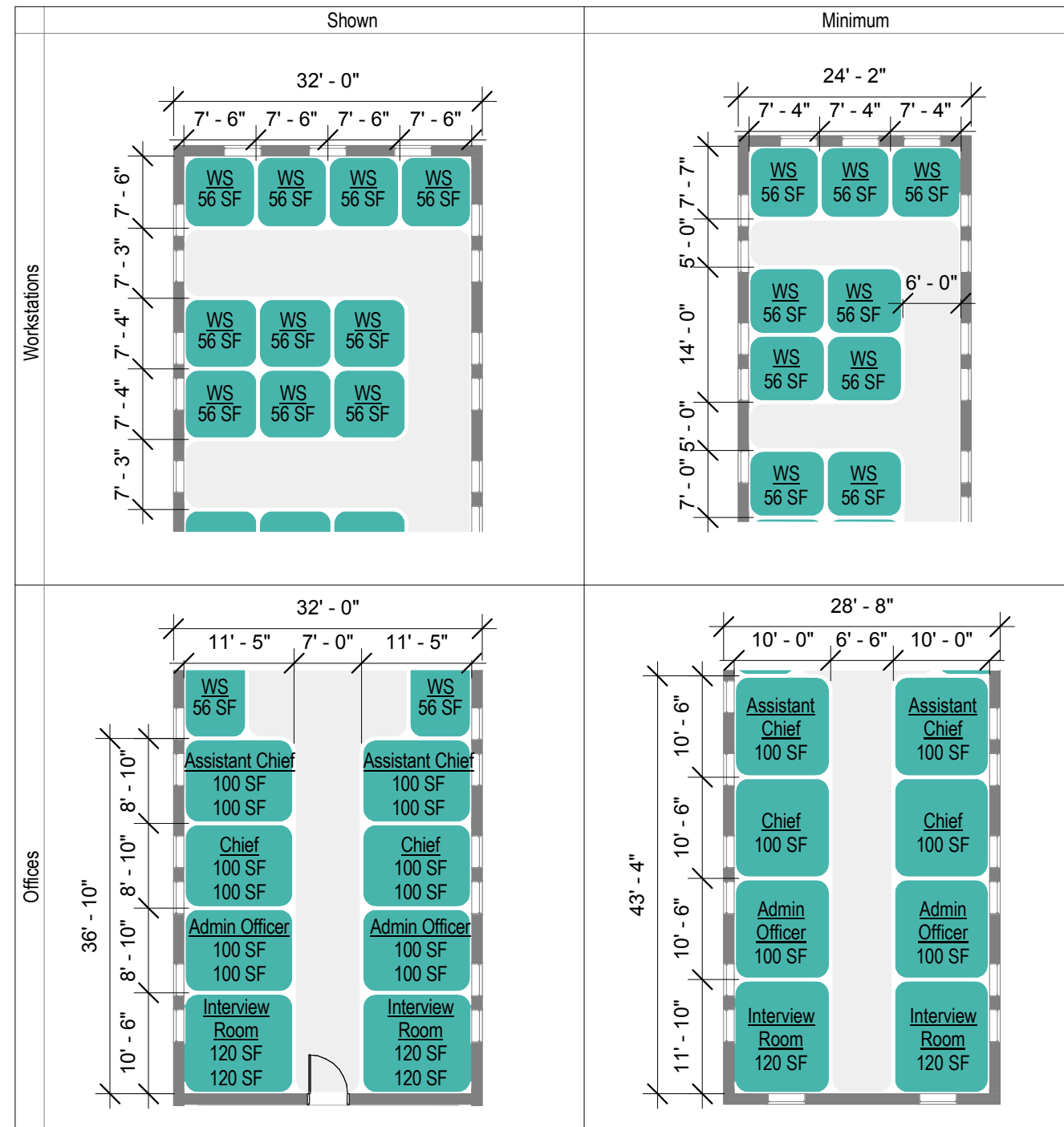
- Determine required DGSF for Clinical Services Administration by multiplying DGSF per FTE (See Table 1.1) by required number of FTE (63). (Enter requirements into Tool)
 - Designer should reference the Space Planning Criteria, Chapter 214, following the functional program.
- Check for Clinical Services Administration fatal flaws:
 - Minimum 5' corridor width. (Enter min width of corridor into tool.)
- Estimate number of seats that will fit into building. Divide available area by required DGSF/FTE. Use following questions to determine DGSF/FTE in building:
 - Existing Load Bearing Walls? (Add 10% SF/occupant)
 - Other interior partitions to remain? (Add 12% SF/occupant)
- Tool generates number of occupants that can be fit into building. (Tool Output)

Table 1.0 - Department Gross Square Footage in Chillicothe Building 30 - Administration Program

DGSF (per level)
12801 SF

Table 1.1 - DGSF per FTE within Admin

per 63 FTE	
Req. DGSF	Shown DGSF
155 SF	203 SF



Key Plan with Exterior Dimensions

Bldg. 30 Tool Dimensions

- A : 32' - 0"
- B : 37' - 0"
- C : 148' - 0"
- D : 109' - 0"
- F : 41' - 0"
- G : 32' - 0"

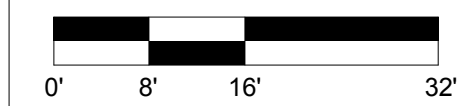
- OFFICE COHORTS
- SUPPORT AREA
- STAFF AND ADMINISTRATION AREA
- EXISTING TO REMAIN
- NEW VERTICAL CIRCULATION
- STORAGE/UTILITY
- CIRCULATION
- OFFICE SUPPORT

Building 30 - Chillicothe, OH VA Medical Center Campus

NIBS/VA HISTORIC PRESERVATION REUSE INITIATIVE

Clinical Services Administration Prototype Workflow

05/03/2017

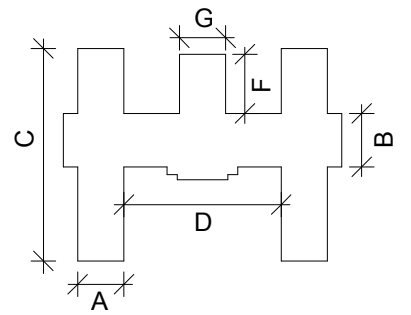


Prototype Program Schedule

Clinical Services Administration Prototype Program Schedule			
Name	Required Net Area (from Space Planning Criteria)	Prototype Area (shown on floor plan)	Difference
Circulation	2258 SF	4092 SF	1835 SF
FA.1			
Admin Officer	600 SF	654 SF	54 SF
Assistant Chief	600 SF	654 SF	54 SF
Chief	600 SF	654 SF	54 SF
Conference	960 SF	1292 SF	332 SF
Interview Room	720 SF	731 SF	11 SF
Locker	240 SF	285 SF	45 SF
Lounge	240 SF	373 SF	133 SF
Reception	85 SF	222 SF	137 SF
Storage	480 SF	480 SF	0 SF
Sup.	0 SF	208 SF	208 SF
Toilet	480 SF	627 SF	147 SF
WS	2520 SF	2530 SF	10 SF
Total DGSF	9783 SF	12801 SF	3018 SF

Areas in Prototype Layout excluded from DGSF:

Prototype Program Schedule (Admin) - (Building Support)	
Name	Prototype Area (shown on floor plan)
Building Support	
Elevator	78 SF
Open Porch	1242 SF
Stair	518 SF
Utility	247 SF
Total Building Support Area	2084 SF



Key Plan with Exterior Dimensions

Bldg. 30 Tool Dimensions

- A : 32' - 0"
- B : 37' - 0"
- C : 148' - 0"
- D : 109' - 0"
- F : 41' - 0"
- G : 32' - 0"

Building 30 - Chillicothe, OH VA
Medical Center Campus

NIBS/VA HISTORIC
PRESERVATION REUSE
INITIATIVE

Clinical Services Administration
Prototype Program

05/03/2017

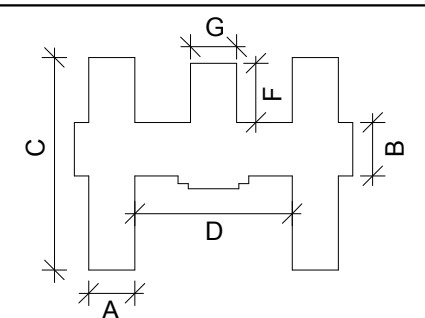
GOODYCLANCY
ARCHITECTURE / PLANNING / PRESERVATION



Clinical Services Administration Prototype

- 63 FTE
- 18 offices
- 45 workstations

Clinical Services Administration DNTG Factor - 1.30 - 1.47



Key Plan with Exterior Dimensions

Bldg. 30 Tool Dimensions

- A : 32' - 0"
- B : 37' - 0"
- C : 148' - 0"
- D : 109' - 0"
- F : 41' - 0"
- G : 32' - 0"

- OFFICE COHORTS
 - SUPPORT AREA
 - STAFF AND ADMINISTRATION AREA
 - EXISTING TO REMAIN
 - NEW VERTICAL CIRCULATION
 - STORAGE/UTILITY
 - CIRCULATION
 - OFFICE SUPPORT
- Office ——— Room Use
 150 SF ——— Required SF
 200 SF ——— Shown SF

Building 30 - Chillicothe, OH VA
 Medical Center Campus

NIBS/VA HISTORIC
 PRESERVATION REUSE
 INITIATIVE

Clinical Services Administration
 Prototype Floor Plan

05/03/2017

