

TREY3 - INTERIOR DESIGN

Floor Finish		Wall Finish		Ceiling Finish		Room Height	Room Noise		
Preferred	Alternate	Preferred	Alternate	Preferred	Alternate	ft - in	Min NC	Max NC	SC
VT	SV	GPT	GPT	GLG	AT2	8' - 0"	30	35	40

TREY3 - DOOR SCHEDULE

Mark	Type	Count	Height	Width	Notes
			ft - in	ft - in	
A	Single-Flush	1	7' - 0"	3' - 0"	

Room Description: TX Room PRK / LASIK

NSF: 240

TREY3

Plate Description: Room/Equipment Isometric

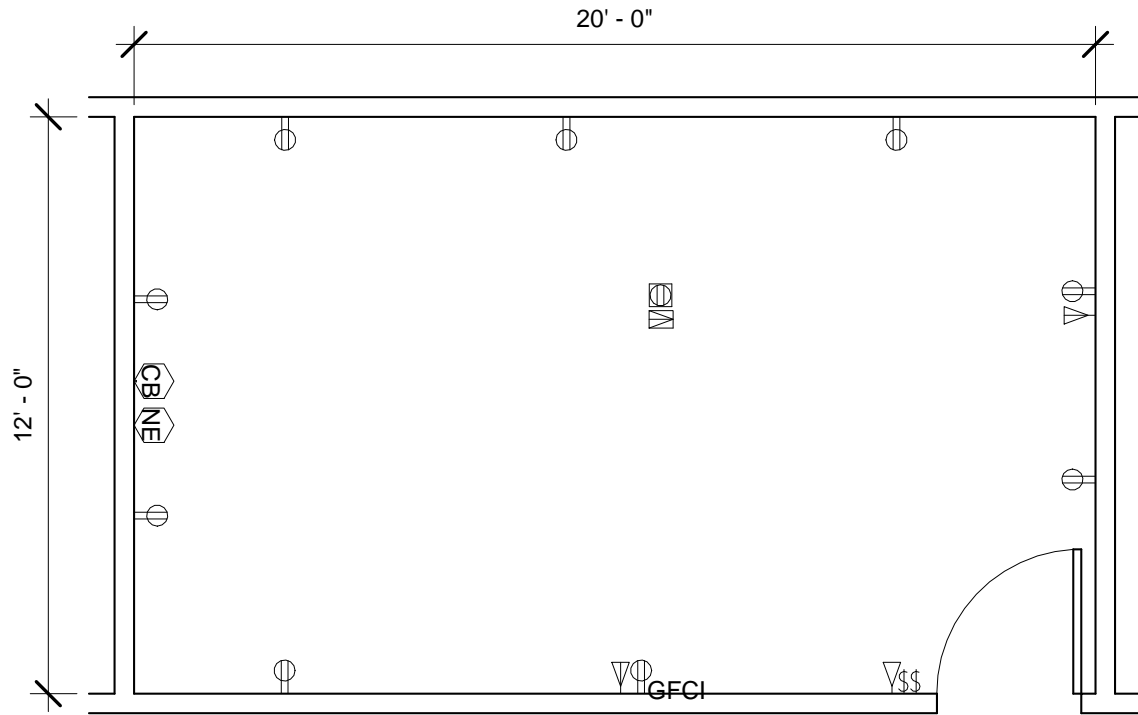
Scale:

Sheet

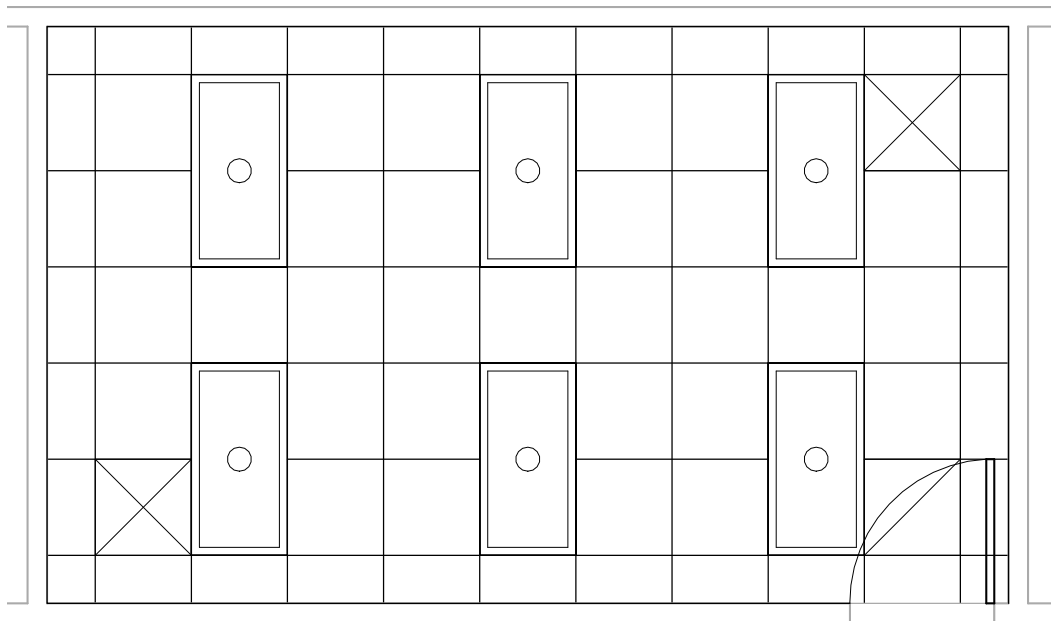
1

of

5

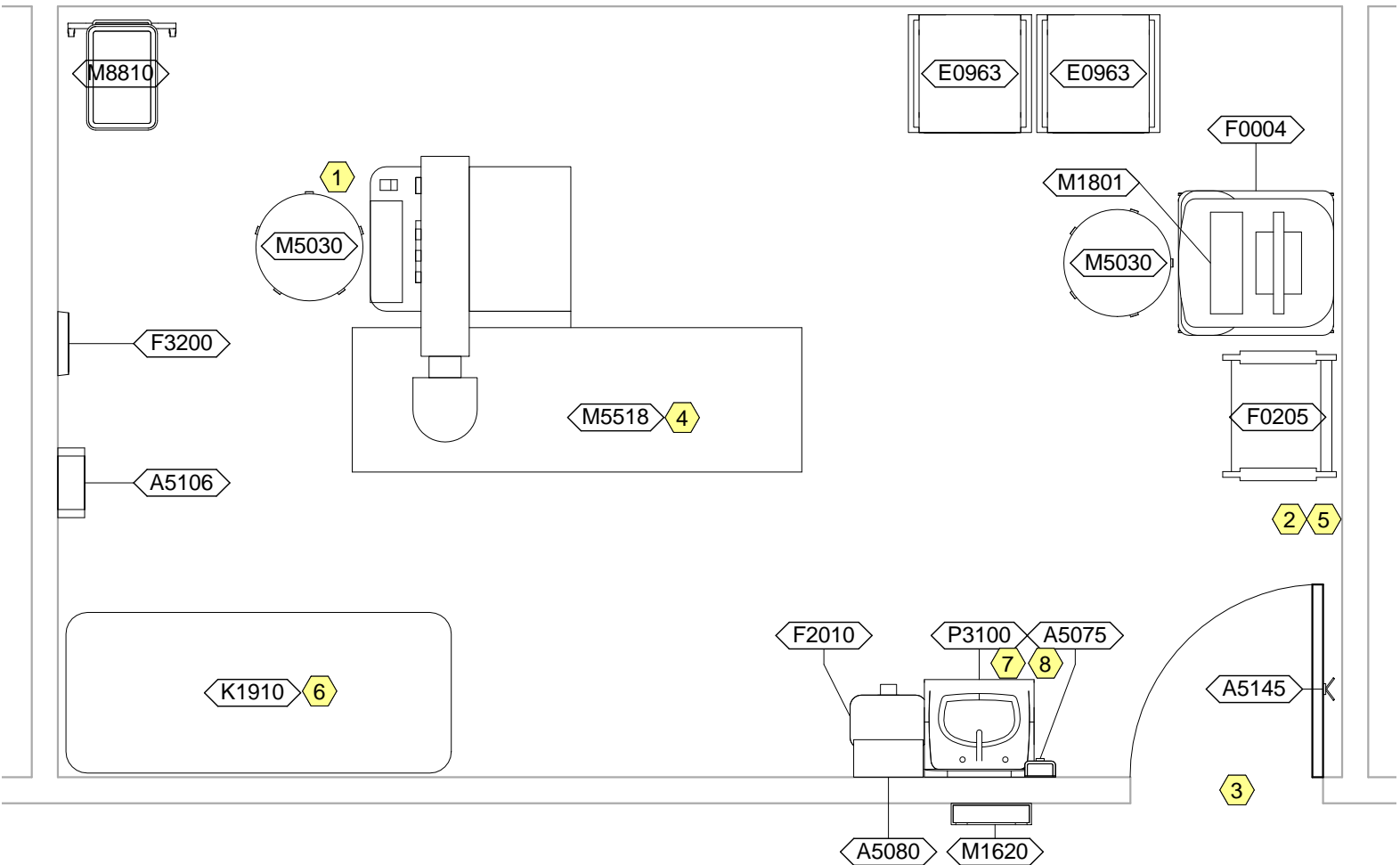


TREY3 - FLOOR PLAN



TREY3 - CEILING PLAN

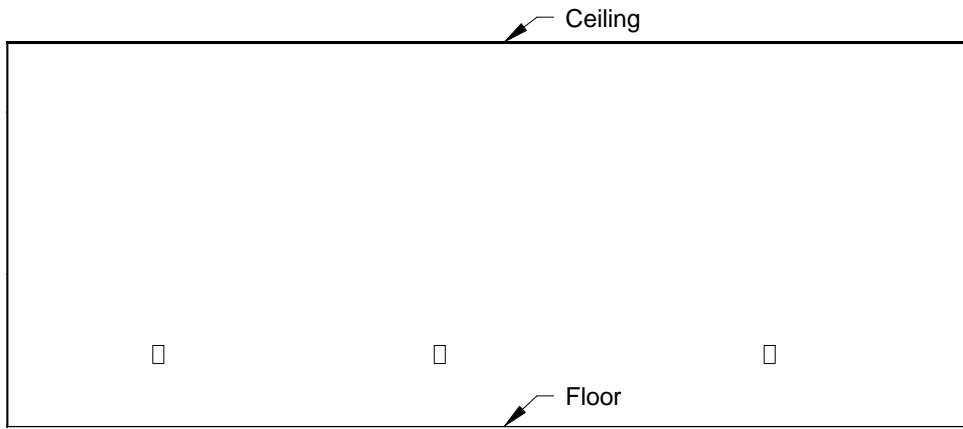
Room Description: TX Room PRK / LASIK	NSF: 240	<h1>TREY3</h1>	
Plate Description: Floor & Ceiling Plans	Scale: 1/4" = 1'-0"	Sheet <h2>2</h2>	of <h2>5</h2>



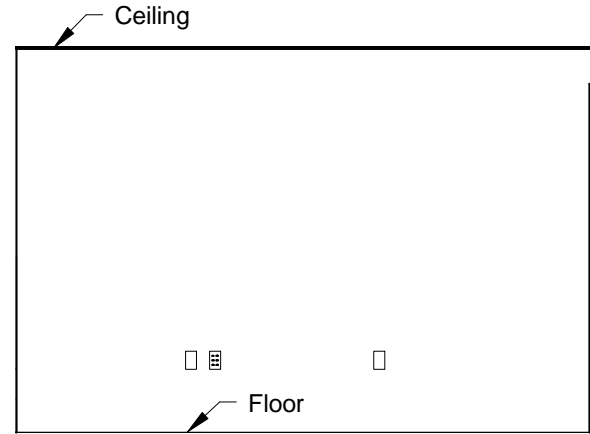
TREY3 - NOTES

- 1 A local or remote second monitor is optional.
- 2 Room Air Purifier
- 3 Provide cipher lock for door.
- 4 A reclining chair may be used instead of a bed.
- 5 Visual temperature and humidity gauges. Sensors and visual gauges may be combined in a single unit. Mount top of gauges at 4'-6" A.F.F.
- 6 JSN K1910, Table, Work, Stainless Steel, shown as 72"W x 24"D, shall include casters.
- 7 JSN P3200, Lavatory Electronic, may be used instead of JSN P3100, Lavatory. For the JSN P3200, Lavatory Electronic, provide either battery power or hard wired connection.
- 8 JSN P8710, Utility Center, shall be included in Navy projects only.

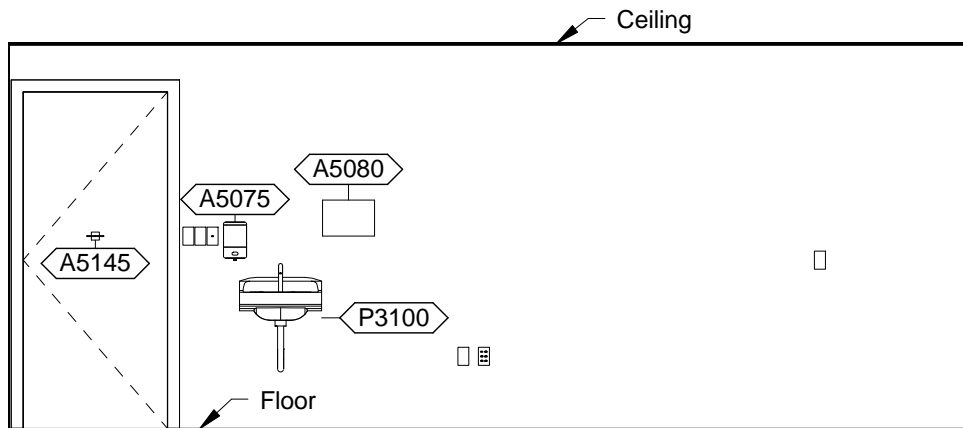
Room Description: TX Room PRK / LASIK	NSF: 240	<h1>TREY3</h1>	
Plate Description: Equipment Plan	Scale: 3/8" = 1'-0"	Sheet <h2>3</h2>	of <h2>5</h2>



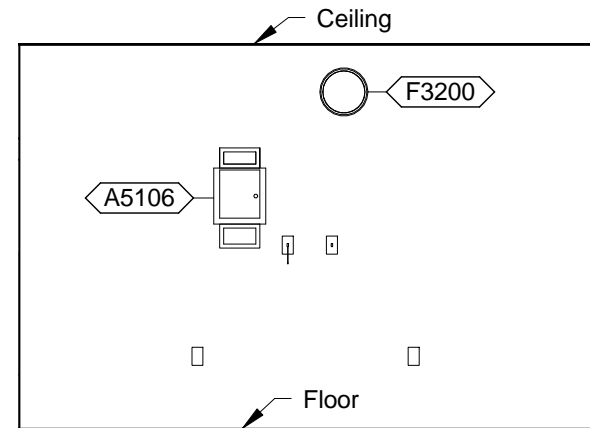
TREY3 - PLAN NORTH



TREY3 - PLAN EAST



TREY3 - PLAN SOUTH



TREY3 - PLAN WEST

Room Description: TX Room PRK / LASIK	NSF: 240	<h1>TREY3</h1>	
Plate Description: Interior Room Elevations	Scale: 1/4" = 1'-0"	Sheet <h2>4</h2>	of <h2>5</h2>

TREY3 - EQUIPMENT SCHEDULE

JSN	Nomenclature	Qty	Logistics				Utilities					
			AR	NA	AF	VA	1	2	3	4	5	6
A5075	Dispenser, Soap, Disposable	1	C	C	C	C	-	-	-	-	-	-
A5080	Dispenser, Paper Towel, SS, Surface Mounted	1	A	A	A	A	-	-	-	-	-	-
A5106	Waste Disposal Unit, Sharps w/Glove Dispenser	1	C	A	C	C	-	-	-	-	-	-
A5145	Hook, Garment, Double, SS, Surface Mounted	1	A	A	A	A	-	-	-	-	-	-
E0963	Cart, General Storage, Mobile	2	C	C	C	C	-	-	-	-	-	-
F0004	Mobile, Workstation	1	C	C	C	C	-	-	-	-	-	-
F0205	Chair, Side With Arms	1	C	C	C	C	-	-	-	-	-	-
F2010	Basket, Wastepaper, Step-On	1	C	C	C	C	-	-	-	-	-	-
F3200	Clock, Battery, 12" Diameter	1	C	C	C	C	-	-	-	-	-	-
K1910	Table, Work, Stainless Steel	1	A	A	A	A	-	-	-	-	-	-
M1620	Holder, Chart, Patient, Wall or Door Mounted	1	A	A	A	A	-	-	-	-	-	-
M1801	Computer, Microprocessing, w/Flat Panel Monitor	1	C	C	C	C	-	A	-	-	-	-
M5030	Stool, Surgeon, Revolving	2	C	C	C	C	-	-	-	-	-	-
M5518	Laser, Corneal Surgery	1	C	C	C	C	-	F	-	-	-	-
M8810	Stand, Mayo	1	C	C	C	C	-	-	-	-	-	-
P3100	Lavatory, Vitreous China, Slab Type	1	A	A	A	A	D	-	-	-	-	-

TREY3 - DATA/TELEPHONE EQUIPMENT

JSN	Nomenclature	Qty	Logistics			
			AR	NA	AF	VA
A1010	Telecommunication Outlet	3	A	A	A	A
A1014	Telephone, Wall Mounted, 1 Line, with Speaker	1	A	A	A	A

Room Description: TX Room PRK / LASIK	NSF: 240	TREY3	
Plate Description: Equipment Schedule	Scale:	Sheet 5	of 5