

KEY NOTES

1. MOUNT A5145, HOOK, AT 1372 [4'-6"] AFF.
2. MOUNT A5145, HOOK, AT 1372 [4'-6"] AFF. PROVIDE 2-A5145'S FOR NAVY PROJECTS ONLY.
MOUNT 1-A5145 AT 1372 [4'-6"] AFF AND 1-A5145 AT 1524 [5'-0"] AFF.
3. COORDINATE LOCATION OF M1620, PATIENT CHART HOLDER, AND ROOM SIGNAGE.
4. LENGTH OF E1500, WALL MOUNTED RAIL, TO BE DETERMINED BY MANUFACTURER/INSTALLER.
5. P3200, ELECTRONIC LAVATORY, MAY BE USED INSTEAD OF P3100, LAVATORY. FOR THE P3200 PROVIDE EITHER BATTERY POWER OR HARD WIRED CONNECTION.
6. UTILITIES AND DEVICES INDICATED ARE FOR A CLINIC OR HOSPITAL WITH AN ALTERNATE POWER SOURCE.

OUTPATIENT TREADMILL ROOM (OPTM1)

CARDIOLOGY/PULMONARY SERVICES

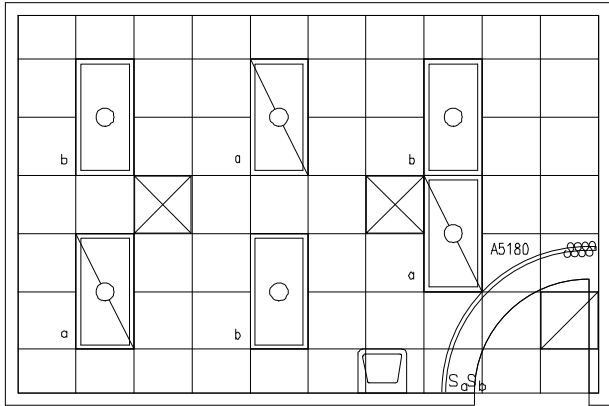
0 1000 2000

FLOOR/EQUIPMENT PLAN 24.16 NSM (260 NSF)



DATE: 01/28/2002

1:50 SCALE (MILLIMETERS)



OUTPATIENT TREADMILL ROOM (OPTM1)

CARDIOLOGY/PULMONARY SERVICES

0 1000 2000

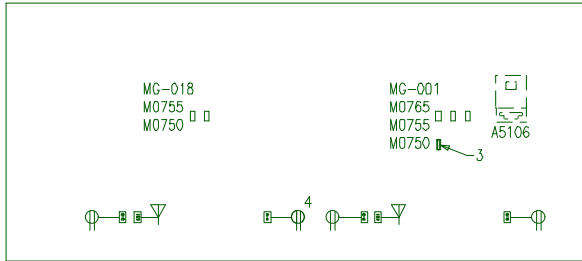
CEILING PLAN

24.16 NSM (260 NSF)

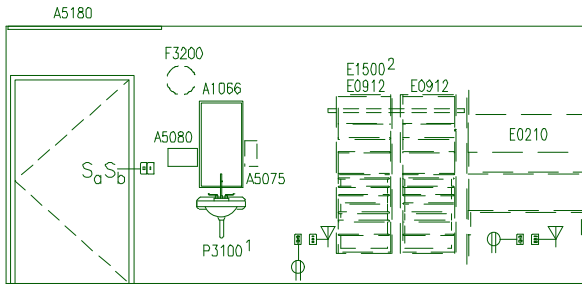


DATE: 01/28/2002

1:50 SCALE (MILLIMETERS)



NORTH



SOUTH

KEY NOTES

1. P3200, ELECTRONIC LAVATORY, MAY BE USED INSTEAD OF P3100, LAVATORY. FOR THE P3200 PROVIDE EITHER BATTERY POWER OR HARD WIRED CONNECTION.
2. LENGTH OF E1500, WALL MOUNTED RAIL, TO BE DETERMINED BY MANUFACTURER/INSTALLER.
3. VACUUM SLIDE.
4. UTILITIES AND DEVICES INDICATED ARE FOR A CLINIC OR HOSPITAL WITH AN ALTERNATE POWER SOURCE.

General Notes:

1. For typical equipment mounting heights see "TYPICAL EQUIPMENT MOUNTING HEIGHTS" drawing.
2. MIL-STD-1691 data can only be accessed from the Equipment Plan.

OUTPATIENT TREADMILL ROOM (OPTM1)

CARDIOLOGY/PULMONARY SERVICES

0 1000 2000

ELEVATIONS

24.16 NSM (260 NSF)

DATE: 01/28/2002

1:50 SCALE (MILLIMETERS)

Project Rooms (User Contents Only)

As of 08/18/2005

Page 1

Room Code: OPTM1 Room Qty: 1 Room Area: 260.03 Room Description: OUTPATIENT TREADMILL ROOM

JSN	NOMENCLATURE	Qty	UNIT	LOG	Utl	Utl	Utl	Utl	Utl	Utl
			ISSUE	CAT	1	2	3	4	5	6

Equipment per Room:

A1066	Mirror, Float Glass, With SS Frame, 36X18	1	EA	A
A5075	Dispenser, Soap, Disposable	1	EA	C
A5080	Dispenser, Paper Towel, SS, Surface Mounted	1	EA	A
A5106	Waste Disposal Unit, Sharps w/Glove Dispenser	1	EA	C
A5145	Hook, Garment, Double, SS, Surface Mounted	2	EA	A
A5180	Track, Cubicle, Surface Mounted, With Curtain	1	FT	A
E0210	Worksurface, w/Overhead Cab, Wall Mtd, 48" W	1	EA	C	.	A
E0912	Locker, Supply, Med Surg, Wall Mtd	2	EA	C
E0954	Cart, Emergency, Mobile, 66"H x 52"W x 22"D	1	EA	C
E1500	Rail, MOD, W/MNTD, HX144XD	1	EA	C
F0205	Chair, Side With Arms	1	EA	C
F0280	Chair, Swivel, Low Back	1	EA	C
F0340	Stool, Self Adjusting	1	EA	C
F2000	Basket, Wastepaper, Round, Metal, 18 H x 16 Dia.	2	EA	C
F3200	Clock, Battery, 12" Diameter	1	EA	C
M0750	Flowmeter, Air, Connect w/50 PSI Supply	2	EA	C	.	.	K	.	.	.
M0755	Flowmeter, Oxygen, Low Flow	2	EA	C	.	.	A	.	.	.
M0765	Regulator, Vacuum	1	EA	C	.	.	B	.	.	.
M1620	Holder, Chart, Patient, Wall or Door Mounted	1	EA	A
M1800	Computer, Microprocessing, w/CRT Monitor	1	EA	C	.	A
M1825	Printer, Computer	1	EA	C	.	A
M3070	Hamper, Linen, Mobile, w/Lid	1	EA	C
M4040	Scale, Weighing, 300 Pound Capacity	1	EA	C
M4116	Monitor, Vital Signs	1	EA	C	.	A
M4255	Stand, IV, Adjustable	1	EA	C
M4266	Pump, Volumetric, Infusion, Multiple Line	1	EA	C	.	A
M4665	Stretcher, Recovery, Surgical	1	EA	C
M7660	Defibrillator/Monitor/Recorder, Portable	1	EA	C	.	A
M7710	Electrocardiograph, 12 Lead, Portable	1	EA	C	.	A
M8133	Ergometer, Upper Body	1	EA	C	.	A
M8185	System, Stress Exercise, w/Treadmill	1	EA	C	.	B
P3100	Lavatory, Vitreous China, Slab Type	1	EA	A	D

=====

GRAND TOTAL

37