

NOTES

1. PROVIDE EMERGENCY LIGHTING FOR HOSPITALS.

KEY NOTES

2. COORDINATE LOCATION OF M1620, PATIENT CHART HOLDER, AND ROOM SIGNAGE.
3. MOUNT A5150, HOOK, AT 1372 [4'-6"] AFF.
4. PROVIDE SPECIFICATION GRADE "HEAVY DUTY" RECEPTACLES.

OUTPATIENT CAST ROOM-2 STATION (OPCR2)

ORTHOPEDICS/PODIATRY

FLOOR/EQUIPMENT PLAN

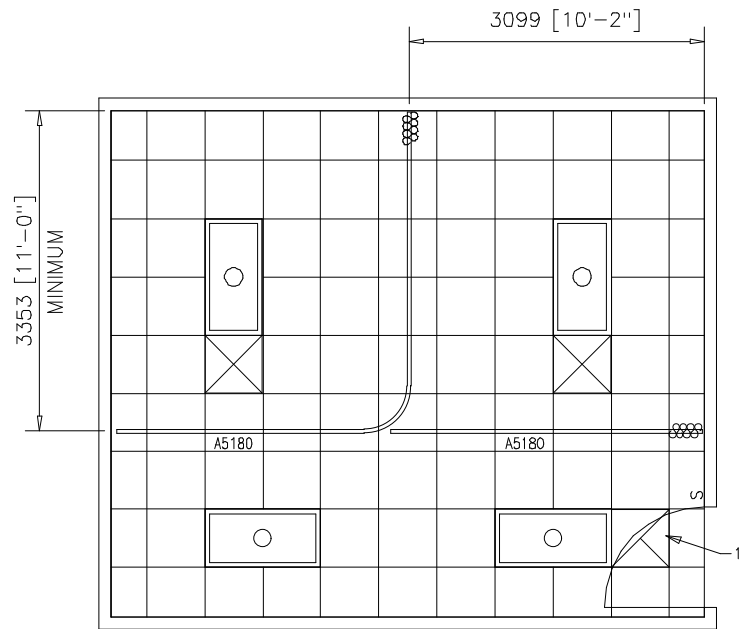
DATE: 07/12/2001

33.06 NSM (356 NSF)

0 1000 2000



1:50 SCALE (MILLIMETERS)



NOTES

- 1. PROVIDE EMERGENCY LIGHTING FOR HOSPITALS.

KEY NOTES

- 1. PROVIDE FILTER BACK GRILLE.

OUTPATIENT CAST ROOM-2 STATION (OPCR2)

ORTHOPEDICS/PODIATRY

CEILING PLAN

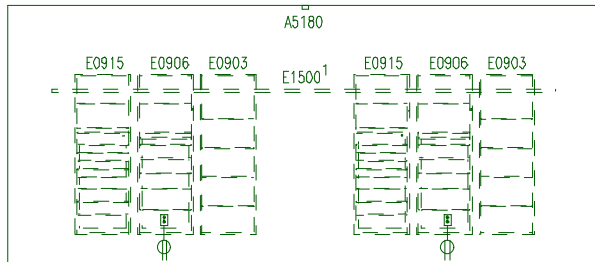
DATE: 07/12/2001

33.06 NSM (356 NSF)

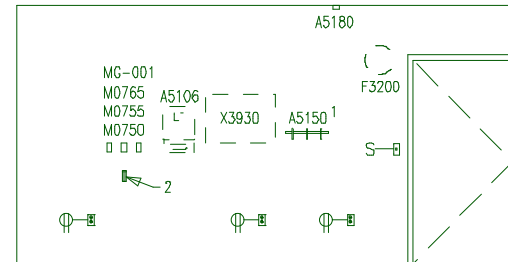
0 1000 2000



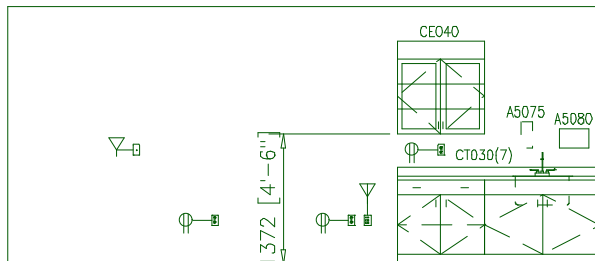
1:50 SCALE (MILLIMETERS)



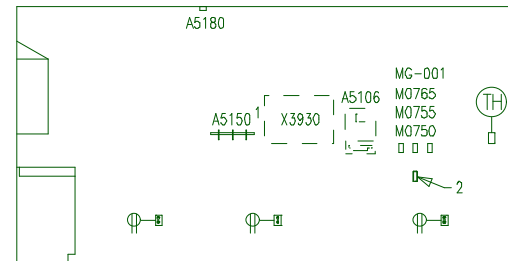
NORTH



EAST



SOUTH



WEST

KEY NOTES

1. LENGTH OF E1500, WALL MOUNTED RAIL, TO BE DETERMINED BY MANUFACTURER/INSTALLER.

General Notes:

1. For typical equipment mounting heights see "TYPICAL EQUIPMENT MOUNTING HEIGHTS" drawing.
2. MIL-STD-1691 data can only be accessed from the Equipment Plan.

KEY NOTES

1. MOUNT A5150, HOOK, AT 1372 [4'-6"] AFF.
2. VACUUM SLIDE.

OUTPATIENT CAST ROOM-2 STATION (OPCR2)

ORTHOPEDICS/PODIATRY

ELEVATIONS

33.06 NSM (356 NSF)

0 1000 2000



DATE: 07/12/2001

1:50 SCALE (MILLIMETERS)

Room Code: OPCR2 Room Qty: 1 Room Area: 355.79 Room Description: OUTPATIENT CAST ROOM - 2 STATION

JSN	NOMENCLATURE	Qty	UNIT	LOG	Utl	Utl	Utl	Utl	Utl	Utl
			ISSUE	CAT	1	2	3	4	5	6

Equipment per Room:

A5075	Dispenser, Soap, Disposable	1	EA	C	.	.	.	.	.	.
A5080	Dispenser, Paper Towel, SS, Surface Mounted	1	EA	A	.	.	.	.	.	.
A5106	Waste Disposal Unit, Sharps w/Glove Dispenser	2	EA	C	.	.	.	.	.	.
A5150	Hook, Garment, Triple, Surface Mounted	2	EA	A	.	.	.	.	.	.
A5180	Track, Cubicle, Surface Mounted, With Curtain	2	FT	A	.	.	.	.	.	.
C04E0	Cabinet, U/C/B, 1 Shelf, 1 Drawer, 2 DO, 36x36x2	1	EA	A	.	.	.	.	.	.
C05P0	Cabinet, Sink, U/C/B, 2 Door, 36x48x22	1	EA	A	.	.	.	.	.	.
CE090	Cabinet, W/H, 2 SH, 2 GDO, Sloping Top, 41x36x16	1	EA	A	.	.	.	.	.	.
CS180	Sink, SS, Single Compartment, 12x22x16 ID	1	EA	A	D	.	.	.	.	.
CT030	Countertop, High Pressure Laminate	7	LF	A	.	.	.	.	.	.
E0903	Locker, Supply, w/Shelves, Wall Mtd, 23"W x 20"D	2	EA	C	.	.	.	.	.	.
E0906	Locker, Supply, General, Wall Mtd, 23"W x 20"D	2	EA	C	.	.	.	.	.	.
E0915	Locker, Supply, Medication, Wall Mtd, 23"W x 20"	2	EA	C	.	.	.	.	.	.
E0942	Cart, Cast, Mobile, 36"H x 54"W x 22"D	2	EA	C	.	.	.	.	.	.
E0945	Cart, Computer, Mobile, 48"H x 54"W x 22"D	1	EA	C	.	.	.	.	.	.
E1500	Rail, MOD, W/MNTD, HX144XD	2	EA	C	.	.	.	.	.	.
F0230	Chair, Drafting, Rotary	1	EA	C	.	.	.	.	.	.
F0340	Stool, Self Adjusting	2	EA	C	.	.	.	.	.	.
F2000	Basket, Wastepaper, Round, Metal, 18 H x 16 Dia.	1	EA	C	.	.	.	.	.	.
F2020	Can, Trash, 44 Gallon	1	EA	C	.	.	.	.	.	.
F3200	Clock, Battery, 12" Diameter	1	EA	C	.	.	.	.	.	.
M0750	Flowmeter, Air, Connect w/50 PSI Supply	2	EA	C	.	.	K	.	.	.
M0755	Flowmeter, Oxygen, Low Flow	2	EA	C	.	.	A	.	.	.
M0765	Regulator, Vacuum	2	EA	C	.	.	B	.	.	.
M1620	Holder, Chart, Patient, Wall or Door Mounted	1	EA	A	.	.	.	.	.	.
M3070	Hamper, Linen, Mobile, w/Lid	2	EA	C	.	.	.	.	.	.
M3072	Frame, Infectious Waste Bag w/Lid	2	EA	C	.	.	.	.	.	.
M4255	Stand, IV, Adjustable	1	EA	C	.	.	.	.	.	.
M4835	Cutter, Cast, w/Vacuum	2	EA	C	.	A	.	.	.	.
M7420	Light, Exam, Mobile	1	EA	C	.	A	.	.	.	.
M8810	Stand, Mayo	2	EA	C	.	.	.	.	.	.
M9055	Table, Exam, Orthopedic	2	EA	C	.	.	.	.	.	.
P7650	Trap, Plaster, Small	1	EA	A	I	.	.	.	.	.
X3930	Illuminator, Film, Double, Wall Mounted, 20x29x6	2	EA	C	.	A	.	.	.	.
X4112	Console, PACS, Remote View, 1k X 1k, 2 Monitors	1	EA	F	.	B	.	.	.	.

\*\*\*\*\*  
59

\*\*\*GRAND TOTAL\*\*\*