

NOTES

1. FOR CABINETS AT FINISHED WALL, SEE PLATE 3.20.03

KEY NOTES

- 1. X-RAY REMOTE CONTROL W/CORDED SWITCH
- 2. EMPTY 3/4" CONDUIT TO D7090

**DENTAL TREATMENT ROOM,
OPEN BAY(Z0012)**

3.20.04

DENTAL CLINIC

FLOOR/EQUIPMENT PLAN

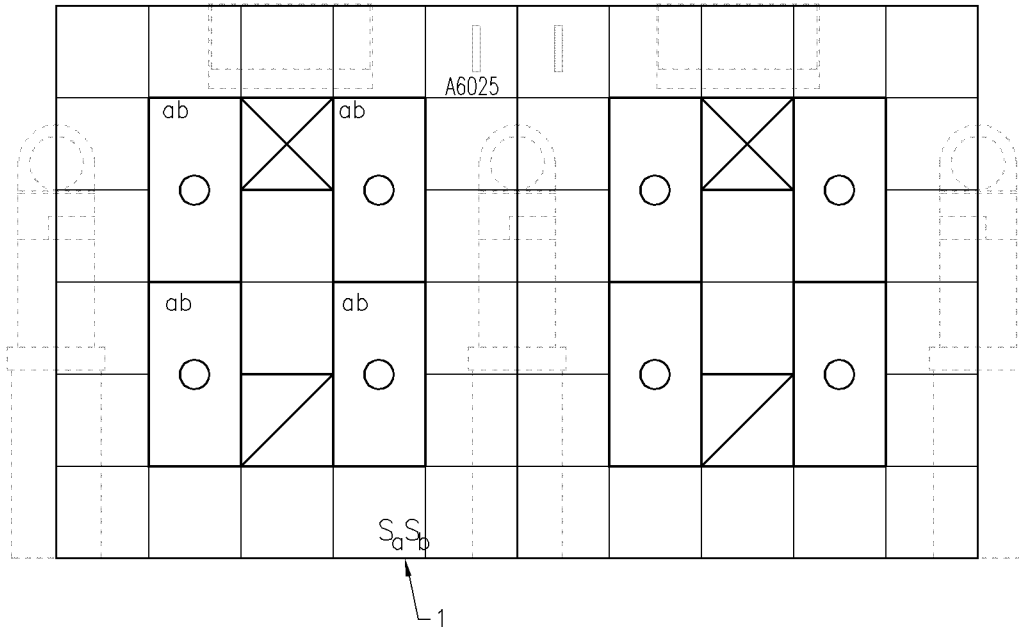
11.15 NSM (120 NSF)

DATE: 04/24/2006

0 1000 2000



1:50 SCALE (MILLIMETERS)



KEY NOTES

1. ALTERNATE LIGHT SWITCH LOCATION: IN CORRIDOR OPPOSITE 12 O'CLOCK CABINET

**DENTAL TREATMENT ROOM,
OPEN BAY(Z0012)**

3.20.04

DENTAL CLINIC

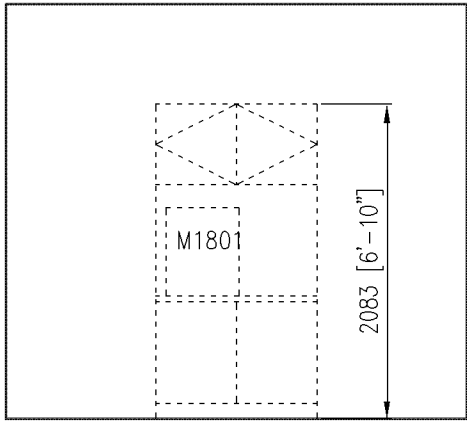
CEILING PLAN

DATE: 04/24/2006

0 1000 2000

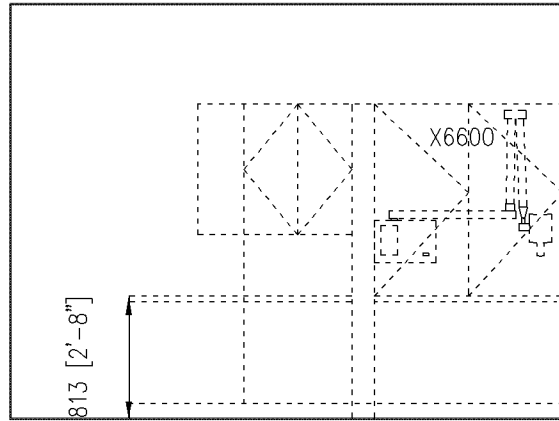


1:50 SCALE (MILLIMETERS)



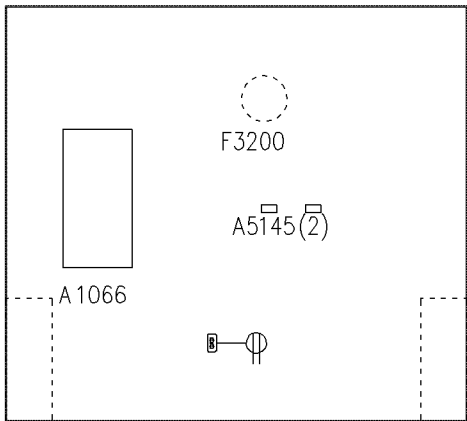
U0023

NORTH

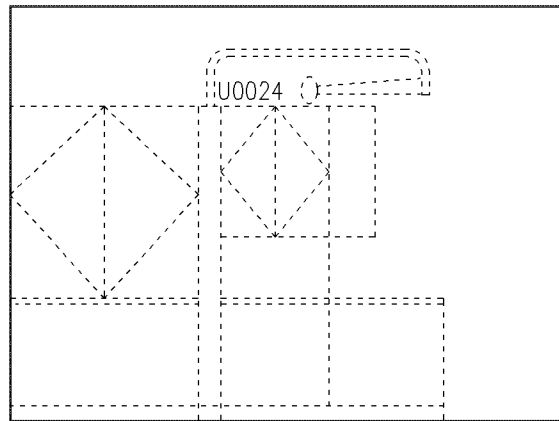


U0022

EAST



SOUTH



U0021

WEST

NOTES

1. SEE TYPICAL EQUIPMENT MOUNTING HEIGHTS SCHEDULE, SECTION 7.01
2. ELECTRICAL OUTLETS IN FREESTANDING CABINETS ARE SUPPLIED WITH THE CABINETS

KEY NOTES

1. X-RAY REMOTE CONTROL UNIT

**DENTAL TREATMENT ROOM,
OPEN BAY(Z0012)**

3.20.04

DENTAL CLINIC

ELEVATIONS

DATE: 04/24/2006

0 1000 2000



1:50 SCALE (MILLIMETERS)

Medical Equipment Room Guide Plates

3.20 Dental Unit

Plate Number 3.20.04

Room Name: Dental Treatment Room, Open Bay

SEPS# Z0012

JSN	Nomenclature	Qty	Army Cat	Navy Cat	Utilities						
					4	1	2	3	4	5	6
A1066	Mirror, Float Glass, with SS Frame	1	A	A	A
A5075	Dispenser, Soap, Disposable	1	C	C	C
A5080	Dispenser, Paper Towel, SS, Surface Mounted	1	A	A	A
A5106	Waste Disposal Unit, Sharps w/Glove Dispenser	1	C	C	C
A5145	Hook, Garment, Double, SS, Surface Mounted	2	A	A	A
A6025	Mirror, Safety, Convex, 8" Dia.	1	A	A	A
D3320	Chair, Operating, Dental	1	C	C	C	B	A	H	.	.	D
D3380	Stool, Operating, Dental, Doctor	1	C	C	C
D3390	Stool, Operating, Dental, Assistant	1	C	C	C
D7090	Utility Center, Dental, Floor Mounted	1	C	B	B	B	A	H	.	.	.
D8250	Delivery System, Dental Operating	1	C	C	C	B	B	H	.	.	.
F2010	Basket, Wastepaper, Round, Metal	1	C	C	C
F3200	Clock, Battery, 12" Diameter	1	C	C	C
M1801	Computer, Microprocessing, w/Flat Panel Monitor	1	C	C	C	.	A
U0015	Digital x-ray unit	1	F	F	F
U0020	Cart, Mobile, with Assistant Delivery	1	C	C	C	B	A	H	.	.	.
U0021	Cabinet, Dental, Central Console (Shared)	1	A	E	E	B	A
U0022	Cabinet, Dental, Central Console, X-ray (Shared)	1	A	E	E	B	A
U0023	Cabinet, Dental, 12 o'clock, Free-Standing	1	A	E	E	B	A	H	.	.	.
U0024	Light, Dental, Operating, Console Mounted	1	A	E	E	.	F
X6600	Radiographic Unit, Dental, Wall Mounted, 7 Ma (Shared)	1	F	F	F	.	A	.	.	.	B

April 24, 2006