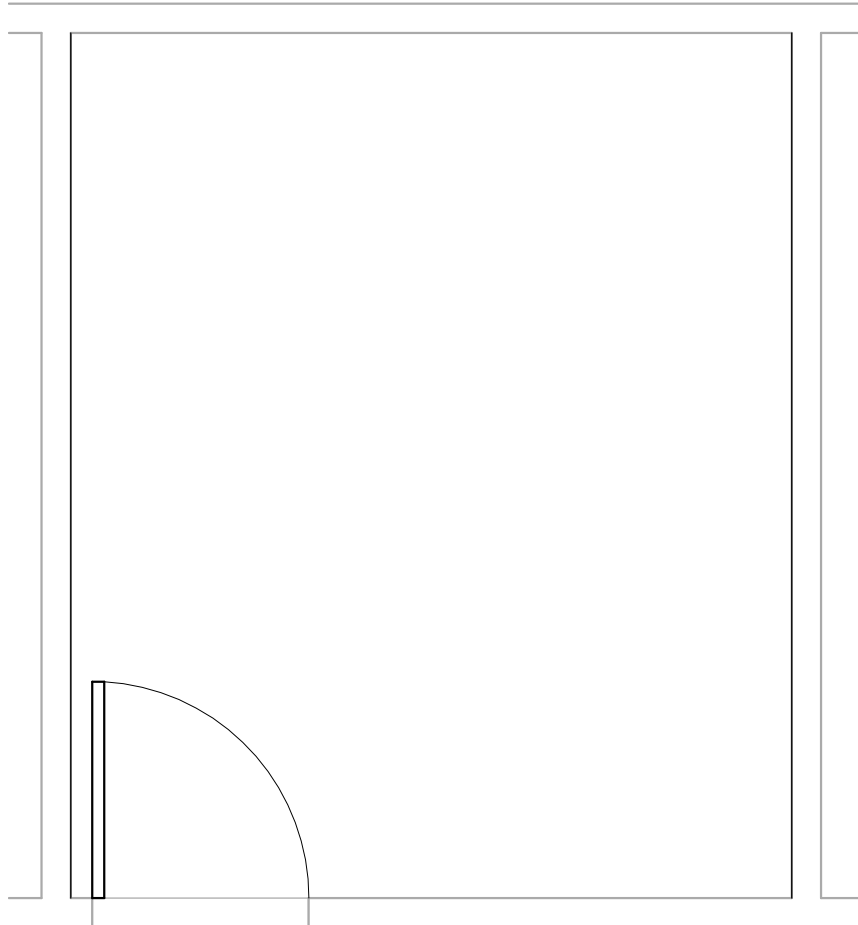
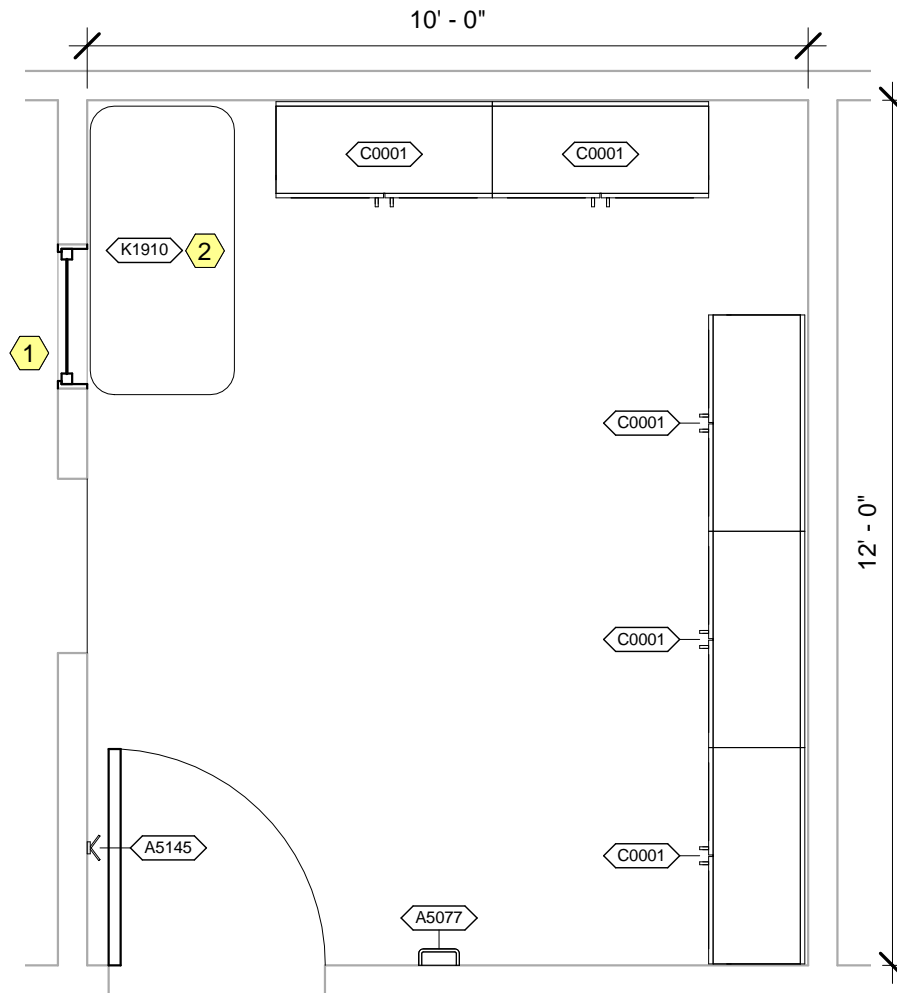


| | | | |
|---|-----------------|-------------------|----------------|
| Room Description: Dental Instrument Storage, Sterile, Medium (DN6) | NSF: 120 | DN6 | |
| Sheet Description: Room/Equipment Isometric | Scale: | Sheet 1 | of 6 |



DNSC6 - CEILING MOUNTED EQUIPMENT PLAN

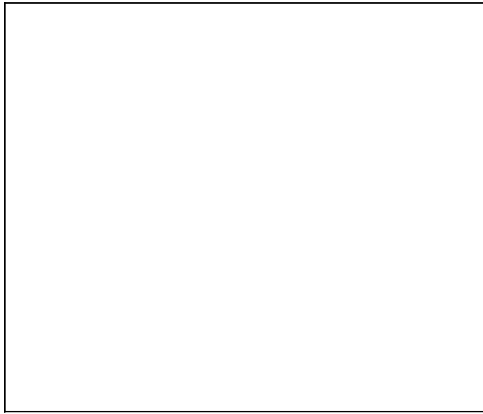
| | | | |
|---|----------------------------|-------------------|----------------|
| Room Description: Dental Instrument Storage, Sterile, Medium (DNSC6) | NSF: 120 | DNSC6 | |
| Sheet Description: Ceiling Mounted Equipment Plan | Scale: 3/8" = 1'-0" | Sheet 2 | of 6 |



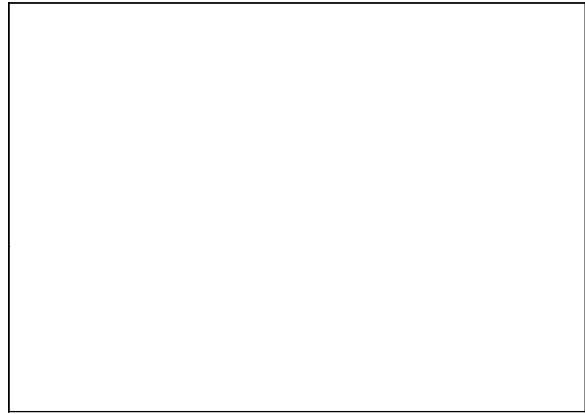
DNSC6 - NOTES

- 1 Pass Window, 24"W x 36"H.
- 2 JSN K1910, Table, Work, Stainless Steel, shown as 48"W x 24"D, shall have casters.

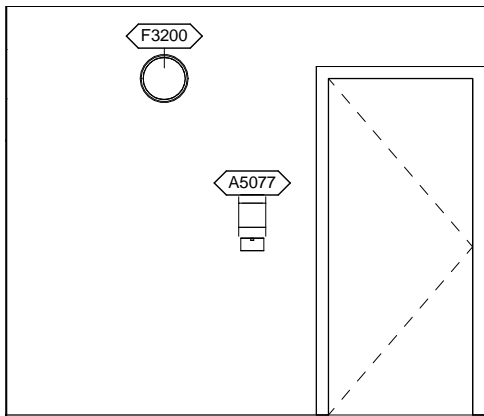
| | | | |
|---|----------------------------|-------------------|----------------|
| Room Description: Dental Instrument Storage, Sterile, Medium (DNSC6) | NSF: 120 | DNSC6 | |
| Sheet Description: Equipment Plan | Scale: 3/8" = 1'-0" | Sheet 3 | of 6 |



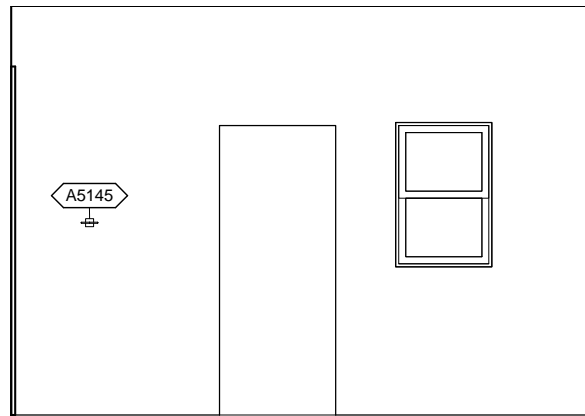
DNSC6 - NORTH ELEVATION



DNSC6 - EAST ELEVATION



DNSC6 - SOUTH ELEVATION



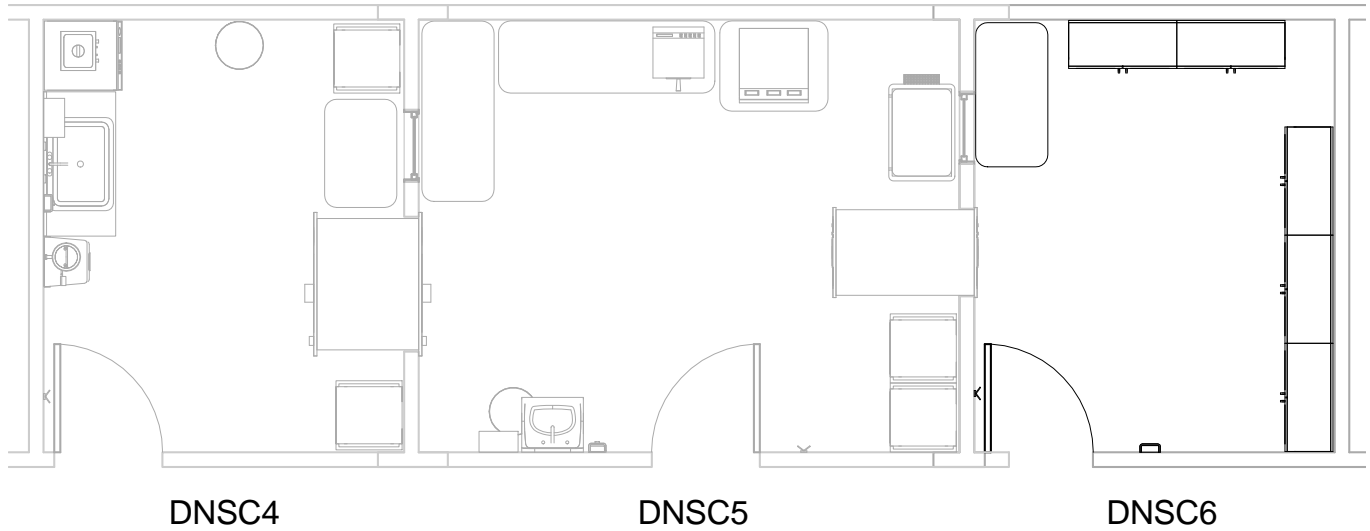
DNSC6 - WEST ELEVATION

| | | | |
|---|----------------------------|-------------------|----------------|
| Room Description: Dental Instrument Storage, Sterile, Medium (DNSC6) | NSF: 120 | DNSC6 | |
| Sheet Description: Interior Room Elevations | Scale: 1/4" = 1'-0" | Sheet 4 | of 6 |

DNSC6 - EQUIPMENT SCHEDULE

| JSN | Nomenclature | Qty | LF | Logistics | | | Utilities | | | | | | | |
|-------|--|-----|----|-----------|----|----|-----------|---|---|---|---|---|---|---|
| | | | | AR | NA | AF | VA | 1 | 2 | 3 | 4 | 5 | 6 | |
| A5077 | Dispenser, Hand Sanitizer, Hands free | 1 | | C | C | C | C | - | - | - | - | - | - | - |
| A5145 | Hook, Garment, Double, SS, Surface Mounted | 1 | | A | A | A | A | - | - | - | - | - | - | - |
| C0001 | Cabinet, Floor Standing, 2 GDO, ST, 60x36x16 | 5 | | A | A | A | A | - | - | - | - | - | - | - |
| K1910 | Table, Work, Stainless Steel | 1 | | A | A | A | A | - | - | - | - | - | - | - |

| | | | |
|---|-----------------|-------------------|----------------|
| Room Description: Dental Instrument Storage, Sterile, Medium (DNSC6) | NSF: 120 | DNSC6 | |
| Sheet Description: Equipment Schedule | Scale: | Sheet 5 | of 6 |



| | | | |
|---|-----------------------------|-------------------|----------------|
| Room Description: Dental Instrument Storage, Sterile, Medium (DNSC6) | NSF: 120 | DNSC6 | |
| Sheet Description: Flow Diagram | Scale: 3/16" = 1'-0" | Sheet 6 | of 6 |