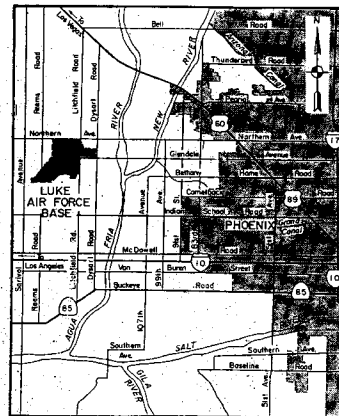
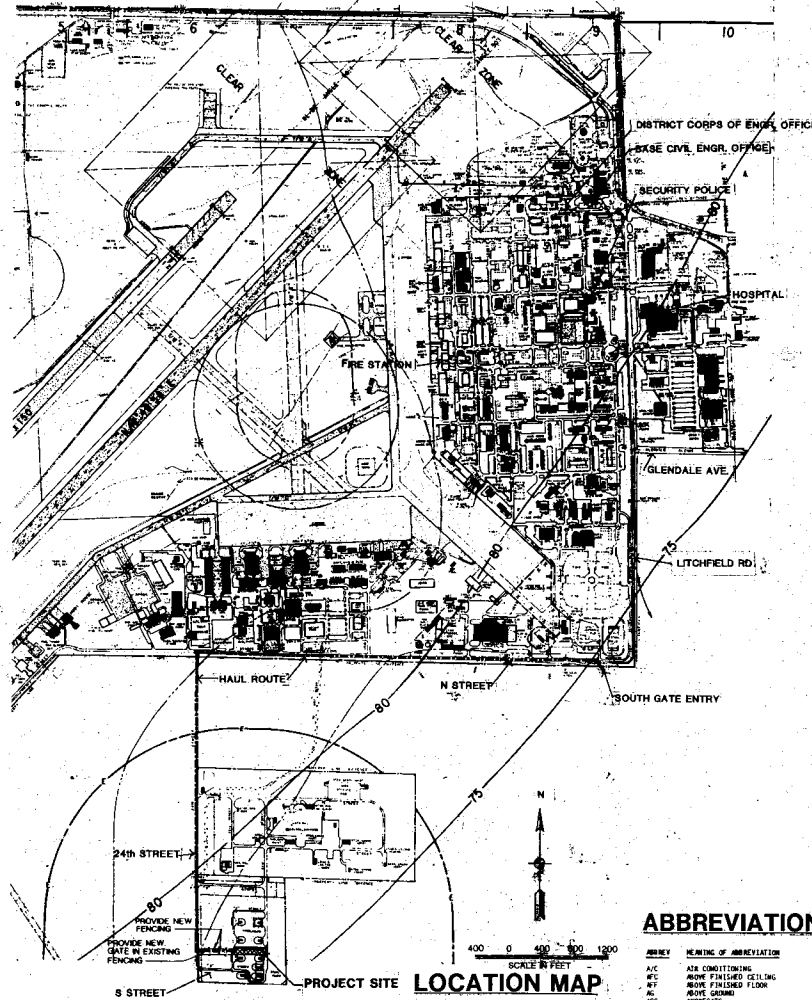


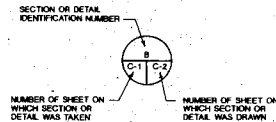
**FUNCTION ANALYSIS - VE PAYS**



# LUKE AIR FORCE BASE, ARIZONA MUNITIONS STORAGE IGLOOS (FY-90-MCP)

**SCHEDULE OF DRAWINGS**

CONSECUTIVE SHEET NO.	DISCIPLINE SHEET NO.	DRAWING TITLES
1 OF 11	G-1	VICINITY MAP, LOCATION PLAN & SCHEDULE OF DRAWINGS
2 OF 11	C-1	TOPOGRAPHIC PLAN
3 OF 11	C-2	SITE PLAN, GRADING & DRAINAGE PLAN
4 OF 11	A-1	PLAN AND SECTIONS
5 OF 11	A-2	PORTAL WALL PLAN, ELEVATIONS & DETAILS
6 OF 11	A-3	10' OF BLAST DOOR
7 OF 11	A-4	MISCELLANEOUS BLAST DOOR DETAILS
8 OF 11	S-1	PORTAL AND REAR WALLS PLAN, ELEVATION & SECTION
9 OF 11	M-1	MISCELLANEOUS SITE PLAN
10 OF 11	E-1	ELECTRICAL SITE PLAN
11 OF 11	E-2	ELECTRICAL PLAN AND DETAILS



**SECTION/DETAIL SYMBOL**

**TELEPHONE NUMBERS:**  
 HOSPITAL: (602) 856-7360  
 SECURITY POLICE: (602) 856-5970  
 FIRE STATION: (602) 856-6641

**ABBREVIATIONS**

ABBRV	MEANING OF ABBREVIATION	ABBRV	MEANING OF ABBREVIATION	ABBRV	MEANING OF ABBREVIATION	ABBRV	MEANING OF ABBREVIATION
AVC	AIR CONDITIONING	DMG	DRAWING	NEW	HEATING/COOLING/VENTILATING	PTR	PARTITION
AWF	ARROW FINISHED CEILING	EL	ELEVATION	NEW	HARDWARE	RA	RETURN AIR
WFL	WOOD FINISHED FLOOR	ELCT	ELECTRIC (AL)	HM	HOLLOW METAL	REF	REFERENCE
AG	AROSE GRASS	ENGR	ENGINEERING	HORIZ	HORIZONTAL	RES	RESILIENT
AS	ASBESTOS	EQU	EQUAL	HEAT	HEATING RETURN	REV	REVISION(S); REVISED
AL	AIR HANDLING	EST	ESTIMATE	HS	HEATING SUPPLY	RST	RIGID RIB
AM	ALTER	EX	EXPOSED	HGT	HEIGHT	RM	ROOM
MND	MUNICIPAL	EXP	EXPOSED	HND	HANDRAIL	RN	RIDGE
ASP	ASPHALT	EXIST	EXISTING	ID	INSIDE DIAMETER	SA	SUPPLY AIR
AT	ASPHALT TILE	EMD	EMERALD	INCL	INCLINE	SAI	SOLID CONC
BO	BOARD	ENGL	ENGLISH	INSUL	INSULATE	SCH	SCHEDULE
BP	BROWN FINISHED FLOOR	EPI	EPIPHANY	JNT	JUNCTION	SC	SHEET GLASS
BT	BITUMENOUS	PE	FINE EXPANDER CONTACT	JOIT	JOINT	SH	SHED
BFL	BUILDING	FF	FACILITY FINISH	LD	LINEN	SHL	SHEET METAL
BLS	BLOCK	FFL	FINISHED FLOOR ELEVATION	LG	LIGHT	SO	SOAKAWAY
BS	BUILDING	FFL	FINISHED FLOOR ELEVATION	LI	LINE LONG	STB	STAIRWAY
CA	CONCRETE	FFL	FINISHED FLOOR ELEVATION	LT	LINE LONG	STL	STEEL
C	CANTON	FFL	FINISHED FLOOR ELEVATION	LVE	LOUVER	STOR	STORAGE
CC	CONCRETE	FFL	FINISHED FLOOR ELEVATION	LWD	LUMBER	SUF	SURFACE
CEA	CERTIFICATE	FFL	FINISHED FLOOR ELEVATION	MAC	MASONRY	SUP	SUPPER
CL	CURTAIN GLASSING	FFL	FINISHED FLOOR ELEVATION	MAT	MATERIAL	SW	SURFACE
CFA	CURTAIN WALL PER MINUTE	FFL	FINISHED FLOOR ELEVATION	MB	METAL	SWP	SURFACE
CF	CURTAIN WALL	FFL	FINISHED FLOOR ELEVATION	MC	METAL	TS	TOP OF HALL
CFP	CURTAIN WALL PER MINUTE	FFL	FINISHED FLOOR ELEVATION	MCD	METAL CLIPPING	TT	TYPICAL
CLD	CELLING HEIGHT	FFL	FINISHED FLOOR ELEVATION	ME	METAL	UC	UNDERHUNG
CLB	CLUB	FFL	FINISHED FLOOR ELEVATION	MEM	MEMBER	UF	UNDERHUNG
CLR	CLEARANCE	FFL	FINISHED FLOOR ELEVATION	MFR	METAL	UNF	UNDERHUNG
CO	COLUMN	FFL	FINISHED FLOOR ELEVATION	MIS	MISCELLANEOUS	VER	VERTICAL
COB	CONCRETE	FFL	FINISHED FLOOR ELEVATION	MO	MORTAR	W	WALL
CONC	CONCRETE	FFL	FINISHED FLOOR ELEVATION	MOR	MORTAR	WT	WATER
CONCT	CONCRETE	FFL	FINISHED FLOOR ELEVATION	MOT	MOTOR	W/O	WITHOUT
CONTR	CONTRACTOR	FFL	FINISHED FLOOR ELEVATION	MTH	MATERIAL		
COOR	CORRODED OR CORROD	FFL	FINISHED FLOOR ELEVATION	N	NOT		
CPL	CORNER PLASTER	FFL	FINISHED FLOOR ELEVATION	N/A	NOT A CONTRACT		
CSP	CONCRETE	FFL	FINISHED FLOOR ELEVATION	NB	NOT B		
CST	CONCRETE	FFL	FINISHED FLOOR ELEVATION	NBS	NOT B		
CFT	COUNTER	FFL	FINISHED FLOOR ELEVATION	ND	NOT TO SCALE		
CS	CORNER	FFL	FINISHED FLOOR ELEVATION	NF	NOT FINISHED		
CSD	CORNER DETAIL	FFL	FINISHED FLOOR ELEVATION	NH	NOT HOLLOW		
CSP	CORNER PLASTER	FFL	FINISHED FLOOR ELEVATION	NL	NOT L		
CSP	CORNER PLASTER	FFL	FINISHED FLOOR ELEVATION	NO	NOT		
CSP	CORNER PLASTER	FFL	FINISHED FLOOR ELEVATION	NS	NOT S		
CSP	CORNER PLASTER	FFL	FINISHED FLOOR ELEVATION	NS	NOT S		
CSP	CORNER PLASTER	FFL	FINISHED FLOOR ELEVATION	NS	NOT S		
CSP	CORNER PLASTER	FFL	FINISHED FLOOR ELEVATION	NS	NOT S		

**GENERAL PAVING NOTE:**  
 EXISTING MUNITIONS ROADWAYS HAVE BEEN RECENTLY RESURFACED. ANY DAMAGE CAUSED BY CONTRACTOR IS TO BE REPAIRED AS DIRECTED BY CONTRACTING OFFICER.

**GENERAL SITE BORROW & DISPOSAL NOTE:**  
 THERE IS NO BORROW MATERIAL AVAILABLE ON SITE. ALL MATERIALS REQUIRING DISPOSAL SHALL BE REMOVED FROM SITE AND DISPOSED OF IN ACCORDANCE WITH ALL GOVERNING AGENCIES AND REGULATIONS.

**AS-BUILT**  
 CONTR. NO. 91-C-0029

REVISION DATE SUBSECTION

DESIGNED: W.M.D.	LUKE AIR FORCE BASE	ARIZONA
CHECKED: J.D.P.		
APPROVED: J.D.P.		

VICINITY MAP, LOCATION PLAN & SCHEDULE OF DRAWINGS

SIGNATURES AFFIXED BELOW INDICATE OFFICIAL RECOMMENDATION AND APPROVAL OF ALL DRAWINGS IN THIS SET AS INDICATED ON THIS SHEET

*Thomas A. Lively* PROJECT ENGINEER  
*Jack A. Lively* PROJECT ENGINEER

**JACK A. LIVERY** PROJECT ENGINEER

SCALE AS NOTED PER PLAN 23 APR 90  
 FILE NO. 219-25-321  
 SHEET 1 OF 11

SAFETY 3 PAYS

1279/1280

# FUNCTION ANALYSIS - VE PAYS

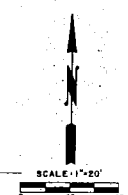
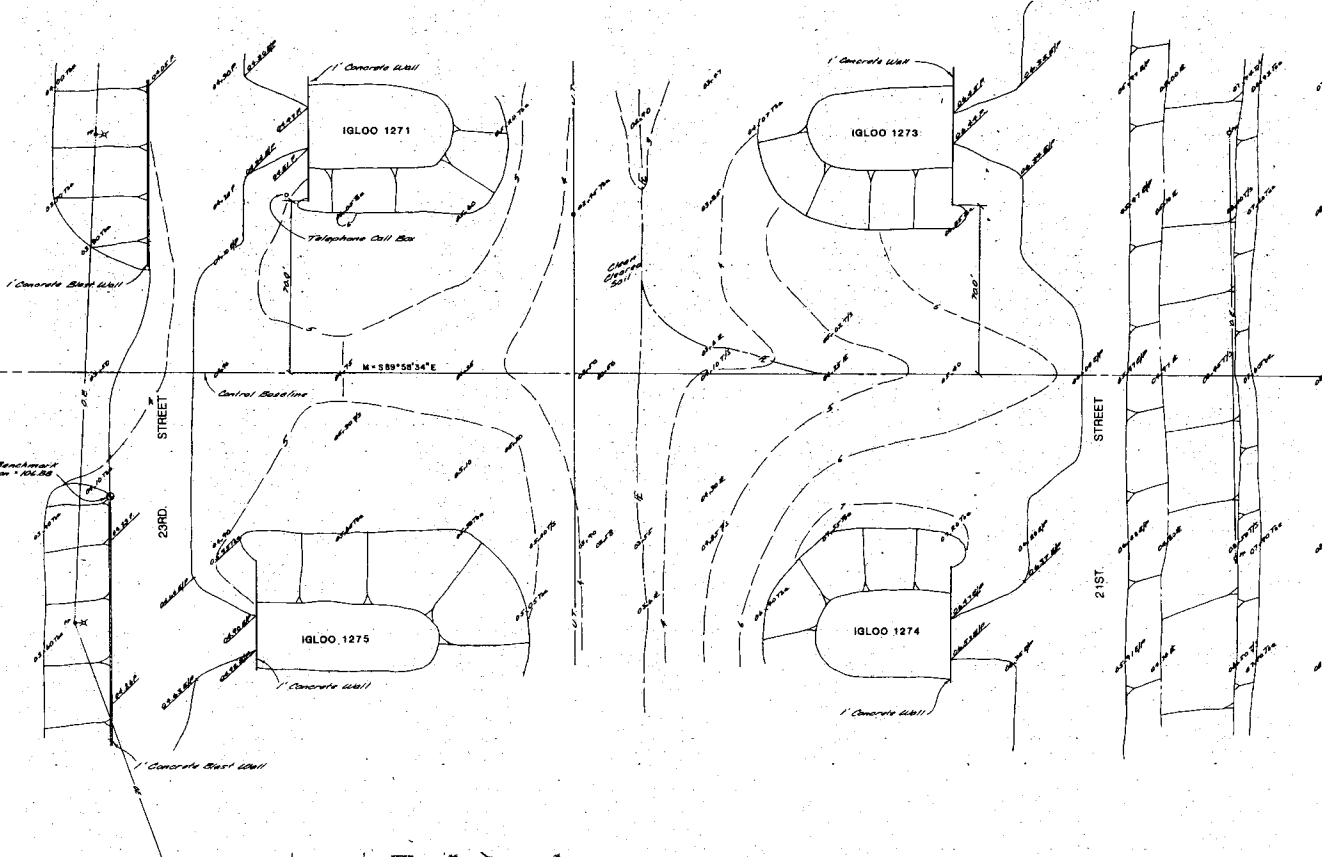
8 9  
17 16  
1/4 MI. Corner Section 14  
200' X 200' Block Cont. 16  
M=1327.84'

STREET  
M=1327.84'

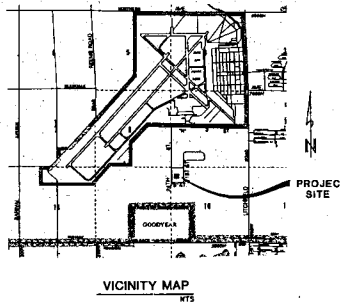
24TH  
433.95'

SOUTH (ASSUMED)

Round 30' from top



NEW	EXISTING	LEGEND
[Symbol]	[Symbol]	BUILDING
[Symbol]	[Symbol]	ASPHALT CONC. PAVT.
[Symbol]	[Symbol]	PORTLAND CEMENT CONCRETE PAVT.
[Symbol]	[Symbol]	POWER POLE
[Symbol]	[Symbol]	U.T. UNDERGROUND TELEPHONE LINE
[Symbol]	[Symbol]	TOE OF SLOPE
[Symbol]	[Symbol]	T/O TOP OF SLOPE
[Symbol]	[Symbol]	E/P EDGE OF PAVEMENT
[Symbol]	[Symbol]	LIGHT POLE
[Symbol]	[Symbol]	O.E. OVERHEAD ELECTRIC LINE
[Symbol]	[Symbol]	ELEVATION



**LEGAL DESCRIPTION**

A portion of the Northwest quarter of Section 14, Township 2 North, Range 1 West of the Gila and Salt River Base and Meridian, Maricopa County, Arizona.

**BENCHMARKS:**

Top of Brass Cap in handhole located at the Northwest corner of Section 14:  
Elevation: 100.00 (Assumed) as per Luke Air Force Base Civil Engineering Department.

**SITE BENCHMARK:**

"B" on top of 1 foot concrete Blast wall, North end of said Blast wall.  
Elevation: 106.88

**TITLE SEARCH NOTE:**

The information upon which was compiled without benefit of a Title Search and therefore does not necessarily reflect the true condition of the premises with respect to easements, rights-of-way, agreements, etc. of public records.

**UTILITY NOTE:**

Information concerning existing underground utilities has been obtained from existing records, however, there may not necessarily reflect the exact location of such facilities. Any excavation or construction activity within the property should be done only after consulting the San and Engineers Office Engineer for exact location of facilities within the site. Plans' map 2077.

**CERTIFICATION:**

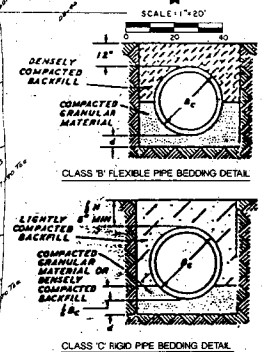
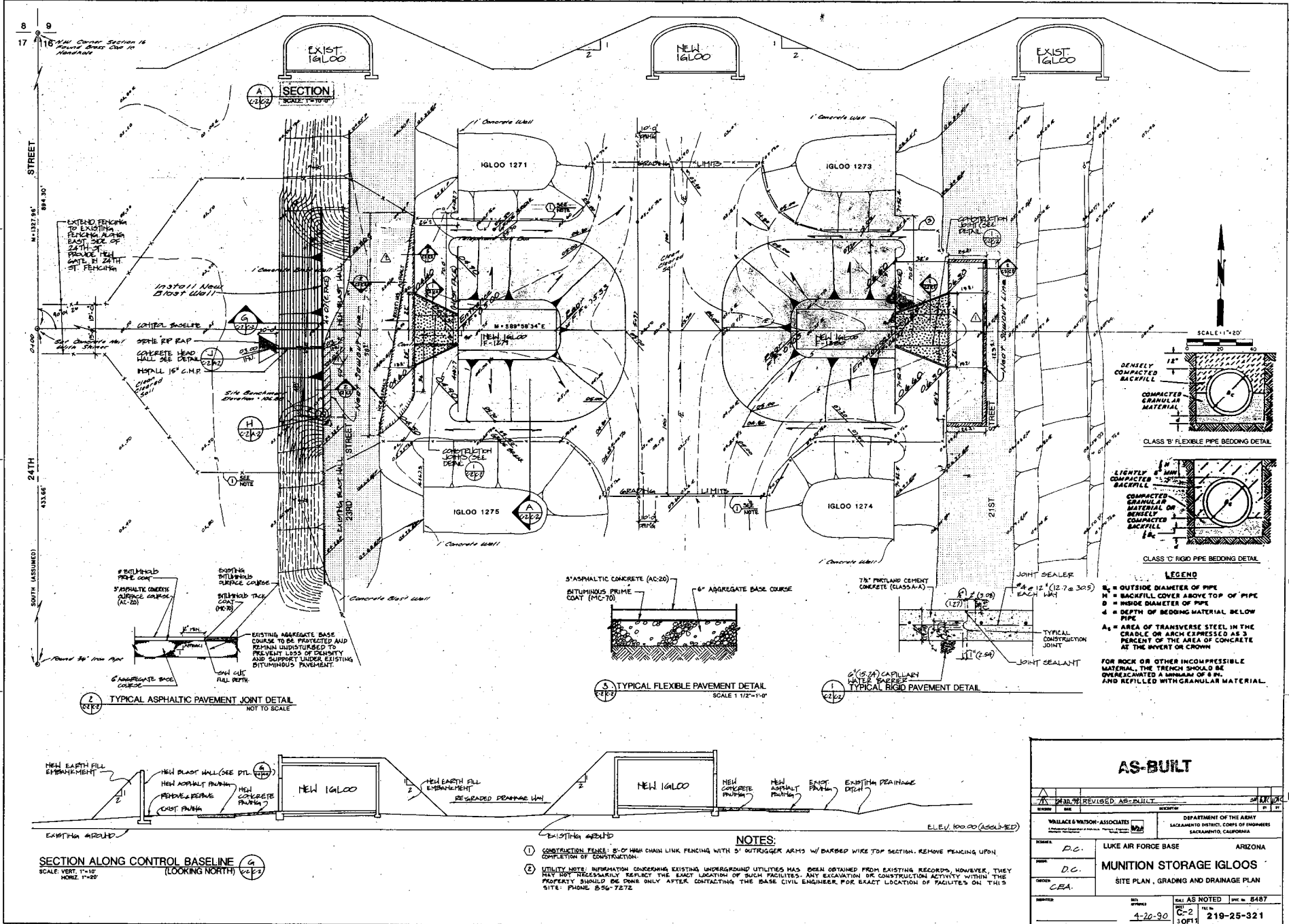
I hereby certify the above Topographic Survey was surveyed under my direction on the date shown and this Topographic Survey is a true and correct representation thereof to the best of my knowledge.

*Charles J. Olson* 12/1/88  
Date

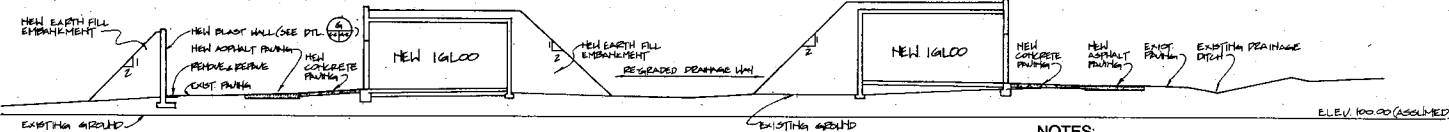
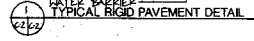
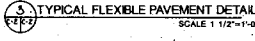
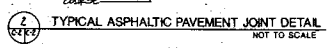


AS-BUILT			
DATE	BY	REVISION	NO.
WILLIAMS & NATION-ASSOCIATES SACRAMENTO DISTRICT, CORPS OF ENGINEERS SACRAMENTO, CALIFORNIA		DEPARTMENT OF THE ARMY SACRAMENTO DISTRICT, CORPS OF ENGINEERS SACRAMENTO, CALIFORNIA	
DC.		LUKE AFB ARIZONA	
DC.		MUNITIONS STORAGE IGLOOS	
C.E.A.		TOPOGRAPHIC SURVEY	
DATE: 4-20-90		SCALE AS SHOWN 1" = 8487'	
SHEET: C-1		PAGE NO. 219-25-321	
OF: 11			

FUNCTION ANALYSIS - VE PAYS

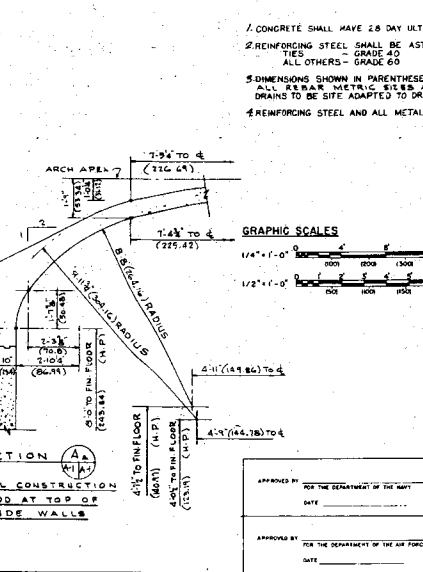
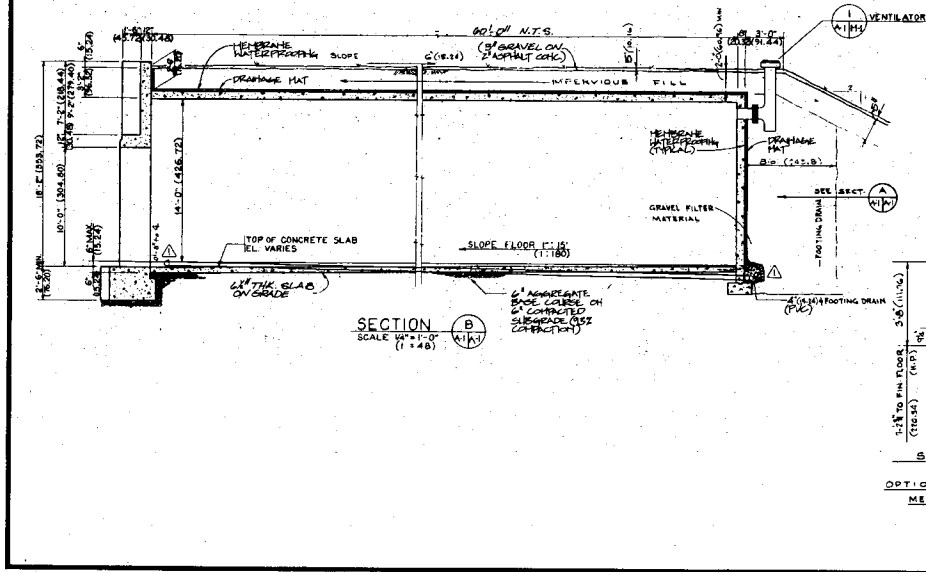
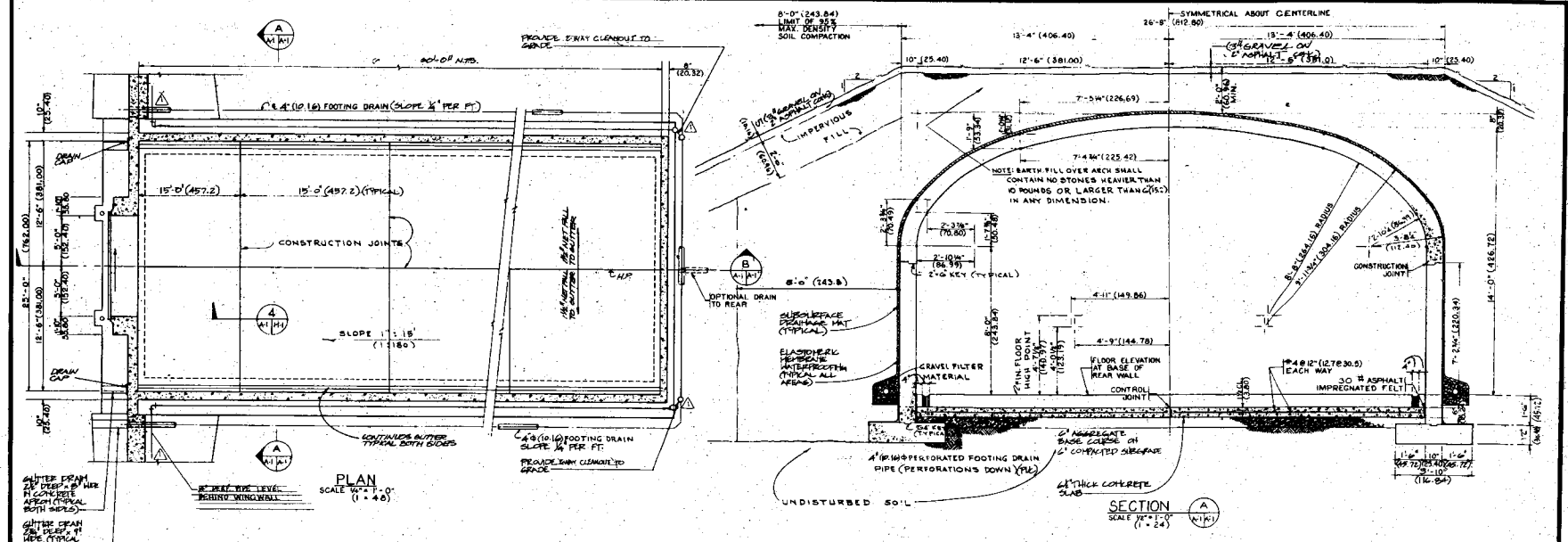


**LEGEND**  
 B = OUTSIDE DIAMETER OF PIPE  
 H = BACKFILL COVER ABOVE TOP OF PIPE  
 D = INSIDE DIAMETER OF PIPE  
 G = DEPTH OF BEDDING MATERIAL BELOW PIPE  
 A = AREA OF TRANSVERSE STEEL IN THE CRADLE OR ARCH EXPRESSED AS A PERCENT OF THE AREA OF CONCRETE AT THE INVERT OR CROWN  
 FOR ROCK OR OTHER INCOMPRESSIBLE MATERIAL, THE TRENCH SHOULD BE OVEREXCAVATED A MINIMUM OF 8 IN. AND REILLED WITH GRANULAR MATERIAL.

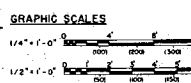


- NOTES:**
- CONSTRUCTION FENCE: 5'-0\"/>
  - UTILITY NOTE: INFORMATION CONCERNING EXISTING UNDERGROUND UTILITIES HAS BEEN OBTAINED FROM EXISTING RECORDS, HOWEVER, THEY MAY NOT NECESSARILY REFLECT THE EXACT LOCATION OF SUCH FACILITIES. ANY EXCAVATION OR CONSTRUCTION ACTIVITY WITHIN THE PROPERTY SHOULD BE DONE ONLY AFTER CONTACTING THE BASE CIVIL ENGINEER FOR EXACT LOCATION OF FACILITIES ON THIS SITE. PHONE: 856-7272.

<b>AS-BUILT</b>			
DATE: 12/19/90		REVISION: AS-BUILT	
DRAWN BY: D.C.		CHECKED BY: [Signature]	
DESIGNED BY: D.C.		DATE: 4-20-90	
PROJECT: LUKE AIR FORCE BASE		LOCATION: ARIZONA	
<b>MUNITION STORAGE IGLOOS</b>			
SITE PLAN, GRADING AND DRAINAGE PLAN			
SHEET NO. 4-20-90		SHEET NO. 219-25-321	

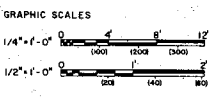
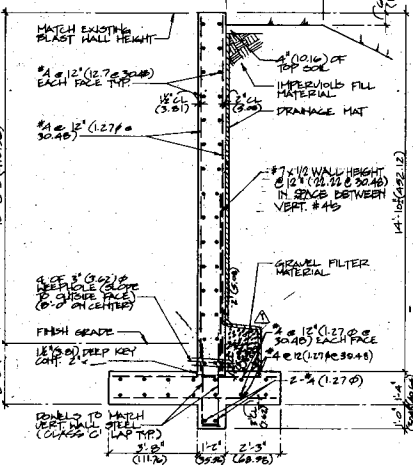
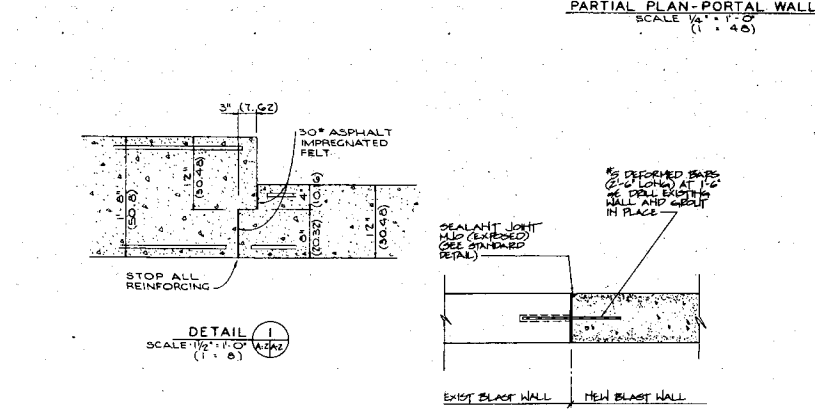
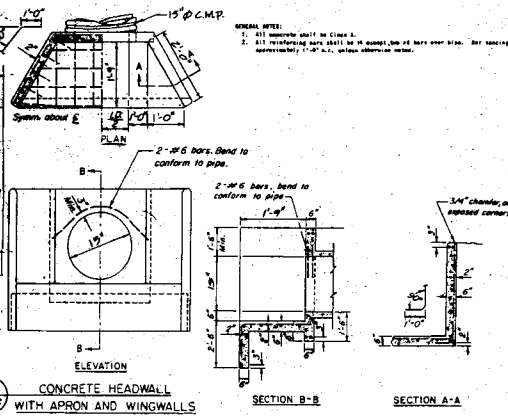
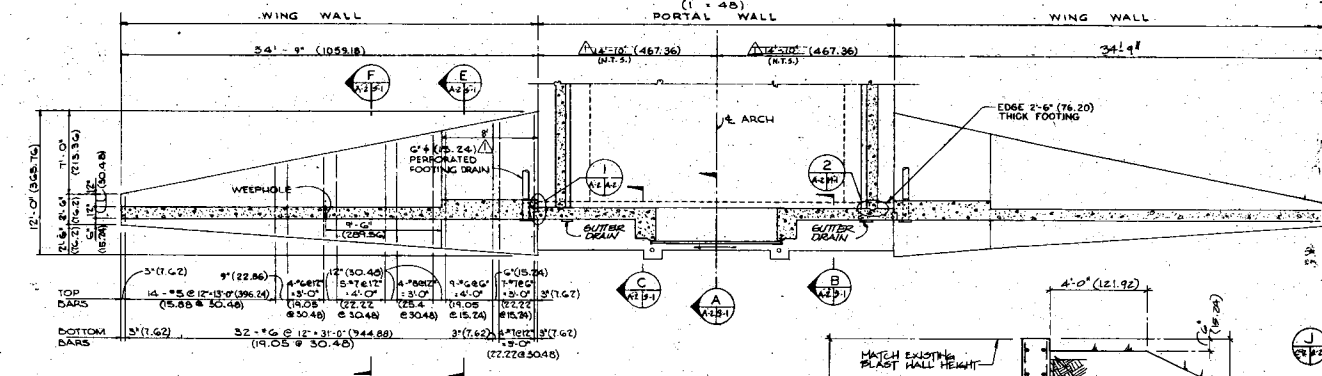
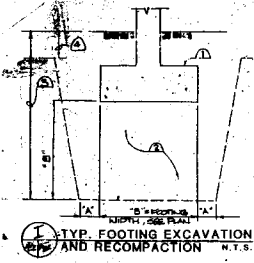
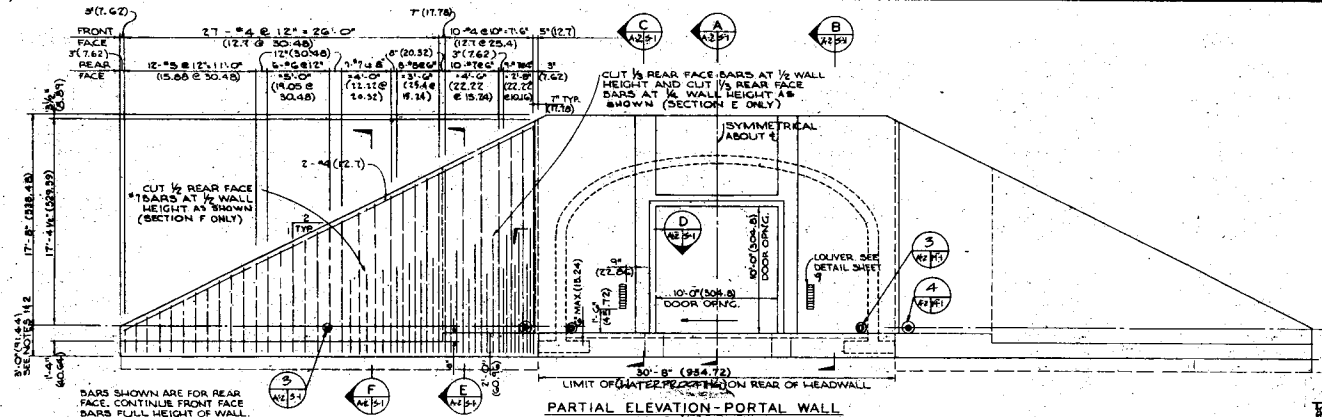


- NOTES**
1. CONCRETE SHALL HAVE 28 DAY ULTIMATE STRENGTH (F'<sub>c</sub>) OF 4000 P.S.I.
  2. REINFORCING STEEL SHALL BE ASTM A615 WITH THE FOLLOWING GRADES:  
TIES - GRADE 40  
ALL OTHERS - GRADE 60
  3. DIMENSIONS SHOWN IN PARENTHESES ARE CENTIMETERS UNLESS OTHERWISE NOTED. (FOR INFO ON...)  
ALL REBAR METRIC SIZES ARE IN MILLIMETERS  
DRAINGS TO BE SITE ADAPTED TO DRAIN EITHER TO THE FRONT OR REAR OF THE MAGAZINE.
  4. REINFORCING STEEL AND ALL METAL SHALL BE MADE ELECTRICALLY CONTINUOUS BY TYING OR WELDING.



AS-BUILT			
SYMBOL	DESCRIPTION	DATE	APPROVAL
REVISIONS			
MILLACK & WATSON - ASSOCIATES			
DEPARTMENT OF THE ARMY OFFICE OF THE CHIEF ENGINEER MILITARY CONSTRUCTION - ENGINEERING DIVISION WASHINGTON, D. C.			
DRAWN BY: W.M.D. LUKE AIR FORCE BASE, ARIZONA			
TRACED BY: W.M.D.			
CHECKED BY: J.D.P.			
DESIGNED BY: J.D.P.			
APPROVED BY: FOR THE DEPARTMENT OF THE ARMY		DATE:	
APPROVED BY: FOR THE DEPARTMENT OF THE AIR FORCE		DATE: 4-20-90	
DRAWN BY: W.M.D.		SYMBOL: 8487	
CHECKED BY: J.D.P.		DATE: 4-20-90	
DESIGNED BY: J.D.P.		SYMBOL: 8487	
DRAWN BY: W.M.D.		SYMBOL: 8487	
CHECKED BY: J.D.P.		SYMBOL: 8487	
DESIGNED BY: J.D.P.		SYMBOL: 8487	

1279/1280

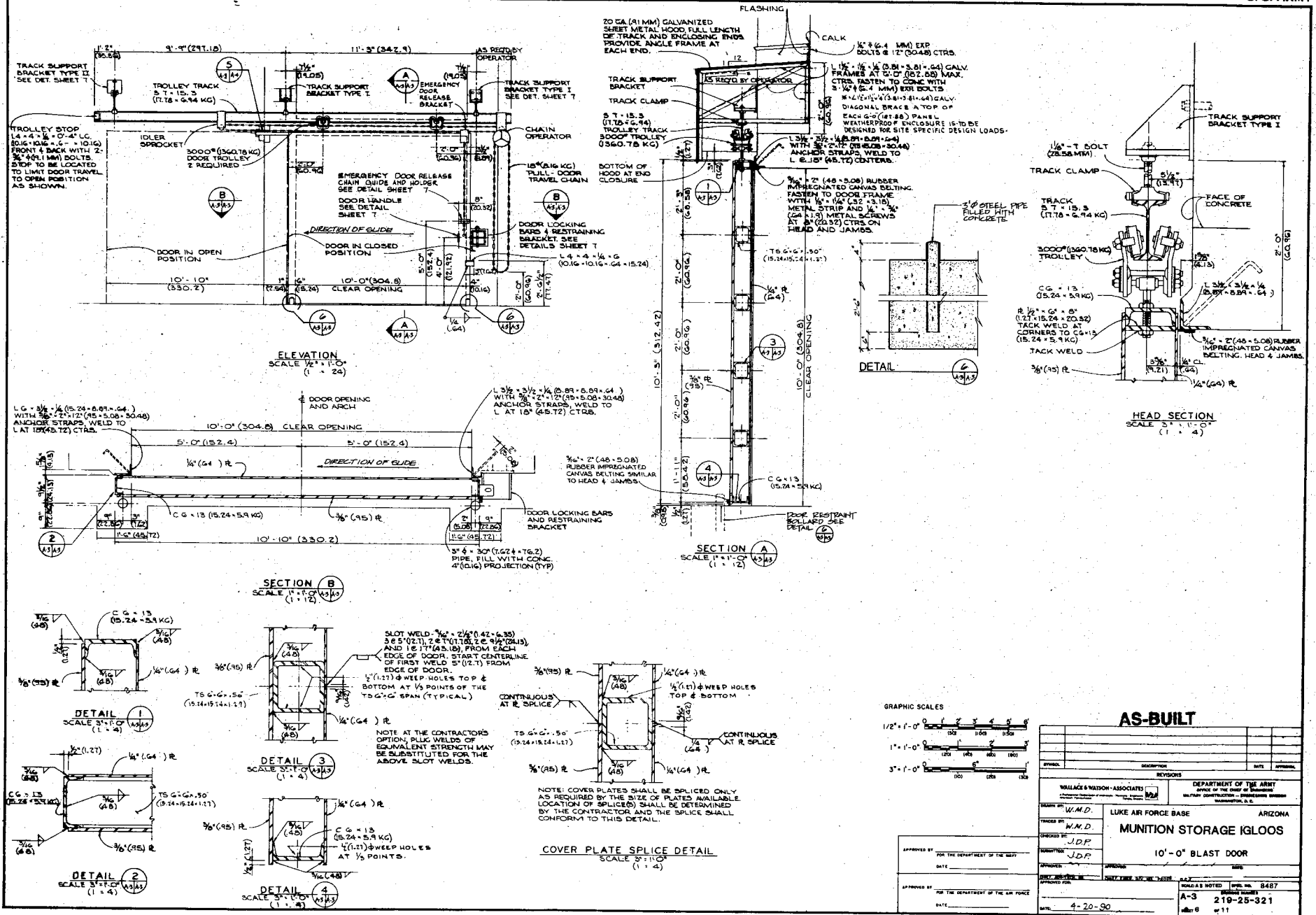


NOTES:  
1) FOOTINGS ARE SIZED FOR A SOIL BEARING VALUE OF 4000 PSF.

AS-BUILT		REVISIONS	
NO.	DESCRIPTION	DATE	APPROVAL
1	REVISED AS-BUILT		

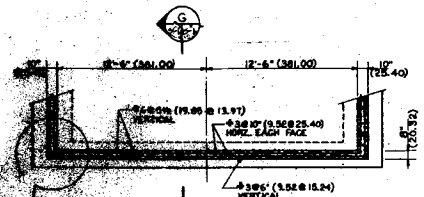
WALLACE & MATSON - ASSOCIATES		DEPARTMENT OF THE ARMY	
BY: W.M.D.		OFFICE OF THE CHIEF OF ENGINEERS	
CHECKED BY: W.M.D.		MILITARY CONSTRUCTION ENGINEERING DIVISION	
DESIGNED BY: J.D.P.		WASHINGTON, D.C.	
DRAWN BY: J.A.P.		MUNITION STORAGE IGLOOS	
APPROVED BY: FOR THE DEPARTMENT OF THE ARMY		PORTAL WALL	
DATE:		PLAN, ELEVATION AND DETAILS	
APPROVED BY: FOR THE DEPARTMENT OF THE AIR FORCE		DRAWING NUMBER	
DATE:		A-2 219-25-321	
DATE: 4-20-90		SHEETS 11	

1279/1280

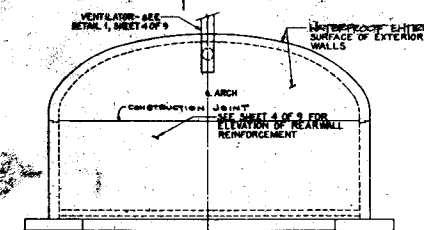


1279/1280

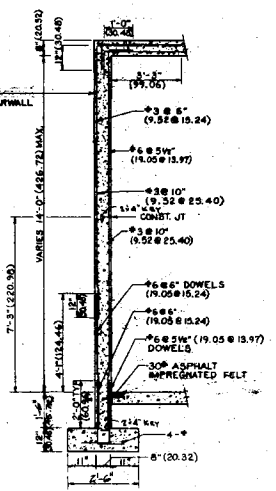




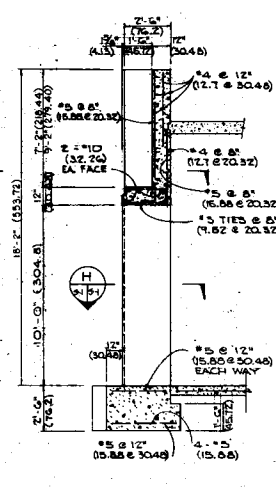
PLAN-REAR WALL  
SCALE 1/4"=1'-0"  
(1:48)



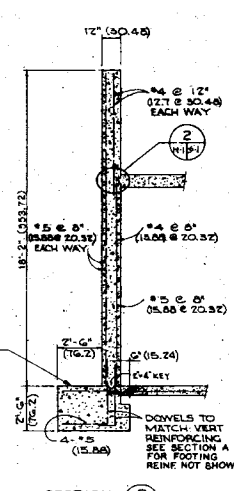
ELEVATION-REAR WALL  
SCALE 1/4"=1'-0"  
(1:48)



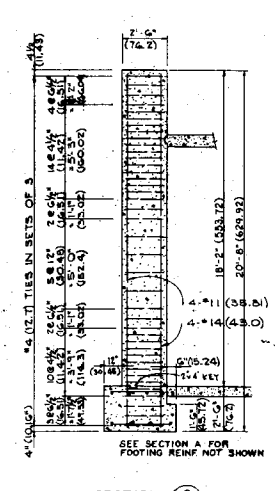
SECTION G  
SCALE 1/2"=1'-0"  
(1:24)



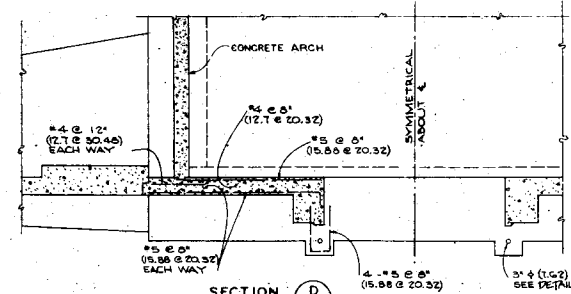
SECTION A  
SCALE 3/8"=1'-0"  
(1:52)



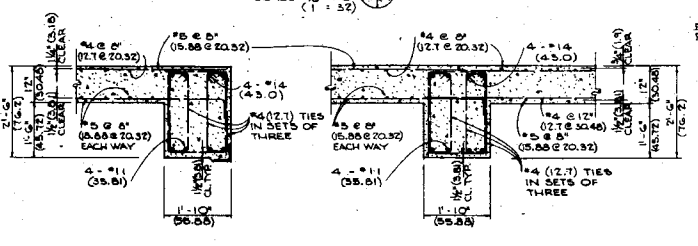
SECTION B  
SCALE 3/8"=1'-0"  
(1:52)



SECTION C  
SCALE 3/8"=1'-0"  
(1:52)

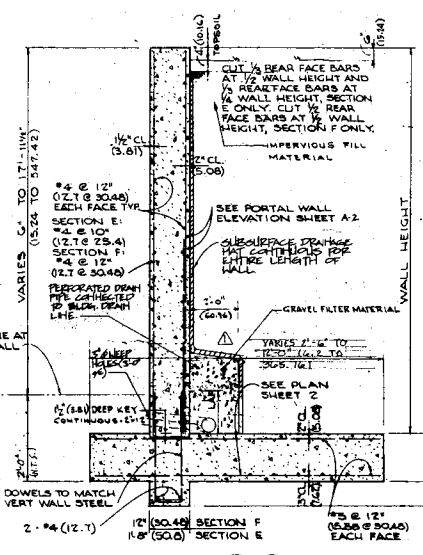


SECTION D  
SCALE 3/8"=1'-0"  
(1:52)

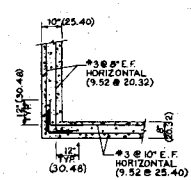


SECTION H  
SCALE 3/8"=1'-0"  
(1:52)

SECTION I  
SCALE 3/8"=1'-0"  
(1:52)

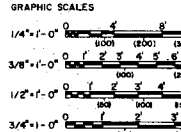


SECTION E F  
SCALE 3/8"=1'-0"  
(1:52)



DETAIL K  
SCALE 1/2"=1'-0"  
(1:24)

- NOTES:
- TOP OF MAGAZINE PORTAL FOOTING MUST BE MAINTAINED AT FINISHED FLOOR ELEVATION FOR THE FULL 2'-0" BEYOND RACE OF PORTAL TO MAINTAIN ALPHA PROOF OPERATION. DO NOT EXTEND ROCK OR FLOOR SLABS UNDER PORTAL.
  - FOR OVER EXCAVATION OF FOOTING SEE DETAIL J.

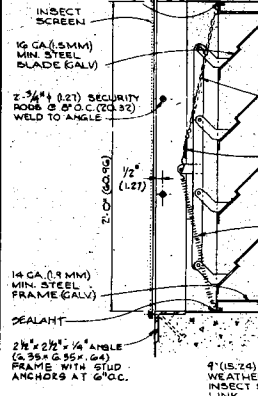


AS-BUILT

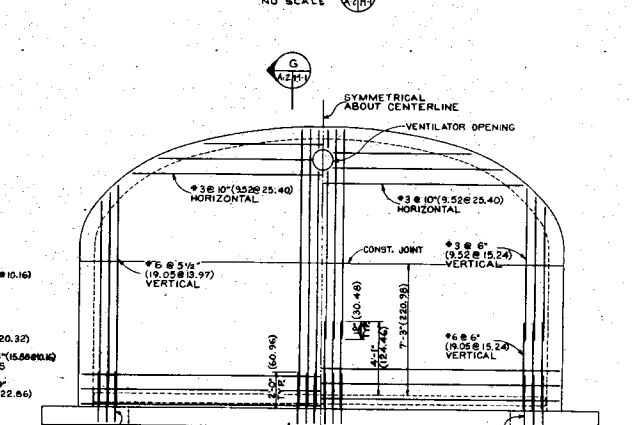
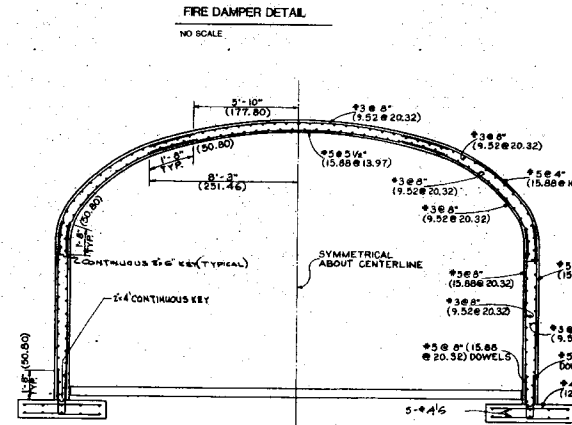
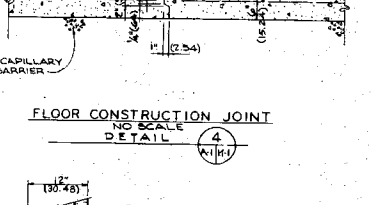
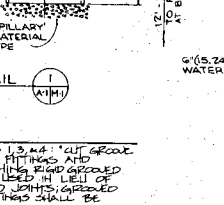
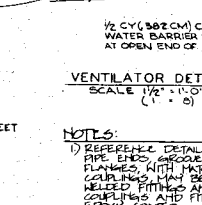
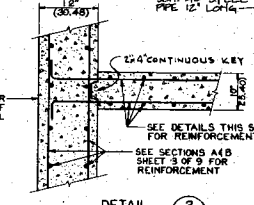
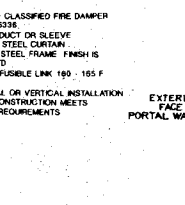
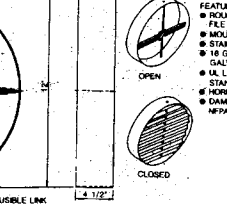
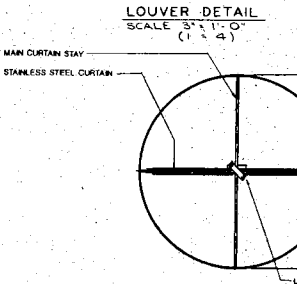
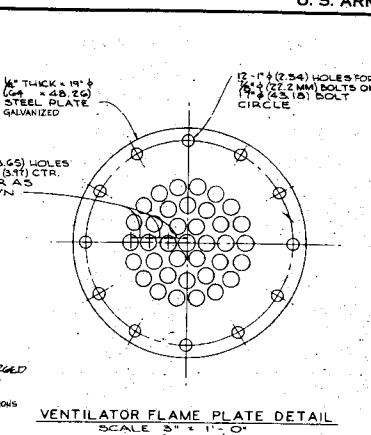
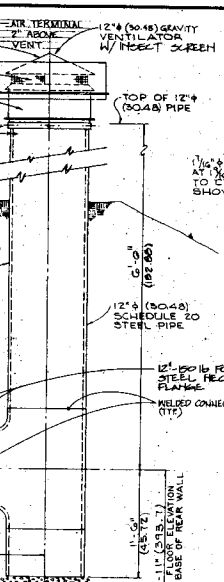
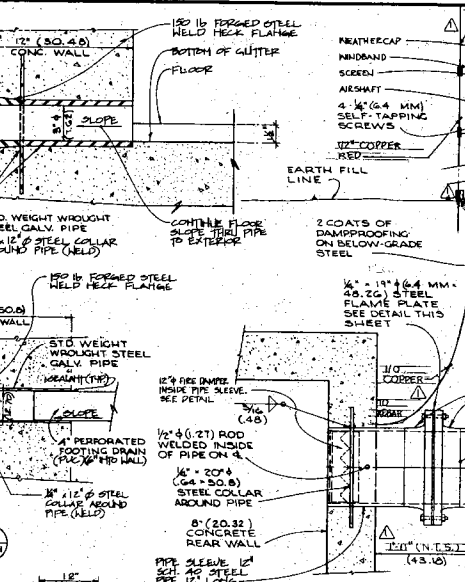
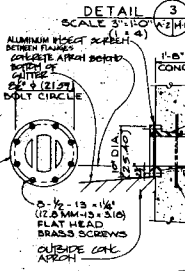
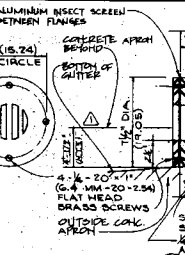
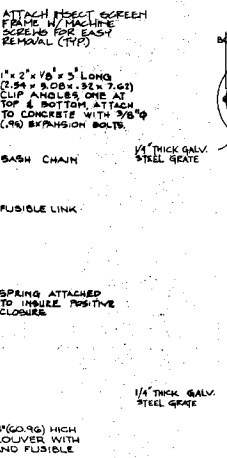
WALLACE & GATSON ASSOCIATES		DEPARTMENT OF THE ARMY	
MUNITION STORAGE IGLOOS		MUNITION STORAGE DIVISION	
PORTAL AND REAR WALLS			
PLAN, ELEVATION AND SECTIONS			
APPROVED BY: WWD	DATE: 4-26-90	APPROVED BY: JOP	DATE: 4-26-90
FOR THE DEPARTMENT OF THE ARMY		FOR THE DEPARTMENT OF THE AIR FORCE	
DRAWN BY: WWD		DRAWN BY: JOP	
CHECKED BY: JOP		CHECKED BY: JOP	
SCALE: 1/4"=1'-0"		SCALE: 1/4"=1'-0"	
SHEET NO. 8467		SHEET NO. 219-25-321	
OF 11		OF 11	



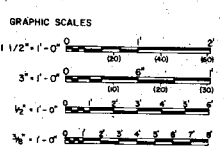
EXTERIOR



INTERIOR

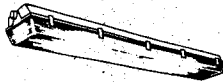


NOTES:  
 1) REFERENCE DETAILS 1, 3, 4, 1 OUT ABOVE PIPE ENDS. GROOVED FITTINGS AND FLANGES WITH MACHING RIGID GROOVED COLLARS MAY BE USED IN LIEU OF WELDED FITTINGS AND JOINTS. GROOVED COLLARS AND JOINTS SHOULD BE EPXY COATED.



AS-BUILT	
APPROVED	REVISIONS
WALLACE & NEWMAN - ASSOCIATES <b>WNA</b>	DEPARTMENT OF THE ARMY OFFICE OF THE CHIEF OF ENGINEERS MILITARY CONSTRUCTION - ENGINEERING BRIGADE WASHINGTON, D. C.
DRAWN BY: <b>WHD</b>	LIAKE AIR FORCE BASE <b>ARIZONA</b>
TRACED BY: <b>WHD</b>	<b>MUNITION STORAGE IGLONS</b>
DESIGNED BY: <b>JDP</b>	MISCELLANEOUS DETAILS
APPROVED BY: <b>JDP</b>	
DATE: 4-26-90	SCALE: AS NOTED M-1 218-25-321 SHEET 9 OF 11

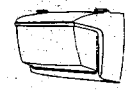
# FUNCTION ANALYSIS - VE PAYS



**TYPE 312**  
 4-Fluor Fluorescent Light  
 See 10-00000  
 Enclosed and Gasketed, Appropriate Finemount Fixture  
 for Surface or Pendant Mounting

Fixture shall conform to UL 1570 and shall be suitable for use in wet locations. Fixture shall have one-piece housing of unidirectional plastic or reinforced fiberglass. Housing body shall have an integral, die-formed, adjustable sheet channel with cover for panel or recessed lighting and contain electrical compartment. The sheet channel and cover shall contain a heat insulating material before application of sheet cover, which shall consist of baked white enamel or porcelain enamel. The lens shall be one piece of high impact polycarbonate material and shall have smooth, curved surface and stippled or pitted interior surface. The lens shall be secured to the housing with captive retained plastic or stainless steel spring latches. A continuous gasket shall be provided to form a vapor seal between the lens and the fixture body. All openings in the housing for mounting, conduit, etc., shall be capable of forming a vapor-tight seal. Billings shall be cast weather type for mounting temperature down to minus 20 degrees F. Fixture shall be provided.

10/10



**TYPE 302**  
 High Intensity Discharge Fixture for Exterior Wall Mounting,  
 Medium Output  
 100 Watt High Pressure Sodium Type

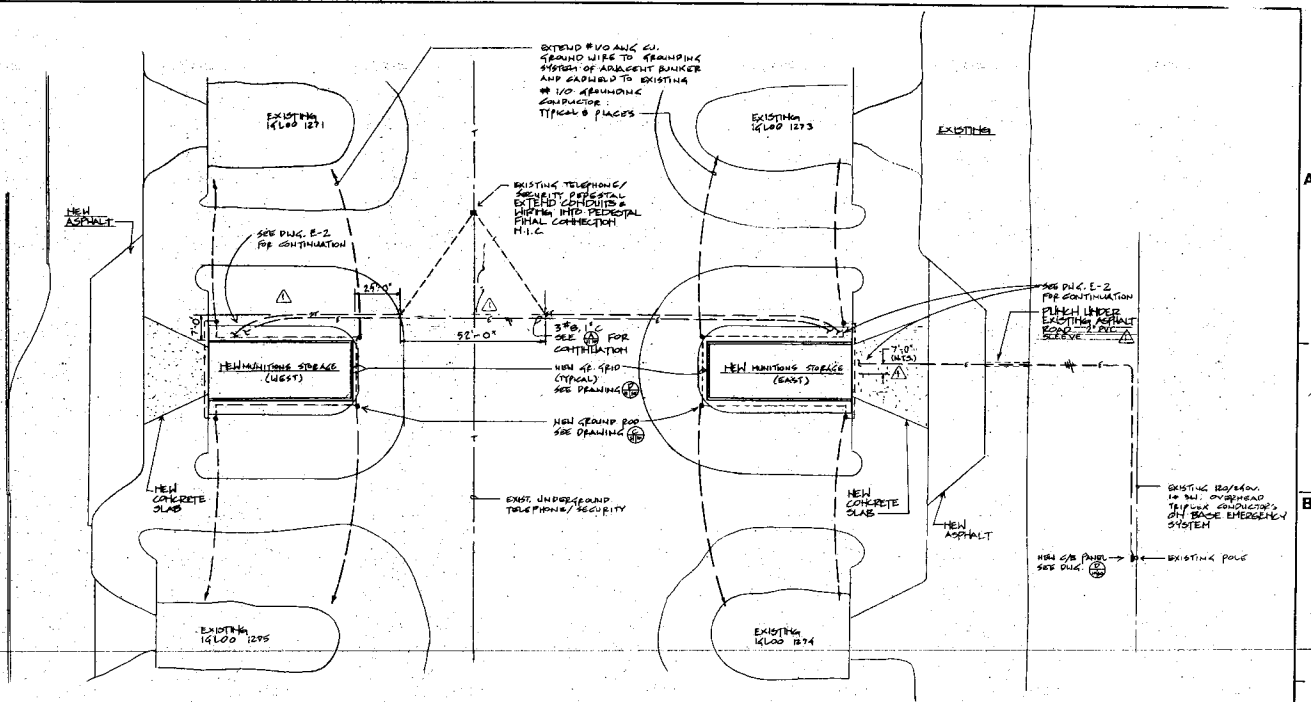
Fixture shall conform to UL 1572 for use in wet locations. The fixture housing, door assembly, and hardware shall be die-cast aluminum. The door assembly shall have integral cast aluminum hinges. The door assembly shall be held securely in the fixture housing with a stainless steel safety stress when the door is in the open position. The door assembly shall be held tightly against a weather gasket between the fixture door and housing by stainless steel latches or with brass cap screw action when the fixture door is closed. The reflector shall be prismatic hemispherical glass. The reflector shall be gasketed and securely held in the door frame, but shall be easily removed for replacement with a new reflector. The reflector shall be aluminum with the manufacturer's standard commercial product finish suitable for light source provided. The lampholder shall be made from flame resistant material and shall be held in place. The fixture shall have finished aluminum finish and zinc nicrate layer protection on outside. Gasket material shall be provided in the door for weather protection and weathering. Billings shall be of the high power factor type. Billings shall be of the standard outdoor administration type for outdoor use and shall be the regulating type for high pressure sodium lamps. Billings shall start and operate under all ambient temperatures from minus 20 degrees F to 125 degrees F. The fixture shall be provided.

10/10

NEW PANEL NO.	TYPE	VOLTAGE	120V/200V/120/240	120V/240V	200V/240V
1	SECURITY	120V	10	10	10
2	SECURITY	120V	10	10	10
3	SECURITY	120V	10	10	10
4	SECURITY	120V	10	10	10
5	SECURITY	120V	10	10	10
6	SECURITY	120V	10	10	10
7	SECURITY	120V	10	10	10
8	SECURITY	120V	10	10	10
9	SECURITY	120V	10	10	10
10	SECURITY	120V	10	10	10
11	SECURITY	120V	10	10	10
12	SECURITY	120V	10	10	10
13	SECURITY	120V	10	10	10
14	SECURITY	120V	10	10	10
15	SECURITY	120V	10	10	10
16	SECURITY	120V	10	10	10
17	SECURITY	120V	10	10	10
18	SECURITY	120V	10	10	10
19	SECURITY	120V	10	10	10
20	SECURITY	120V	10	10	10
21	SECURITY	120V	10	10	10
22	SECURITY	120V	10	10	10
23	SECURITY	120V	10	10	10
24	SECURITY	120V	10	10	10
25	SECURITY	120V	10	10	10
26	SECURITY	120V	10	10	10
27	SECURITY	120V	10	10	10
28	SECURITY	120V	10	10	10
29	SECURITY	120V	10	10	10
30	SECURITY	120V	10	10	10
31	SECURITY	120V	10	10	10
32	SECURITY	120V	10	10	10
33	SECURITY	120V	10	10	10
34	SECURITY	120V	10	10	10
35	SECURITY	120V	10	10	10
36	SECURITY	120V	10	10	10
37	SECURITY	120V	10	10	10
38	SECURITY	120V	10	10	10
39	SECURITY	120V	10	10	10
40	SECURITY	120V	10	10	10
41	SECURITY	120V	10	10	10
42	SECURITY	120V	10	10	10
43	SECURITY	120V	10	10	10
44	SECURITY	120V	10	10	10
45	SECURITY	120V	10	10	10
46	SECURITY	120V	10	10	10
47	SECURITY	120V	10	10	10
48	SECURITY	120V	10	10	10
49	SECURITY	120V	10	10	10
50	SECURITY	120V	10	10	10
51	SECURITY	120V	10	10	10
52	SECURITY	120V	10	10	10
53	SECURITY	120V	10	10	10
54	SECURITY	120V	10	10	10
55	SECURITY	120V	10	10	10
56	SECURITY	120V	10	10	10
57	SECURITY	120V	10	10	10
58	SECURITY	120V	10	10	10
59	SECURITY	120V	10	10	10
60	SECURITY	120V	10	10	10
61	SECURITY	120V	10	10	10
62	SECURITY	120V	10	10	10
63	SECURITY	120V	10	10	10
64	SECURITY	120V	10	10	10
65	SECURITY	120V	10	10	10
66	SECURITY	120V	10	10	10
67	SECURITY	120V	10	10	10
68	SECURITY	120V	10	10	10
69	SECURITY	120V	10	10	10
70	SECURITY	120V	10	10	10
71	SECURITY	120V	10	10	10
72	SECURITY	120V	10	10	10
73	SECURITY	120V	10	10	10
74	SECURITY	120V	10	10	10
75	SECURITY	120V	10	10	10
76	SECURITY	120V	10	10	10
77	SECURITY	120V	10	10	10
78	SECURITY	120V	10	10	10
79	SECURITY	120V	10	10	10
80	SECURITY	120V	10	10	10
81	SECURITY	120V	10	10	10
82	SECURITY	120V	10	10	10
83	SECURITY	120V	10	10	10
84	SECURITY	120V	10	10	10
85	SECURITY	120V	10	10	10
86	SECURITY	120V	10	10	10
87	SECURITY	120V	10	10	10
88	SECURITY	120V	10	10	10
89	SECURITY	120V	10	10	10
90	SECURITY	120V	10	10	10
91	SECURITY	120V	10	10	10
92	SECURITY	120V	10	10	10
93	SECURITY	120V	10	10	10
94	SECURITY	120V	10	10	10
95	SECURITY	120V	10	10	10
96	SECURITY	120V	10	10	10
97	SECURITY	120V	10	10	10
98	SECURITY	120V	10	10	10
99	SECURITY	120V	10	10	10
100	SECURITY	120V	10	10	10

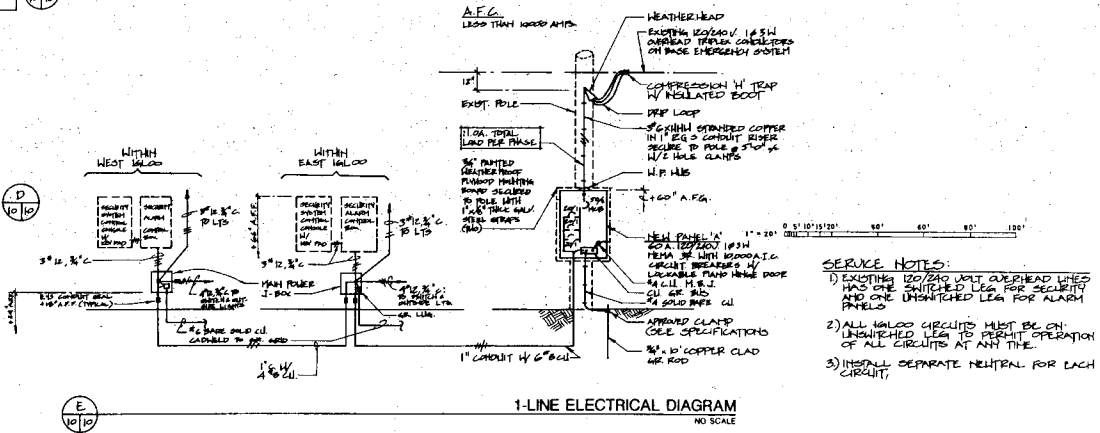
10/10

10/10



**ELECTRICAL SITE PLAN**  
 1" = 20' 0" (SEE LINEAR SCALE)

**GENERAL NOTES:**  
 1) SITE TRENCHING SHOULD BE DONE ONLY AFTER CONSULTING THE BASE CALL ENGINEER UTILITIES ENGINEER FOR EXACT LOCATION OF FACILITIES ON THIS SITE.  
 2) ALL CONDUCTORS SHALL BE COPPER.



**SERVICE NOTES:**  
 1) EXISTING 120/240 VOLT OVERHEAD LINES HAS ONE SHUTTED LEG FOR SECURITY AND ONE UNSHUTTED LEG FOR ALARM PANELS.  
 2) ALL 120V CIRCUITS MUST BE ON UNSHUTTED LEG TO PERMIT OPERATION OF ALL CIRCUITS AT ANY TIME.  
 3) INSTALL SEPARATE NEUTRAL FOR EACH CIRCUIT.

**AS-BUILT**

REVISION	DATE	DESCRIPTION
1		ISSUE REVISED AS-BUILT

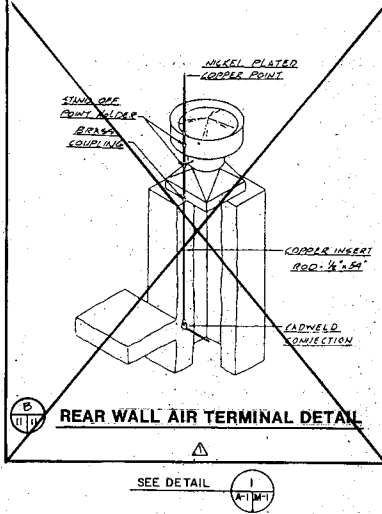
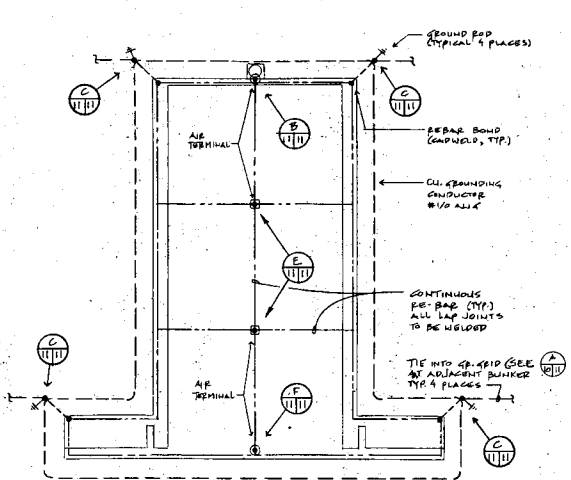
WALLACE & WATSON ASSOCIATED  
 DEPARTMENT OF THE ARMY  
 SACRAMENTO DISTRICT, CORPS OF ENGINEERS  
 SACRAMENTO, CALIFORNIA

REVISIONS: J.D.  
 DATE: J.D.  
 DRAWN BY: B.L.

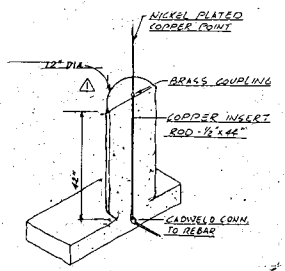
**MUNITON STORAGE IGLOOS**  
 ELECTRICAL SITE PLAN

DRAWN BY: B.L.  
 DATE: 4-20-80  
 SHEET NO: E-1 OF 1  
 PROJ NO: 219-25-321

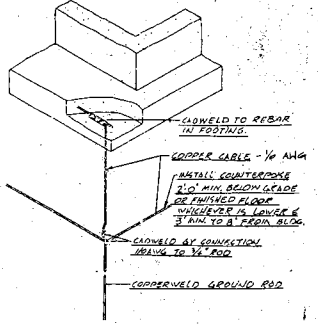
# FUNCTION ANALYSIS - VE PAYS



**LIGHTNING PROTECTION PLAN**  
EAST BUNKER SHOWN, WEST BUNKER IDENTICAL

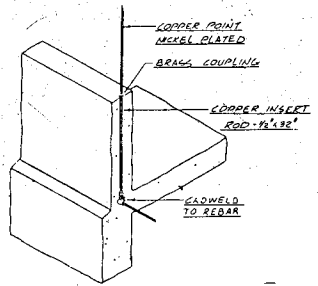


**INTERMEDIATE AIR TERMINAL DETAIL**

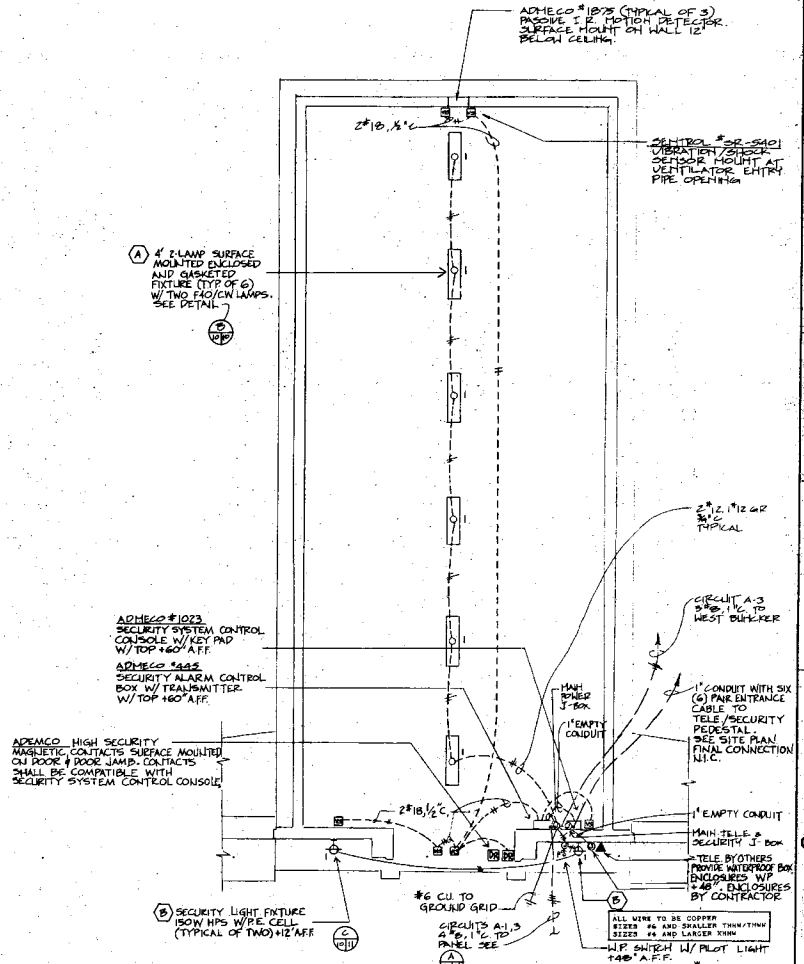


**GROUNDING CONNECTION DETAILS**

ELECTRICAL SYMBOLS	
	SINGLE POLE SWITCH, WP WEATHERPROOF
	SWITCH AND PILOT LAMP
	WALL OUTLET - TELEPHONE
	WIRE RUN TO PANEL BOARD W/3/12 TRNS/TRNS CB
	BRANCH CIRCUIT: CONCEALED IN CEILING OR WALL W/24\"/>
	BRANCH CIRCUIT: CONCEALED IN FLOOR W/312\"/>
	BRANCH CIRCUIT: EXPOSED W/412\"/>
	NUMBER OF WIRES IN CIRCUIT W/24\"/>
	L.V. PANEL: 120/240V, 15, 30A
	GROUND
	CIRCUIT BREAKER (DIAGNOSTIC)
	FRESH AIR INLET STATION
	UL6 ELECTRICAL POWER CONDUIT
	SECURITY TEL CONDUIT & W/40V LOW VOLTAGE
	MOTION DETECTOR
	INTRUSION SHOCK SENSOR
	DOOR DETECTOR



**FRONT WALL AIR TERMINAL DETAIL**



**LIGHTING, POWER AND SECURITY PLAN**  
EAST BUNKER SHOWN, WEST BUNKER SIMILAR

**NOTE:**  
FURNISH TO BASE SECURITY, ONE (1) ADMECO #400 SECURITY SYSTEM REGULATING MOTILE INSULATION & CONNECTION TO EXISTING BASE SECURITY SYSTEM N.T.C.

<b>AS-BUILT</b>	
WALLACE & WATSON - ASSOCIATES SACRAMENTO DISTRICT, CORPS OF ENGINEERS SACRAMENTO, CALIFORNIA	
NUMBER: J.D. DRAWN: J.D. CHECKED: B.L.	DEPARTMENT OF THE ARMY ARIZONA <b>MUNITION STORAGE IGLOOS</b> ELECTRICAL PLAN & DETAILS
DATE: 4-20-90	E-2 219-25-321 110F11

1279/1280