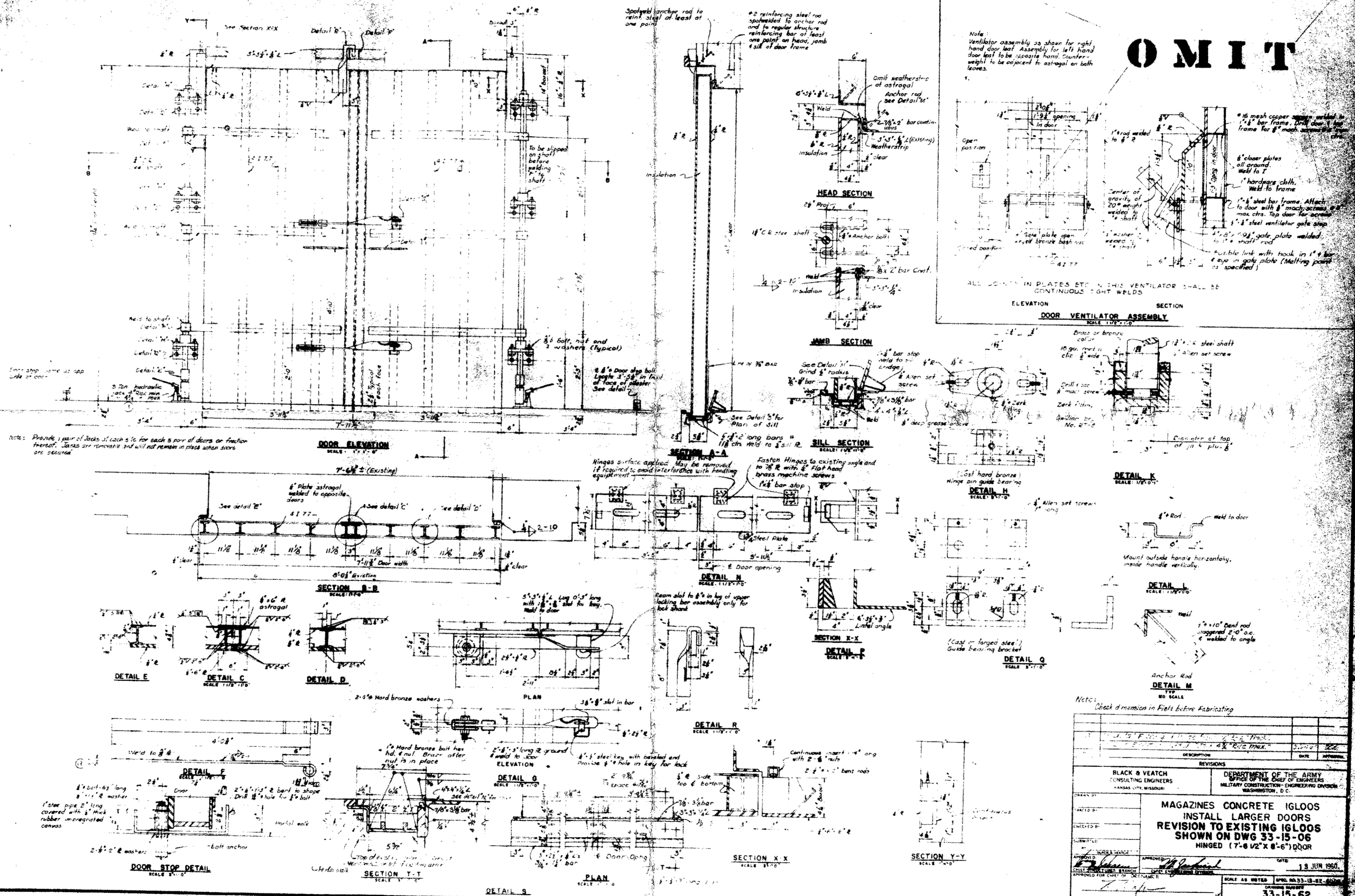


BLACK & VEATCH CONSULTING ENGINEERS KANSAS CITY, MO.	DEPARTMENT OF THE ARMY U.S. ARMY ENGINEERING CENTER FORT BELVOIR, COLORADO
DESIGNED BY: _____ CHECKED BY: _____ DATE: _____	MAGAZIN'S CONCRETE PIGS INSTALL LARGER PIGS REVISION TO EXISTING PIGS SLIDING (10'-0" x 10'-6" x 12'-0" x 10'-0")
DATE: 11/22/62	THIS DWG FORMERLY YT-109

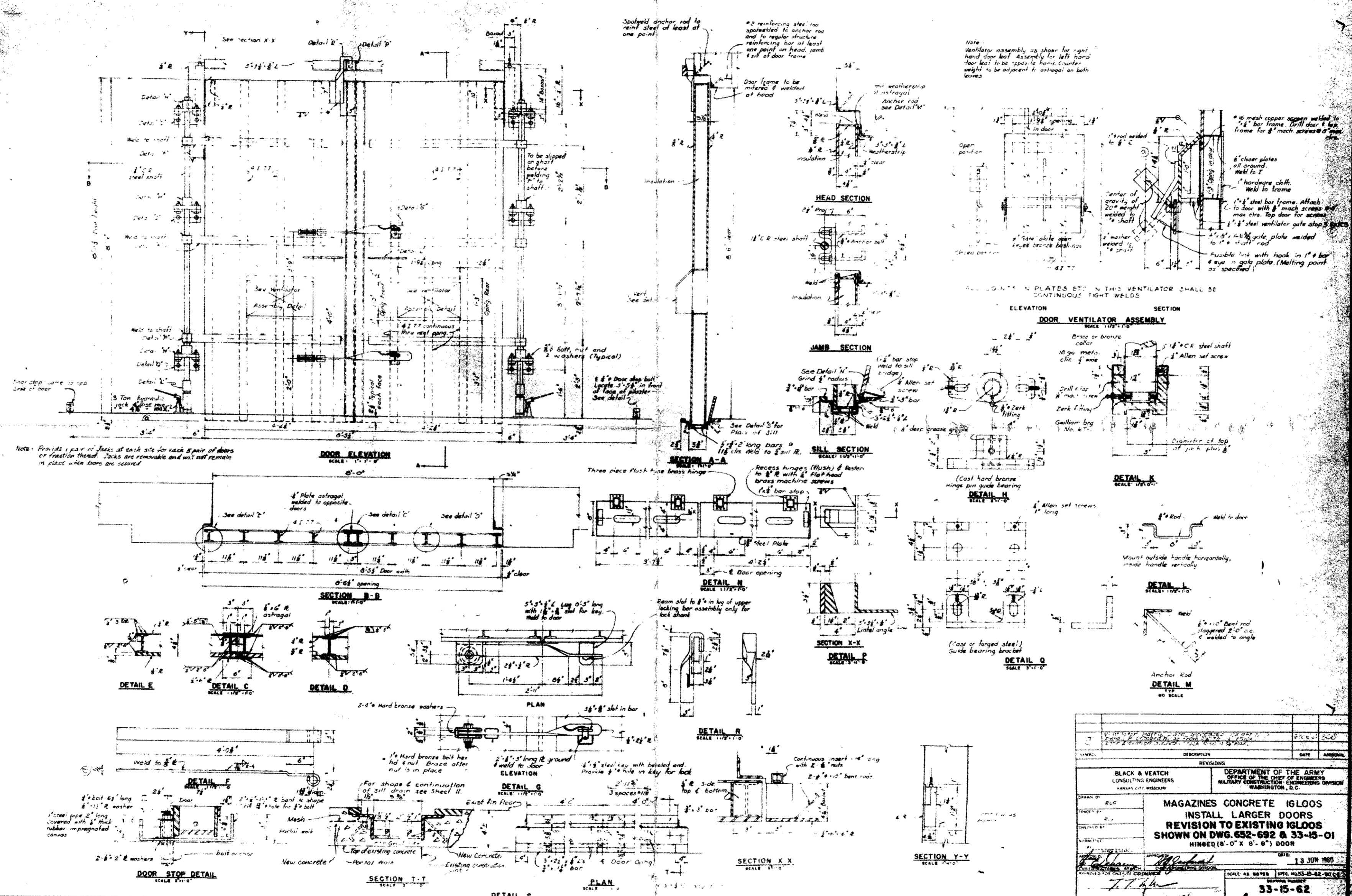


THIS SHEET REPRODUCED FROM SHEET 10 OF DRAWING 33-33-01

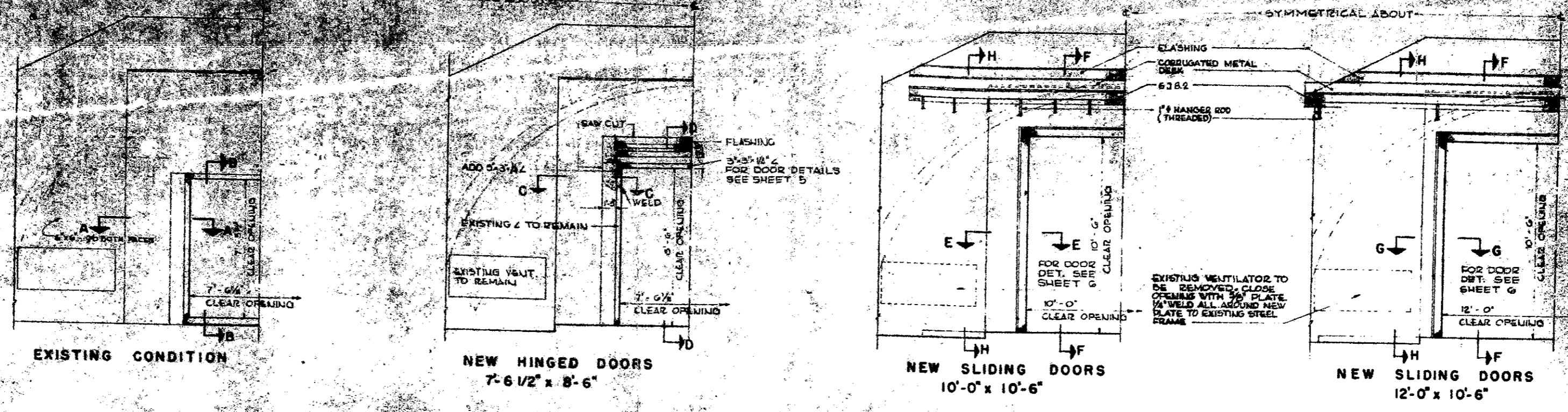
FILMED

REVISIONS		DATE	INITIALS

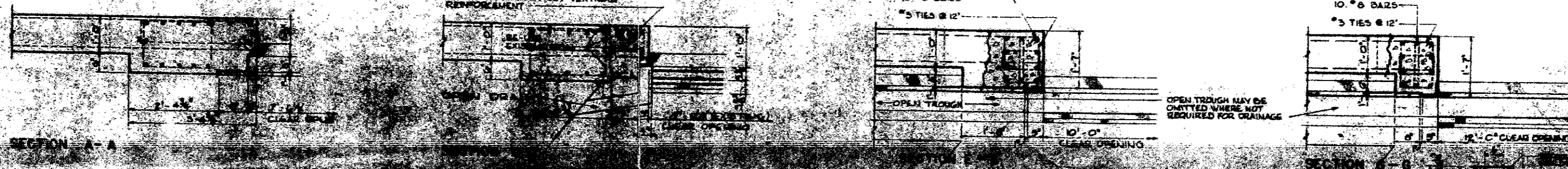
<p>BLACK & VEATCH CONSULTING ENGINEERS 1035 L ST. WASHINGTON</p>	<p>DEPARTMENT OF THE ARMY OFFICE OF THE CHIEF OF ENGINEERS MILITARY CONSTRUCTION ENGINEERING DIVISION WASHINGTON, D. C.</p>
<p>MAGAZINES CONCRETE IGLOOS INSTALL LARGER DOORS REVISION TO EXISTING IGLOOS SHOWN ON DWG 33-15-06 HINGED (7'-6 1/2" X 8'-6") DOOR</p>	
<p>DATE: 13 JUN 1960 SCALE AS SHOWN SHEET NO. 33-15-06</p>	<p>DATE: 13 JUN 1960 SCALE AS SHOWN SHEET NO. 33-15-06</p>
<p>SHEET 5</p>	



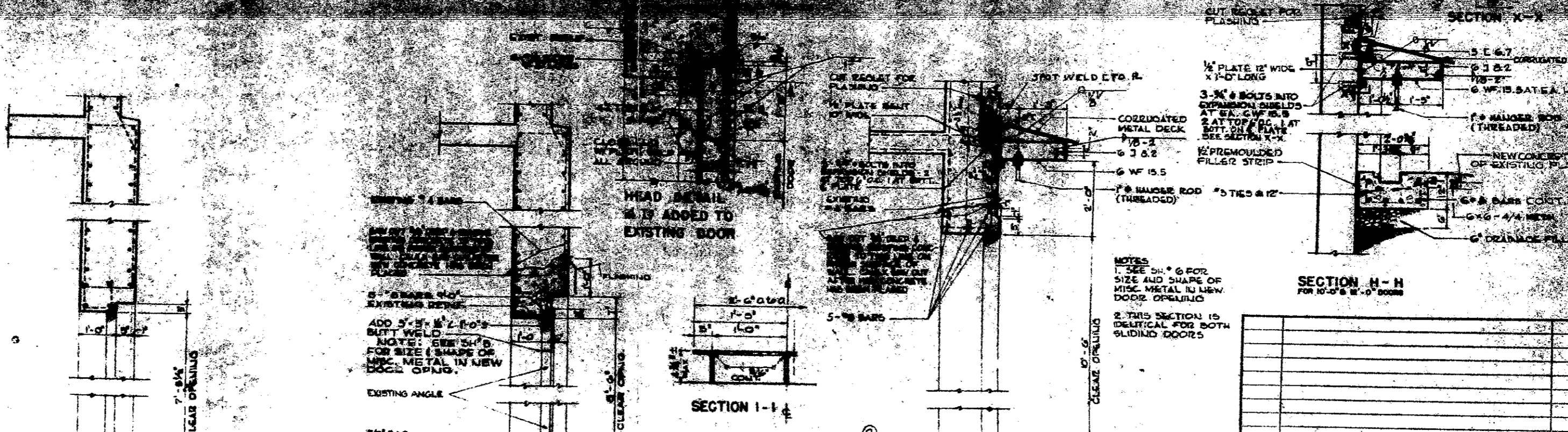
ELEVATIONS
SCALE: 3/8" = 1'-0"



JAMBS
SCALE: 3/8" = 1'-0"



HEADS
SCALE: 3/8" = 1'-0"



SILLS
SCALE: 3/8" = 1'-0"

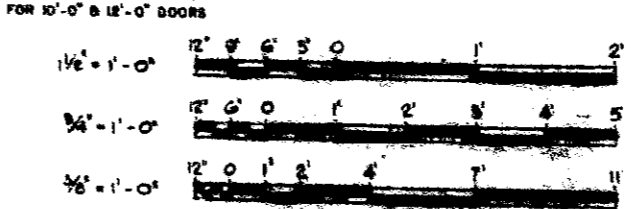
GENERAL NOTES

- THIS SHEET TO BE USED FOR MODIFICATION OF ISGLOS CONSTRUCTED FROM DRAWING 33-15-06
- GROUND ALL METAL INCLUDING REINFORCING TO EXISTING LIGHTNING PROTECTION SYSTEM
- EXTEND ALL BY STRIP REINFORCING INTO NEW CONCRETE WHEN PRACTICABLE

ALTERNATE FOR MODIFYING EXISTING DOOR
SCALE: 1/2" = 1'-0"

NOTE: THIS ALTERNATE IS USED ONLY WHEN PLUMB SILL IS NOT AVAILABLE BY USING SERVICE. PROVIDE RAMP IN 2 SECTIONS 2'-0" x 6'-0" LONG

GRAPHIC SCALES

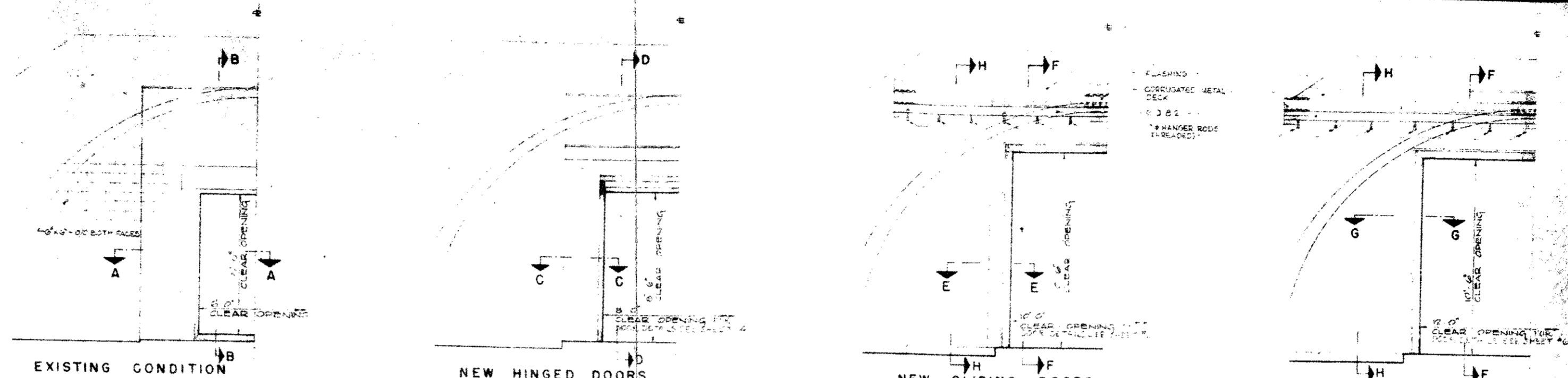


NO.	DESCRIPTION	DATE	BY	CHECKED
1	SLOPE OF SILL TROUGH DELETED SECT. F-F.	6/24/60	J.E.T.	

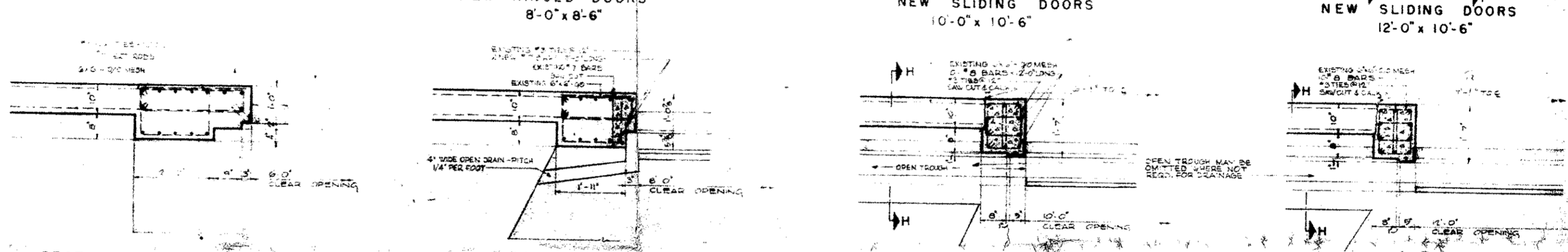
DESIGNED BY	J. E. T.	DATE	13 JUN 1960
TRACED BY	T. O. D.		
CHECKED BY			
APPROVED BY			
APPROVED BY			
DATE	10 May 1960		

LURIN, MORGAN & ASSOCIATES ARCHITECTS & ENGINEERS HARRISBURG, VA.	DEPARTMENT OF THE ARMY OFFICE OF THE CHIEF OF ENGINEERS MILITARY CONSTRUCTION - ENGINEERING DIVISION WASHINGTON, D.C.
MAGAZINES CONCRETE IGLOOS INSTALL LARGER DOORS	
REVISION TO EXISTING IGLOOS SHOWN ON DWG 33-15-06	
DRAWING NO. 33-15-06	
SHEET 3	

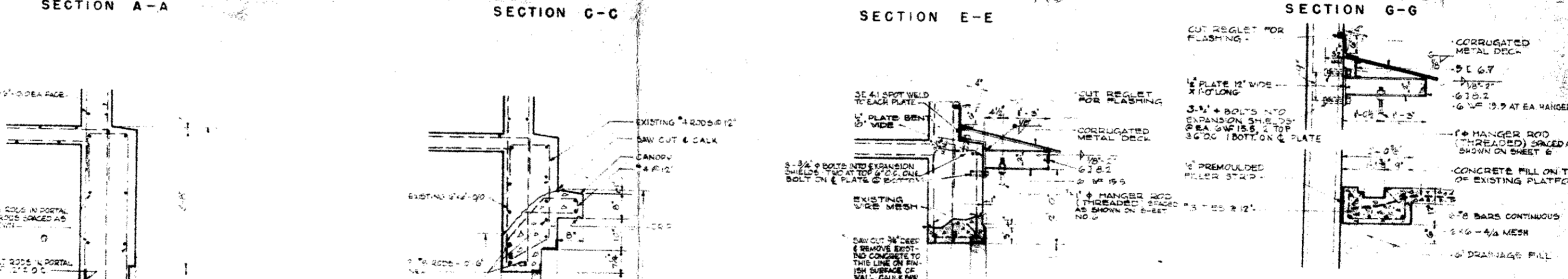
ELEVATIONS
SCALE 3/8" = 1'-0"



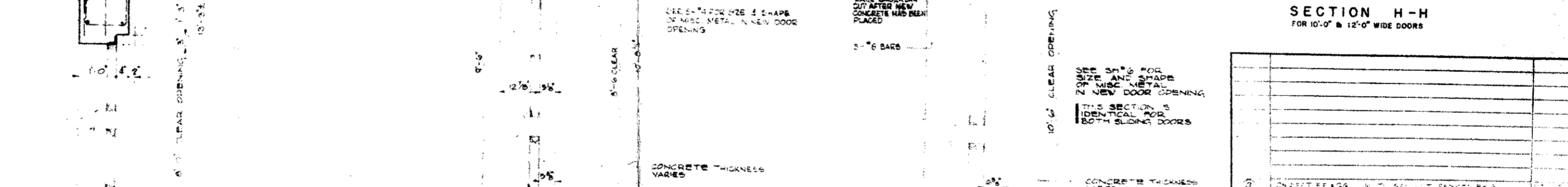
JAMBS
SCALE 3/4" = 1'-0"



HEADS
SCALE 3/4" = 1'-0"

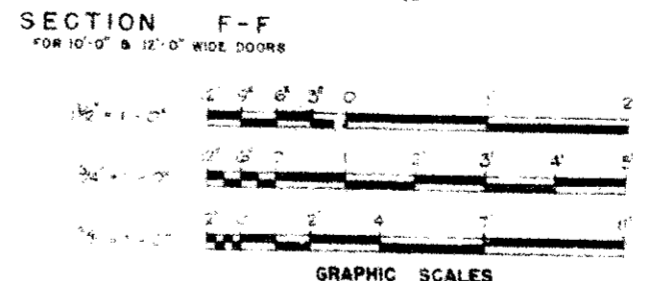


SILLS
SCALE 3/4" = 1'-0"



GENERAL NOTES

- THIS SHEET IS TO BE USED IN CONNECTION WITH DRAWING NO. 33-15-01.
- SECOND ALL METAL AND WOODWORKING SHALL BE AS SHOWN ON DRAWING NO. 33-15-01.
- REFER TO ALL EXISTING CONDITIONS AND NEW CONSTRUCTION WHERE INDICATED.



SYMBOL	DESCRIPTION	DATE	APPROVAL

LUBLIN, McGAUGHY & ASSOCIATES
 ARCHITECTS & ENGINEERS
 NORFOLK, VA. WASHINGTON, D. C.

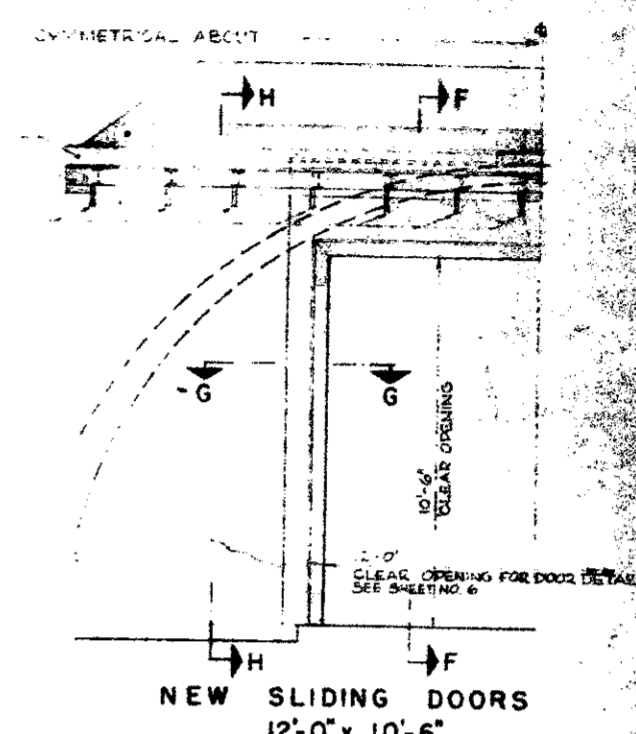
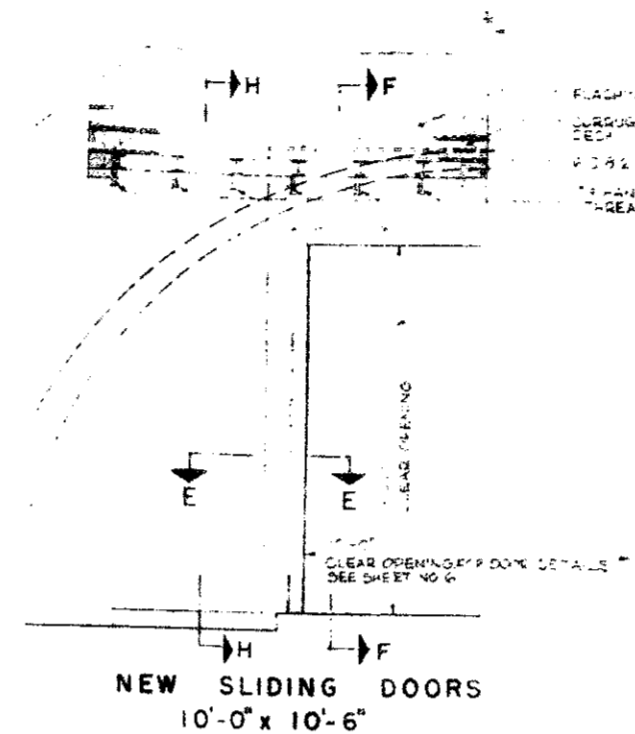
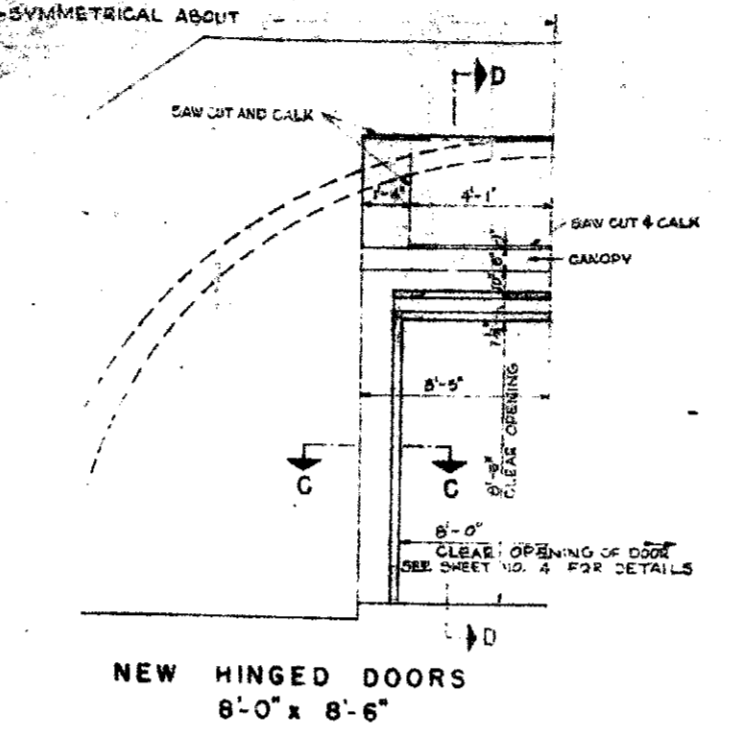
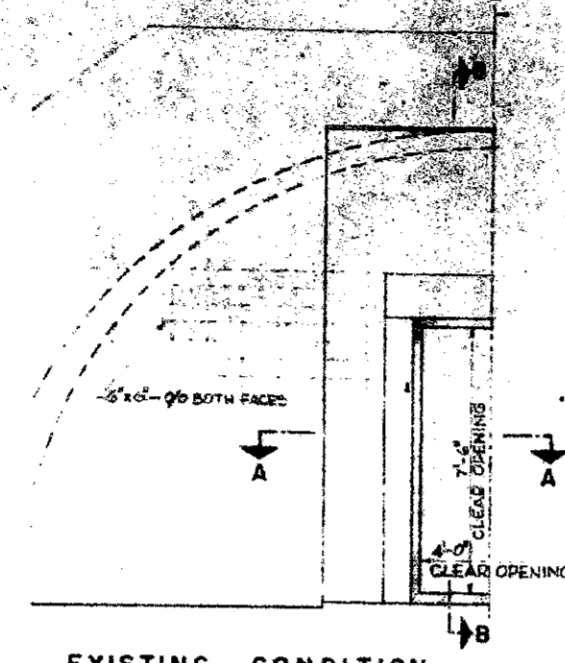
DEPARTMENT OF THE ARMY
 OFFICE OF THE CHIEF OF ENGINEERS
 MILITARY CONSTRUCTION - ENGINEERING DIVISION
 WASHINGTON, D. C.

DRAWN BY: TOD
TRACED BY: TOD
CHECKED BY: TOD
QUALITY CONTROL: TOD
APPROVED BY: [Signature]
DATE: 28 JUN 1962

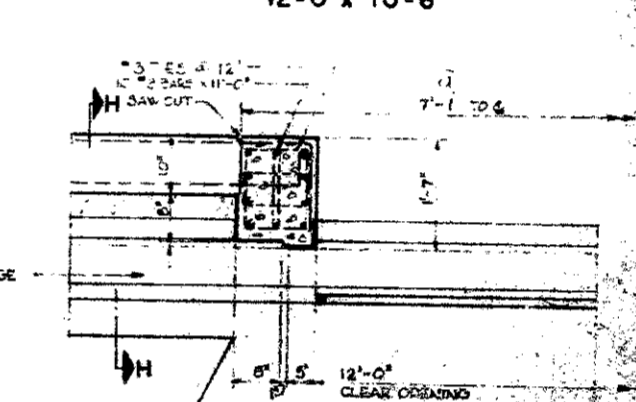
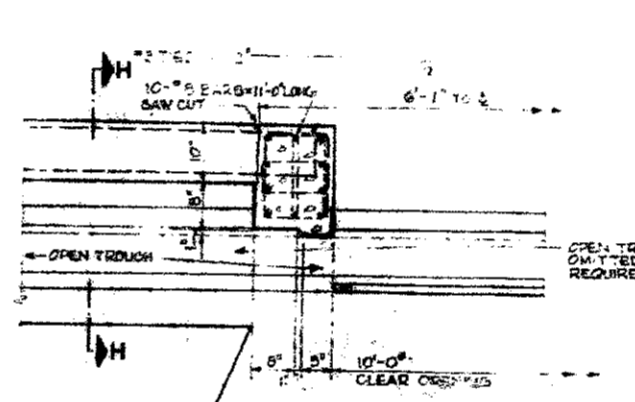
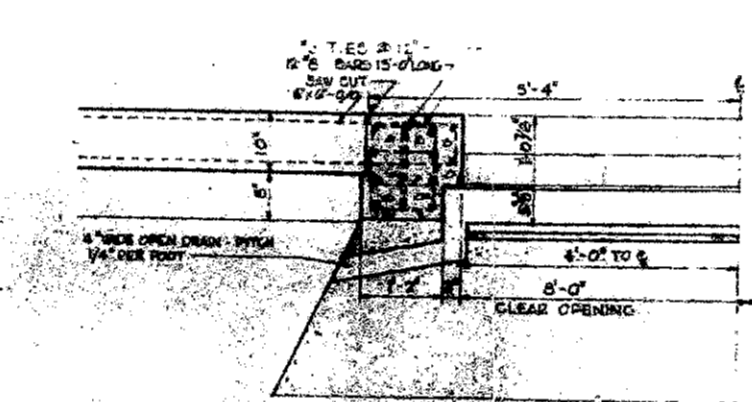
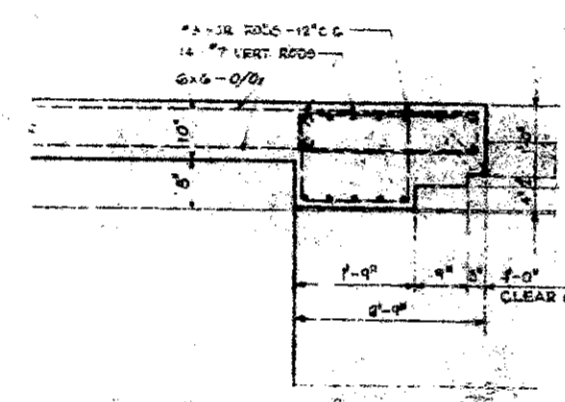
MAGAZINES CONCRETE IGLOOS
INSTALL LARGER DOORS
REVISION TO EXISTING IGLOOS
SHOWN ON DRAWING 33-15-01

SCALE AS NOTED AND NO. 33-15-62-80-CE
 SHEET NUMBER
33-15-62
 SHEET 2

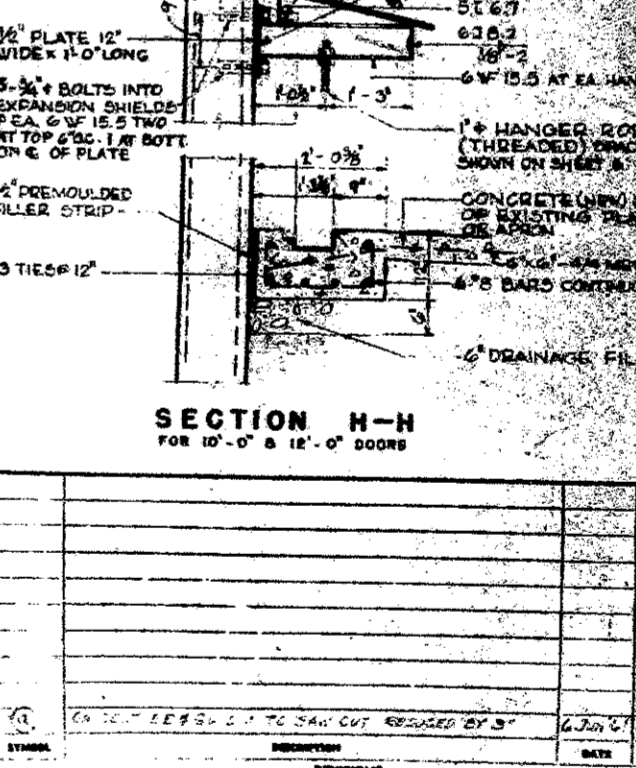
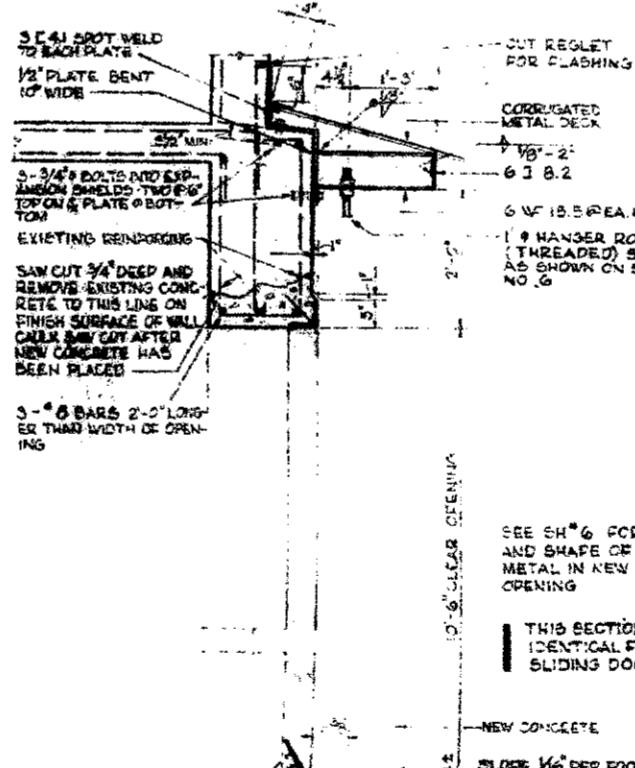
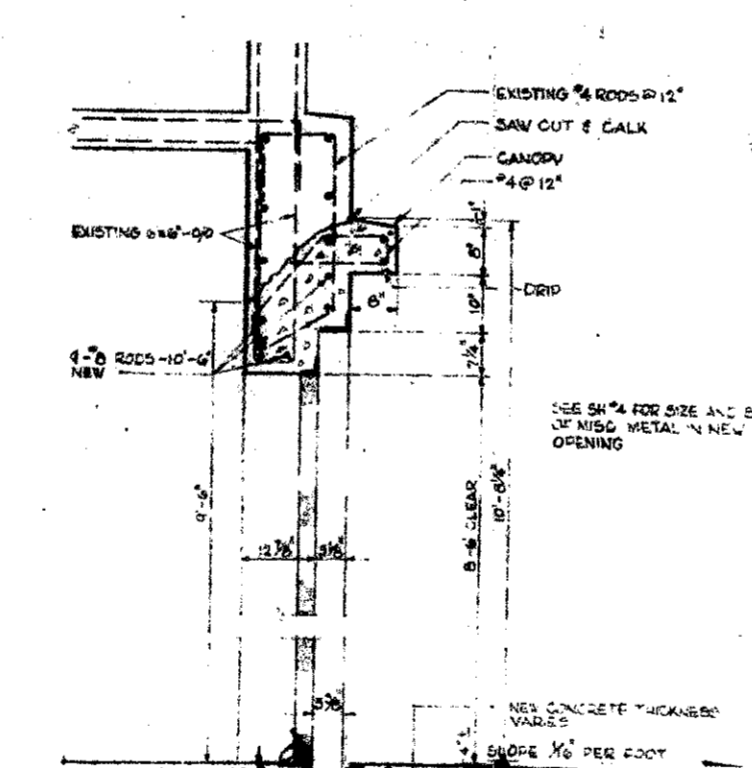
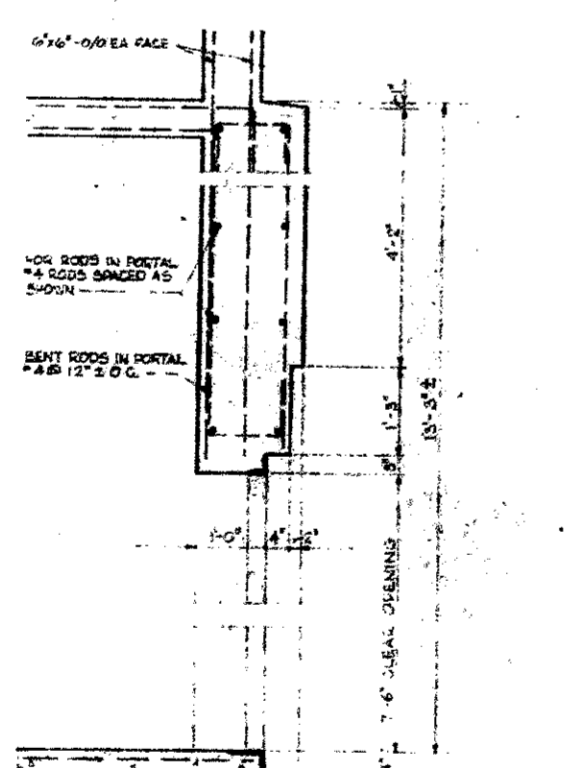
ELEVATIONS
SCALE: 3/8" = 1'-0"



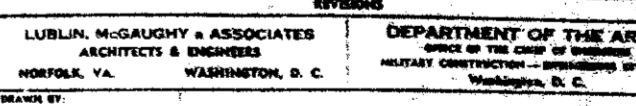
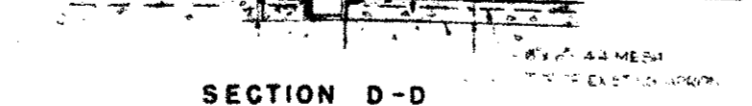
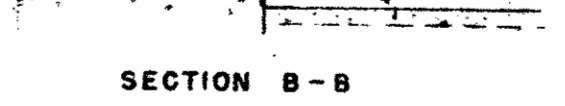
JAMBS
SCALE: 3/4" = 1'-0"



HEADS
SCALE: 3/4" = 1'-0"

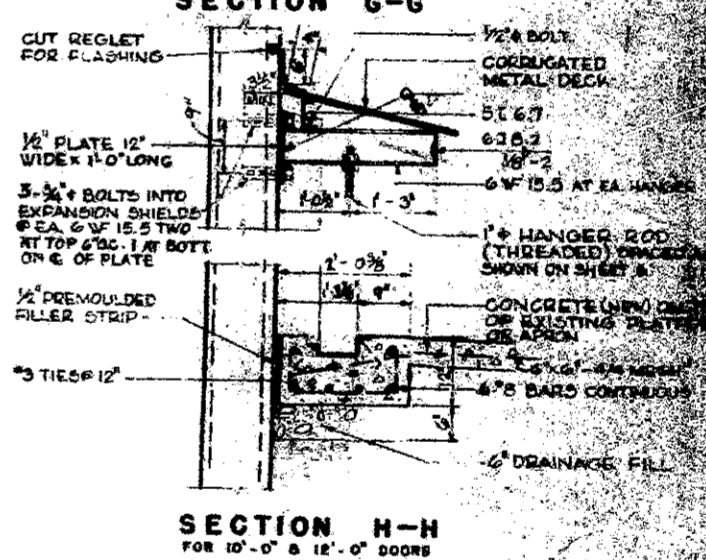
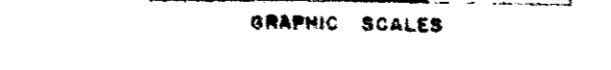


SILLS
SCALE: 3/4" = 1'-0"



GENERAL NOTES

- THIS SHEET TO BE USED FOR MODIFICATION OF SPOON CONSTRUCTION FROM DRAWING 652-686 TO 652-692.
- ROUND ALL METAL INCLUDING REFER TO EXISTING UNIFORM PROTECTION SYSTEM.
- SLIP ALL EXISTING REINFORCING INTO NEW CONCRETE WHERE PRACTICABLE.



NO.	REVISIONS	DATE

LUBLIN, MCGOUGH & ASSOCIATES ARCHITECTS & ENGINEERS NORFOLK, VA.

DEPARTMENT OF THE ARMY OFFICE OF THE CHIEF OF ENGINEERS MILITARY CONSTRUCTION - Operations Division Washington, D. C.

**MAGAZINES CONCRETE IGLOOS
INSTALL LARGER DOORS**

**REVISION TO EXISTING IGLOOS
SHOWN ON DWGS. 652-686 TO 692**

DATE: 13 JUN 1960

SCALE: AS NOTED (SEE DWG. 652-686-42-10) 33-15-62