

NOT FOR  
CONSTRUCTION

911 Central Parkway N., Suite 425 San Antonio, TX 78323  
501 North Broadway, St. Louis, Missouri 63102-2121

Revision:  
Date: By: Description:

**AIR FORCE CENTER FOR ENGINEERING AND THE  
ENVIRONMENT (AFCEE)  
FACILITIES DYNAMIC PROTOTYPES DESIGN FOR  
DORMITORIES**

Scales: 1/4" = 1'-0"

Jacobs Project No.: FDWD1301

Drawing Title:

**PLANS/ AXON**

Date: 06 MARCH 2009

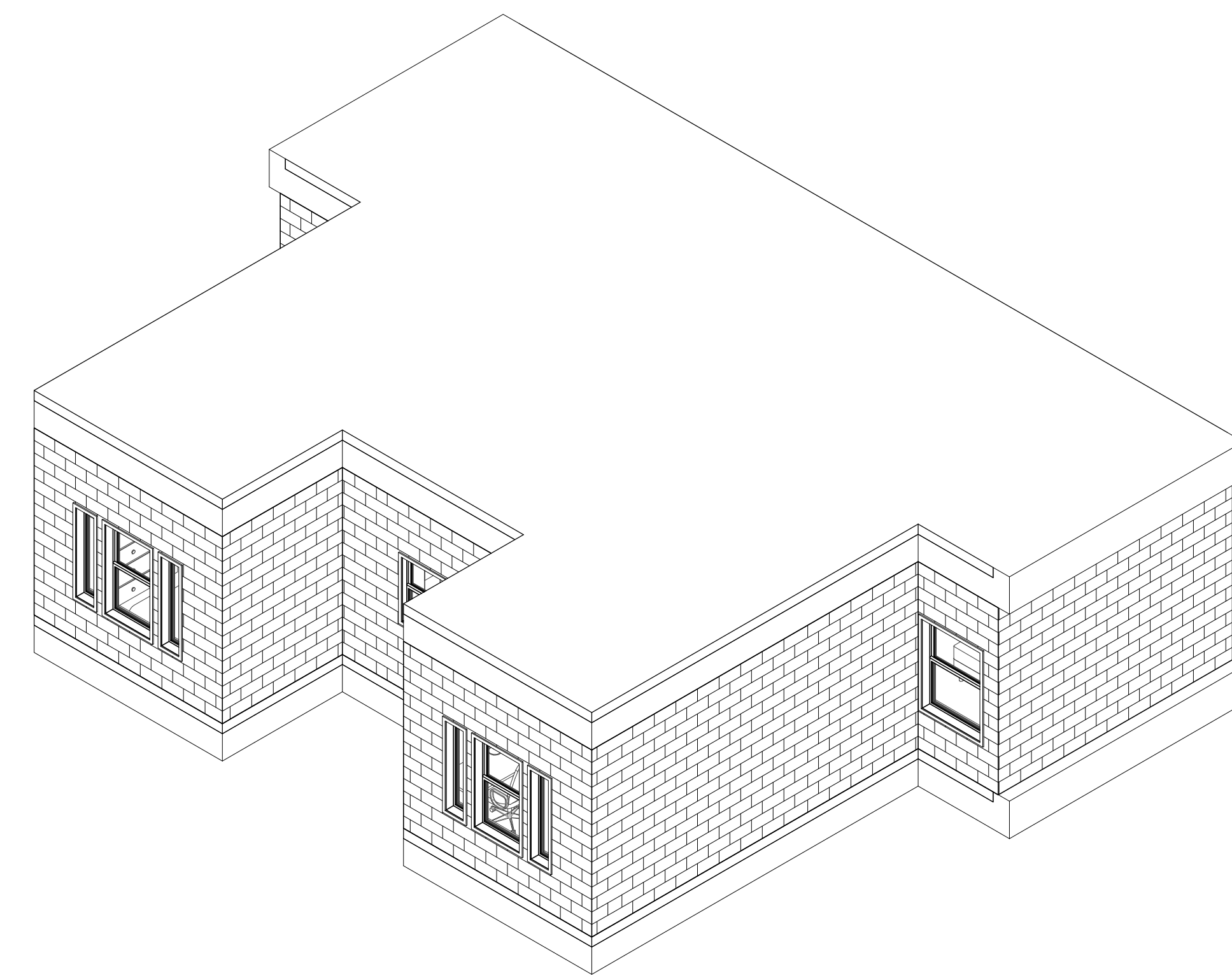
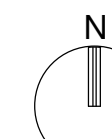
Designed By: Designer

Drawn By: Author

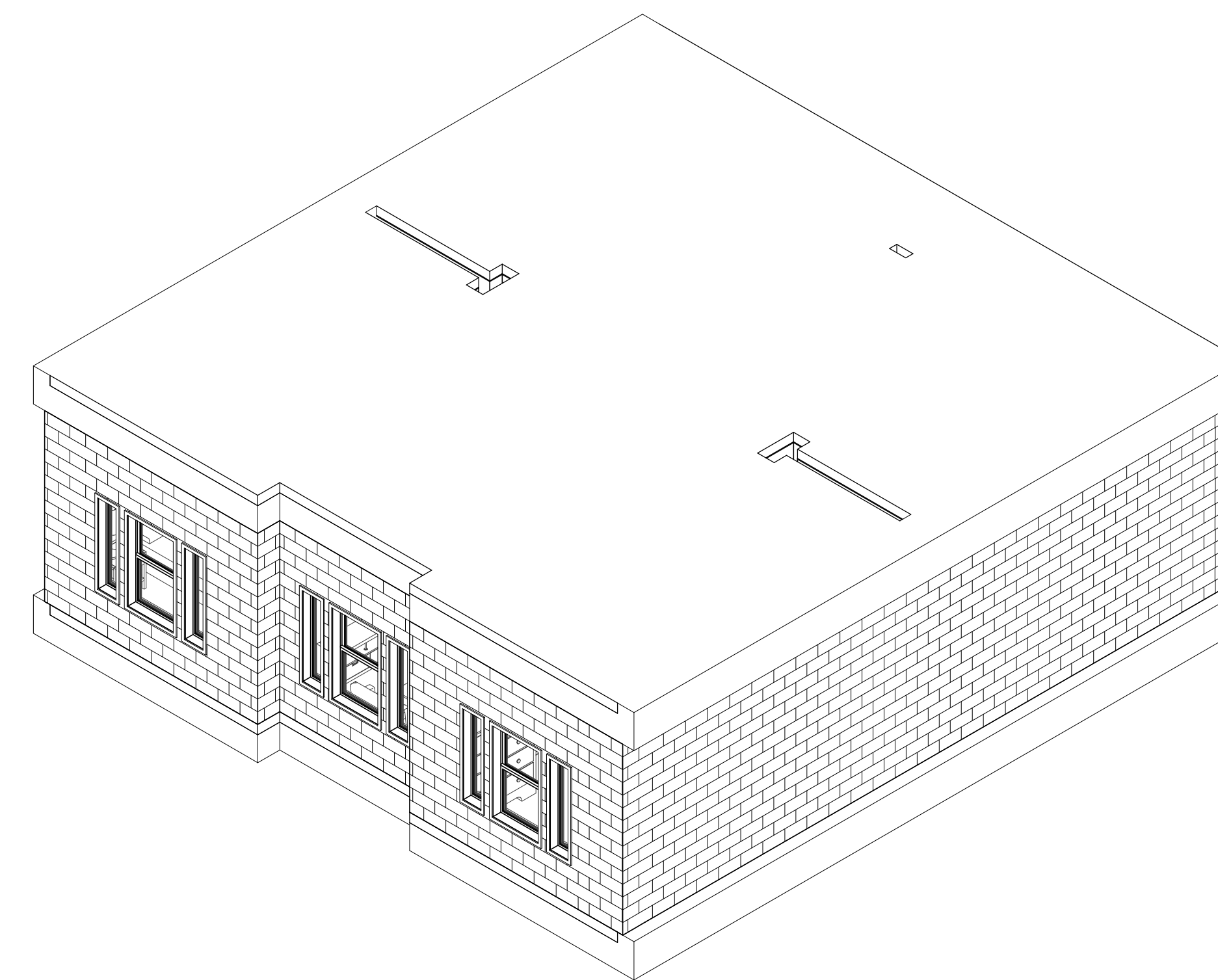
Checked By: Checker

Drawing No.:

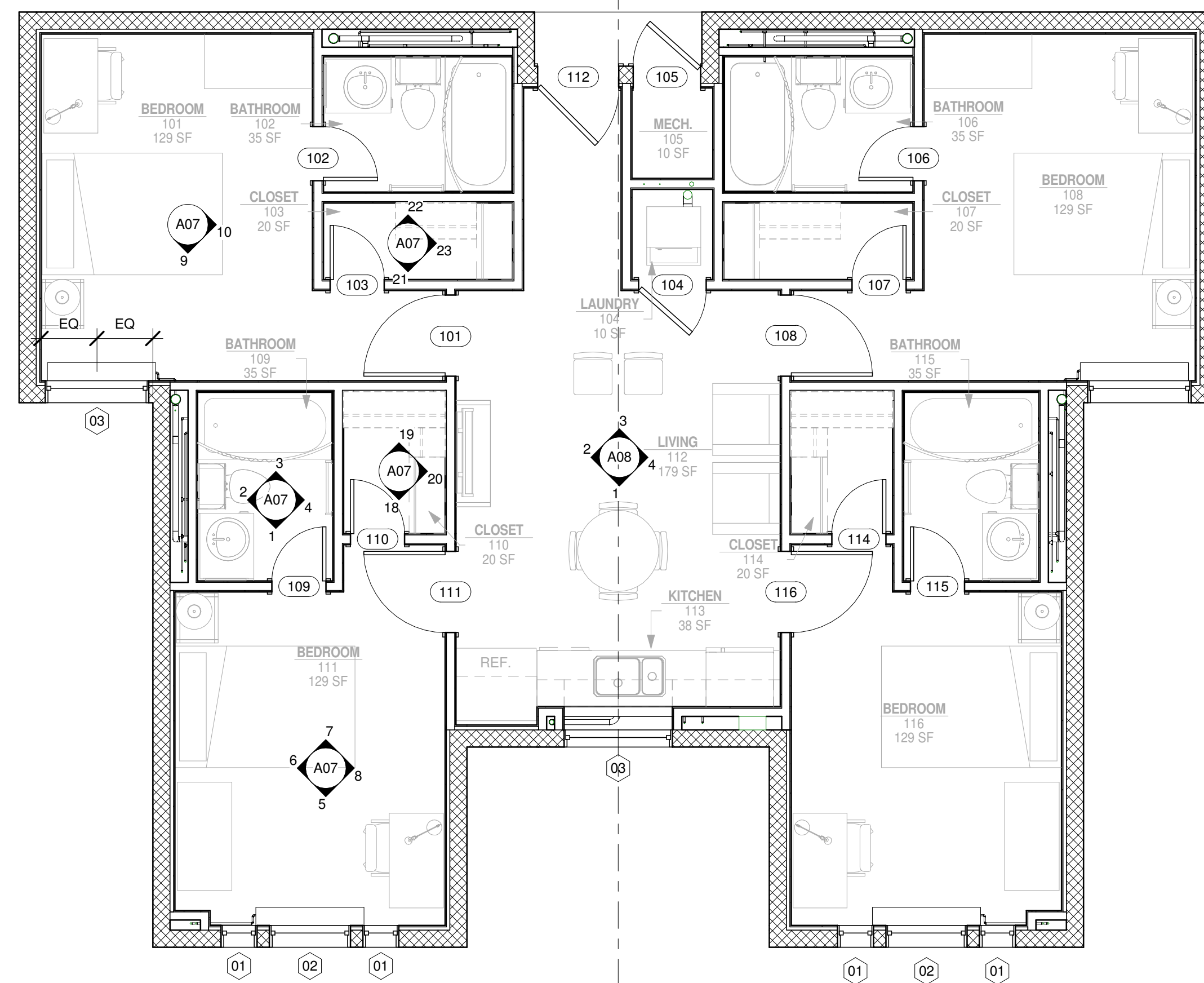
**A01**



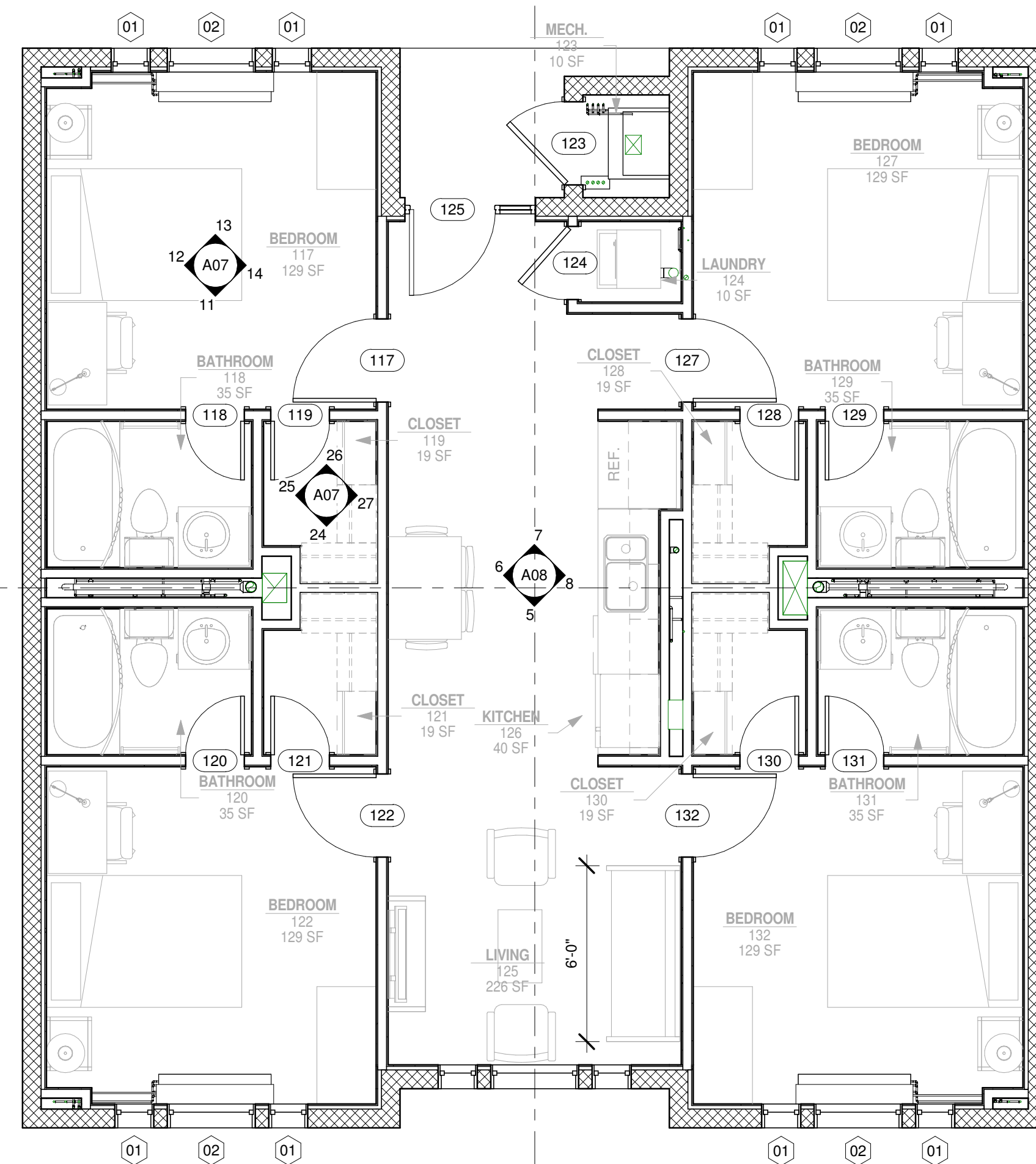
③ UNIT A



④ UNIT B



① UNIT A  
1/4" = 1'-0"



② UNIT B  
1/4" = 1'-0"

**AIR FORCE CENTER FOR ENGINEERING AND THE ENVIRONMENT (AFCEE) FACILITIES DYNAMIC PROTOTYPES DESIGN FOR DORMITORIES**

Scales: 1/4" = 1'-0"

Jacobs Project No.: FDWD1301

Drawing Title:

**PLANS/ AXON**

Date: 06 MARCH 2009

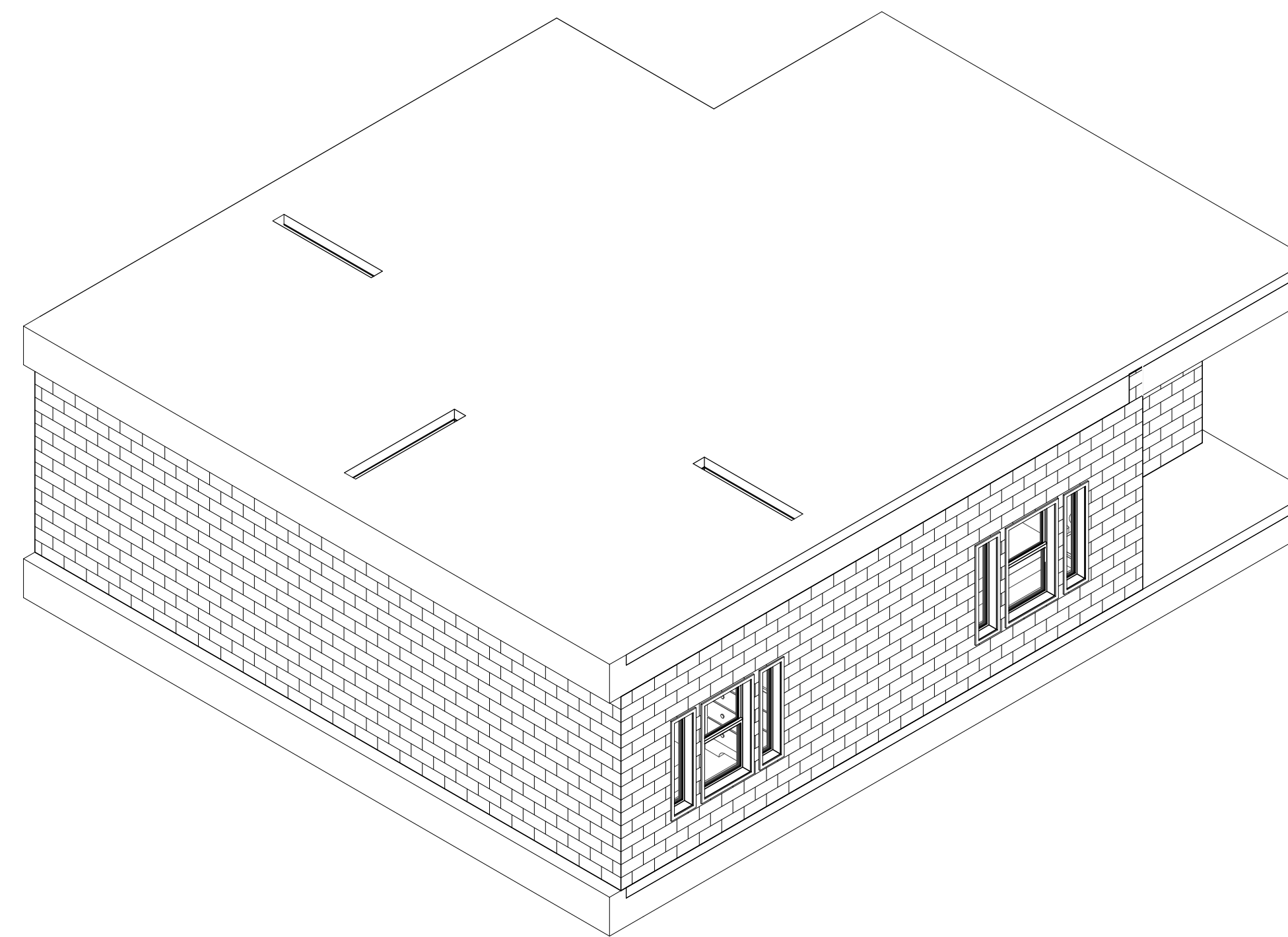
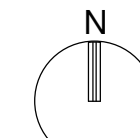
Designed By: Designer

Drawn By: Author

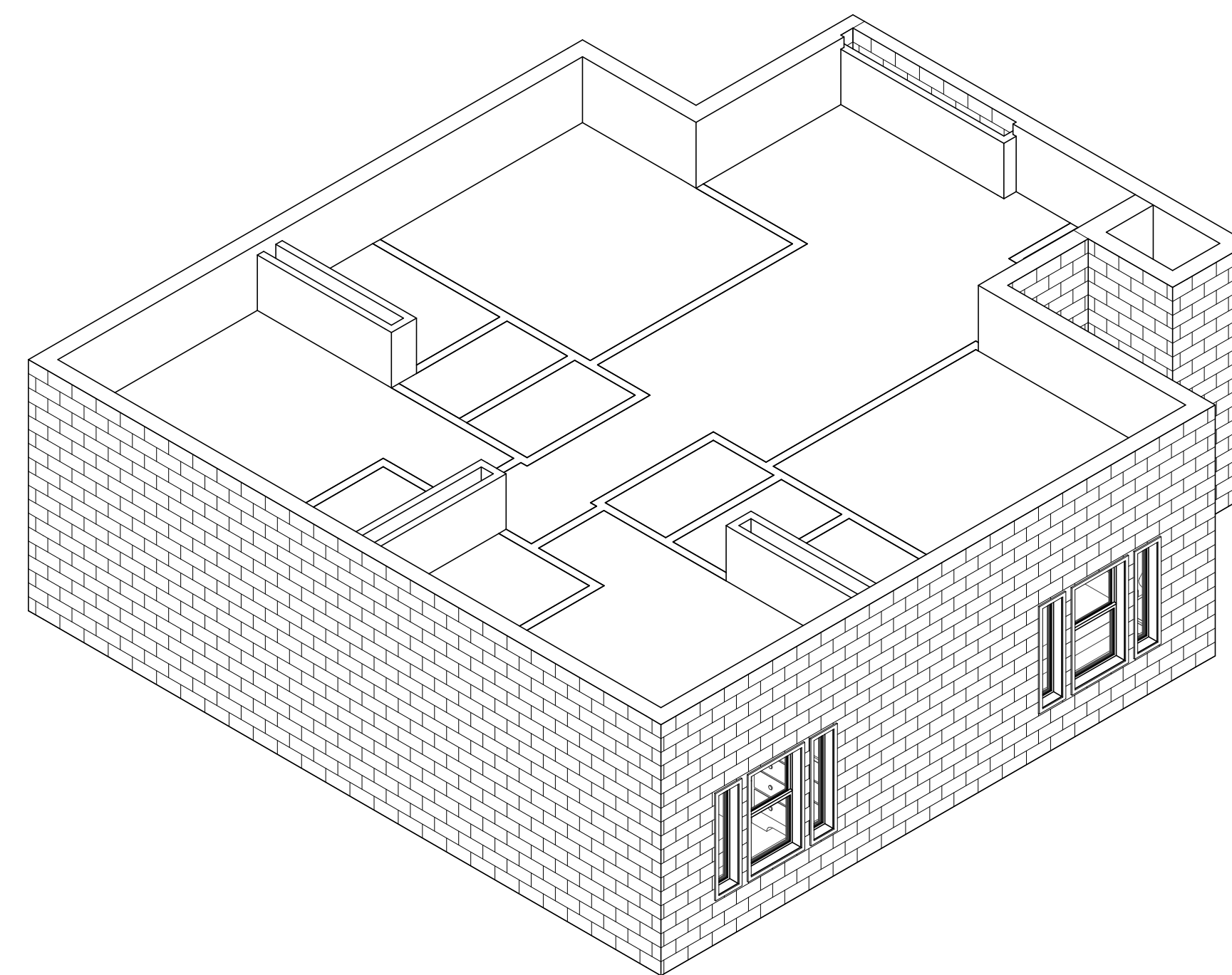
Checked By: Checker

Drawing No.:

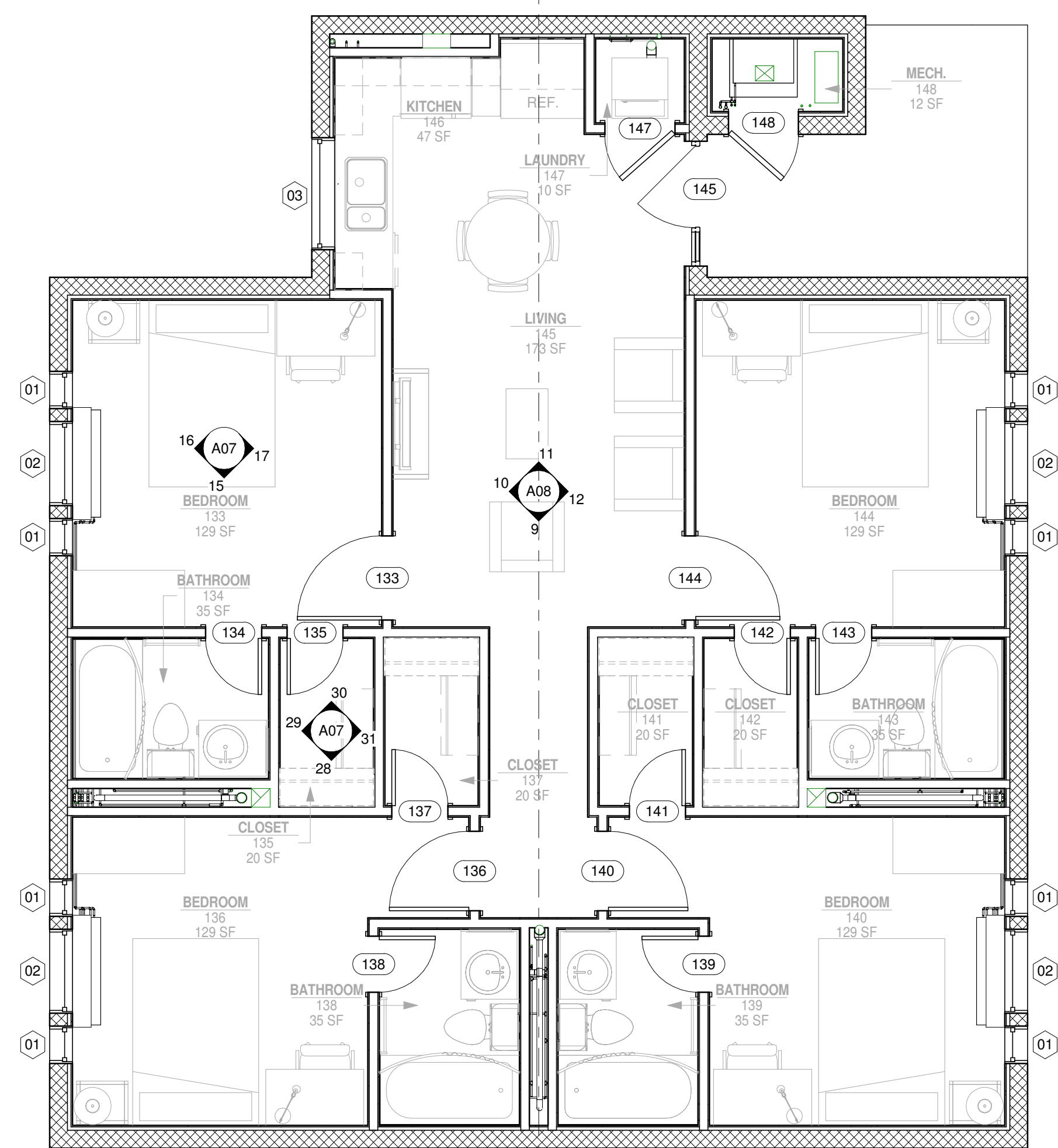
**A02**



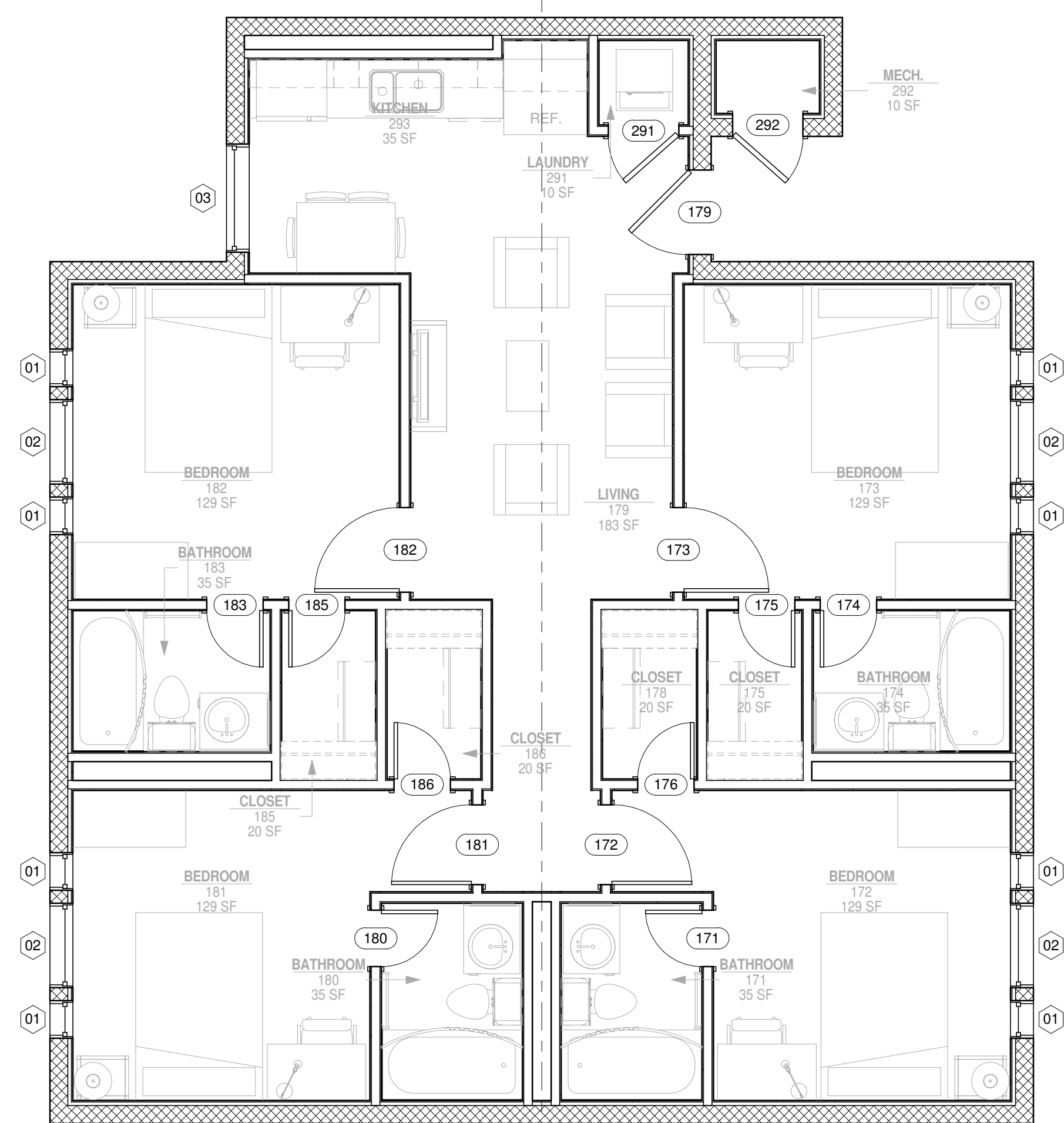
2 UNIT C.1



4 UNIT C.2



1 UNIT C.1  
1/4" = 1'-0"



3 UNIT C.2  
1/4" = 1'-0"

D

C

B

A

1

2

3

4

5

**AIR FORCE CENTER FOR ENGINEERING AND THE ENVIRONMENT (AFCEE)  
FACILITIES DYNAMIC PROTOTYPES DESIGN FOR DORMITORIES**

Scales: 1/4" = 1'-0"

Jacobs Project No.: FDWD1301

Drawing Title:

**PLANS/ AXON**

Date: 06 MARCH 2009

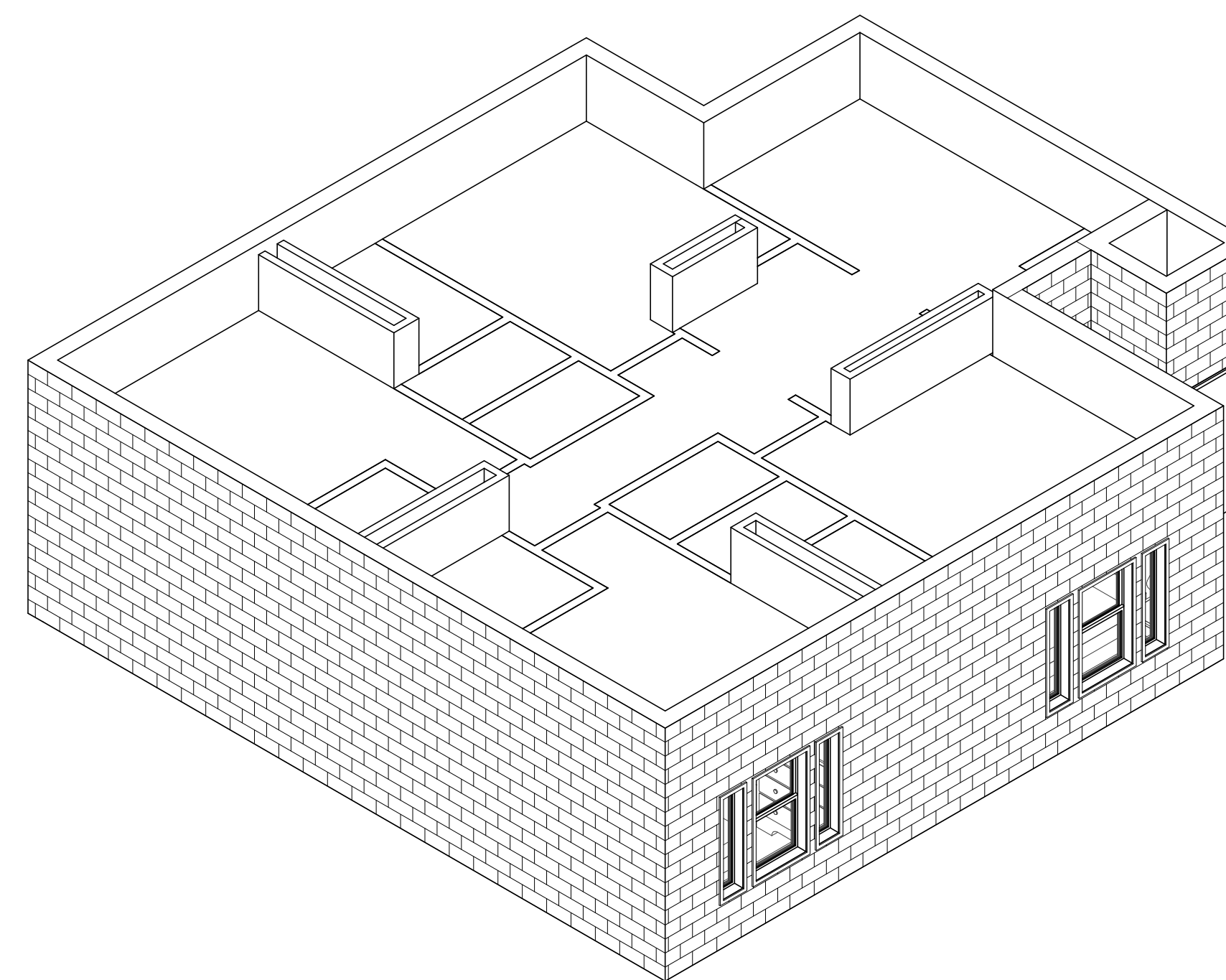
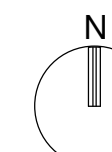
Designed By: Designer

Drawn By: Author

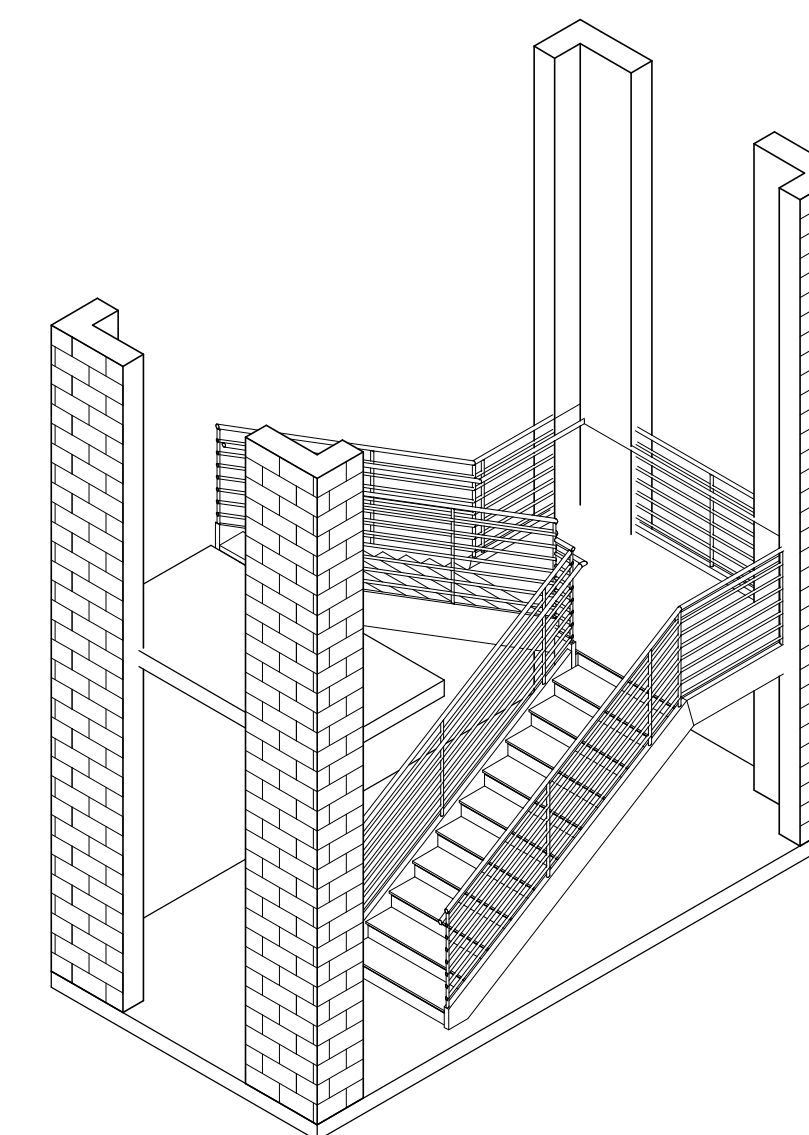
Checked By: Checker

Drawing No.:

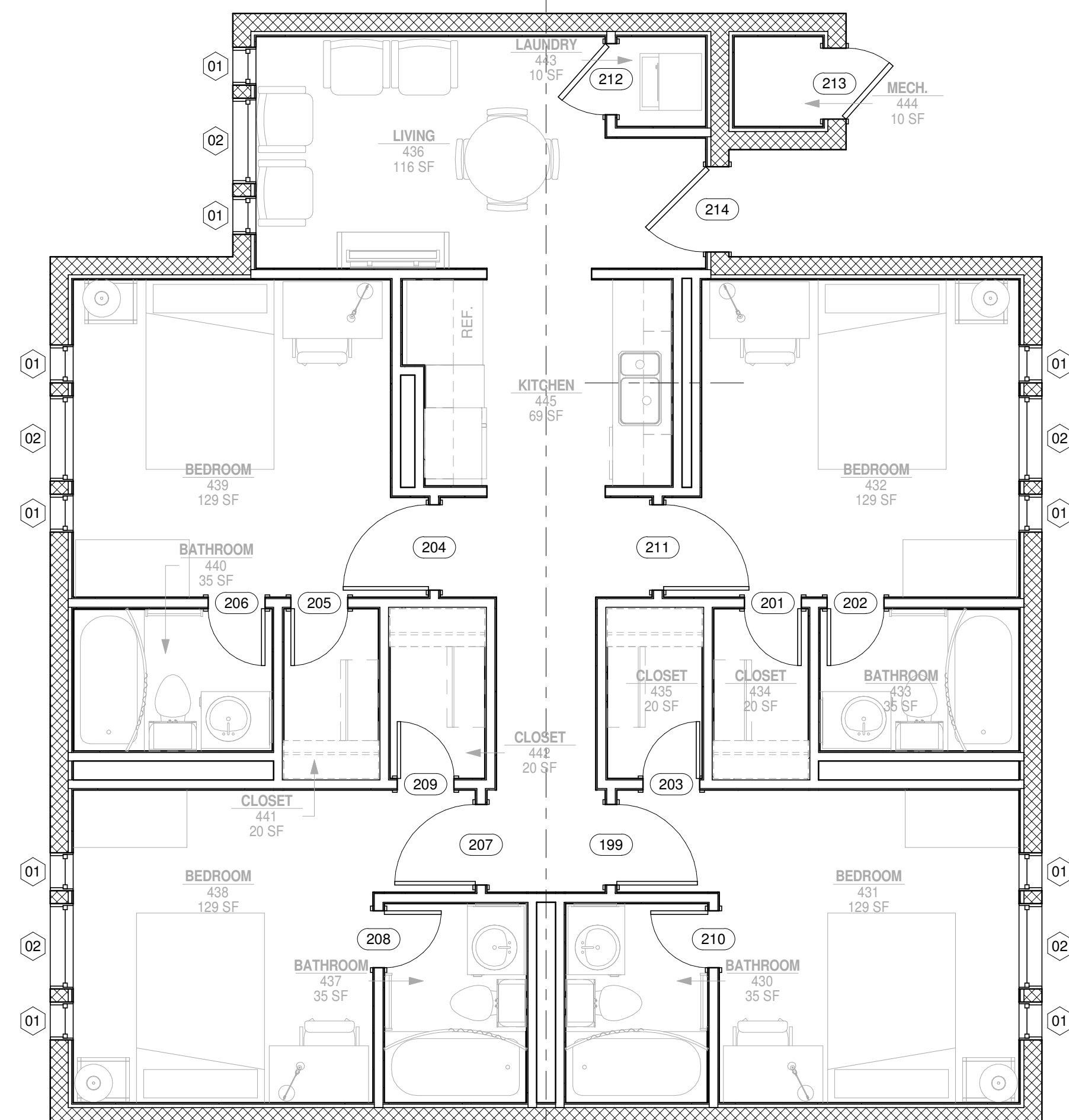
**A03**



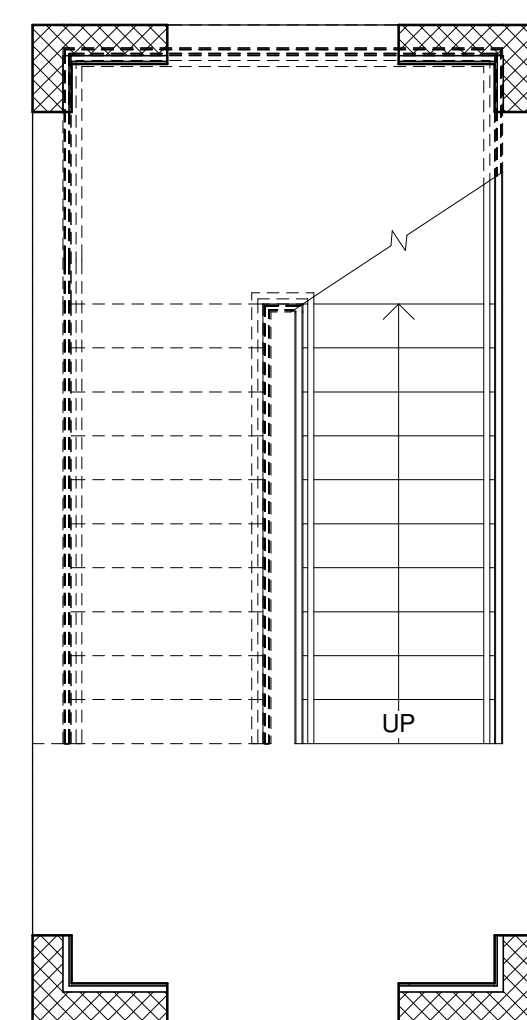
② UNIT C.3



④ STAIRS



① UNIT C.3  
1/4" = 1'-0"



③ STAIRS  
1/4" = 1'-0"

D

C

B

A

1

2

3

4

5

AIR FORCE CENTER FOR ENGINEERING AND THE ENVIRONMENT (AFCEE)  
FACILITIES DYNAMIC PROTOTYPES DESIGN FOR DORMITORIES

Scales: 1/4" = 1'-0"

Jacobs Project No.: FDWD1301

Drawing Title:

PLANS/ AXON

Date: 06 MARCH 2009

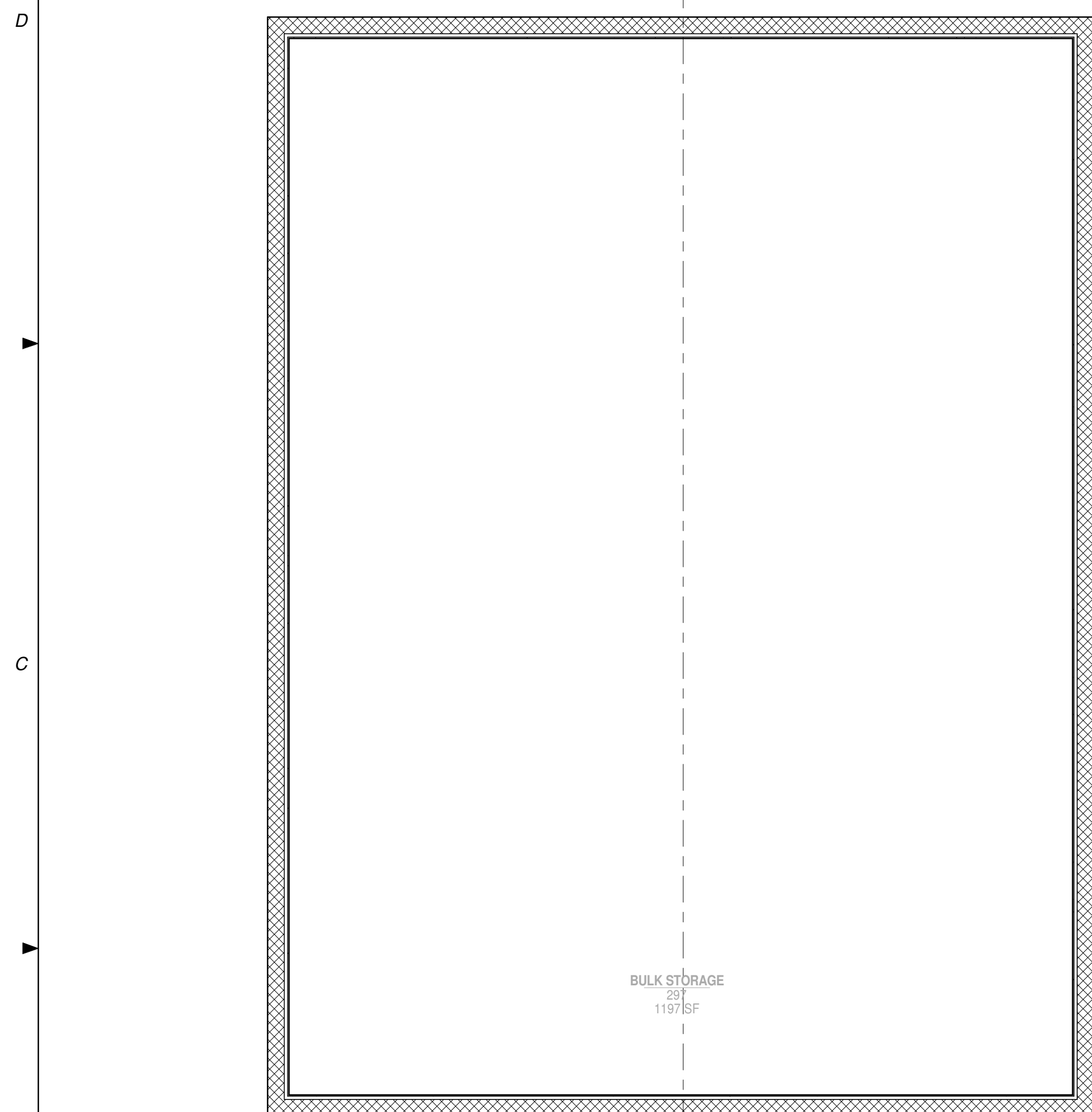
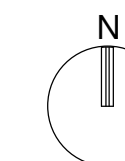
Designed By: Designer

Drawn By: Author

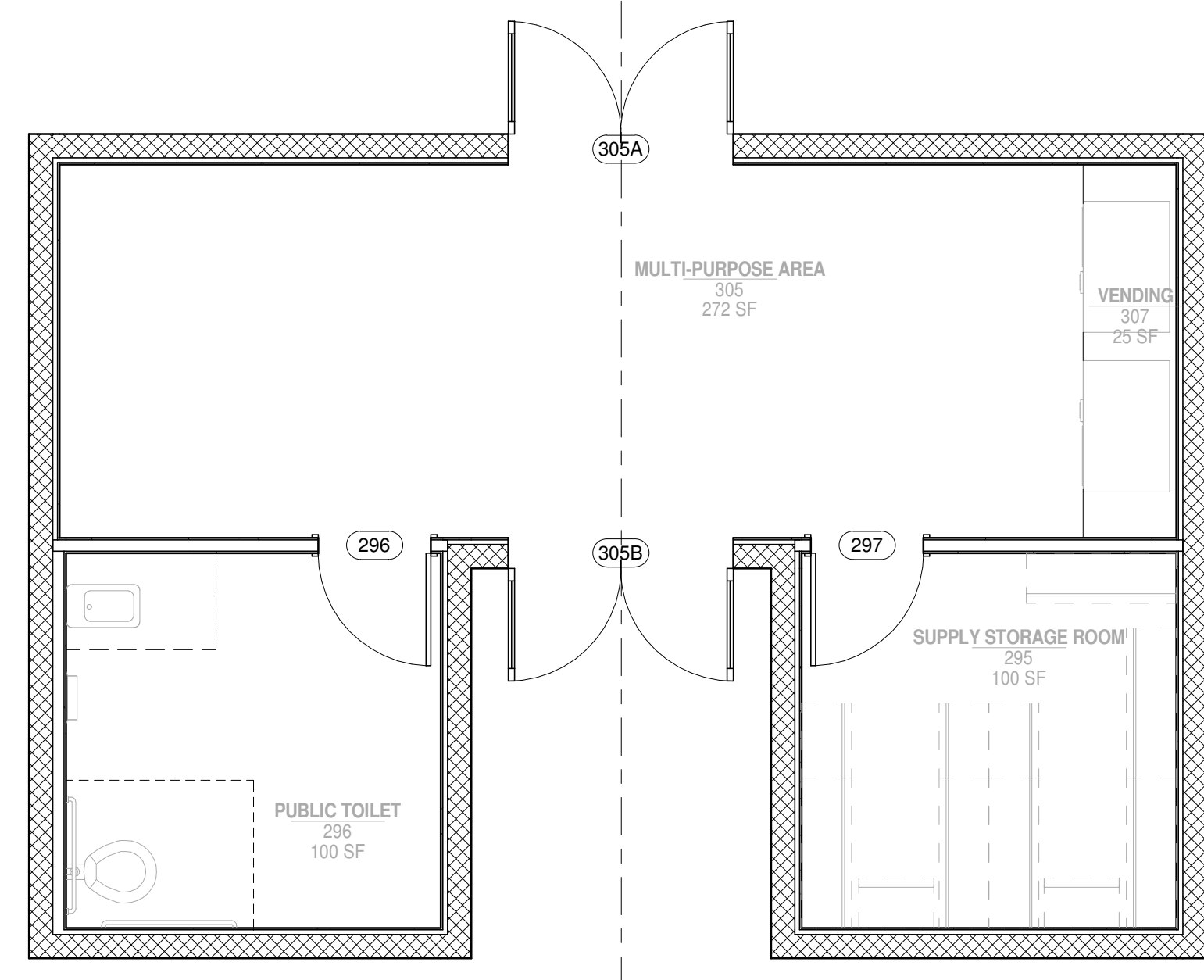
Checked By: Checker

Drawing No.:

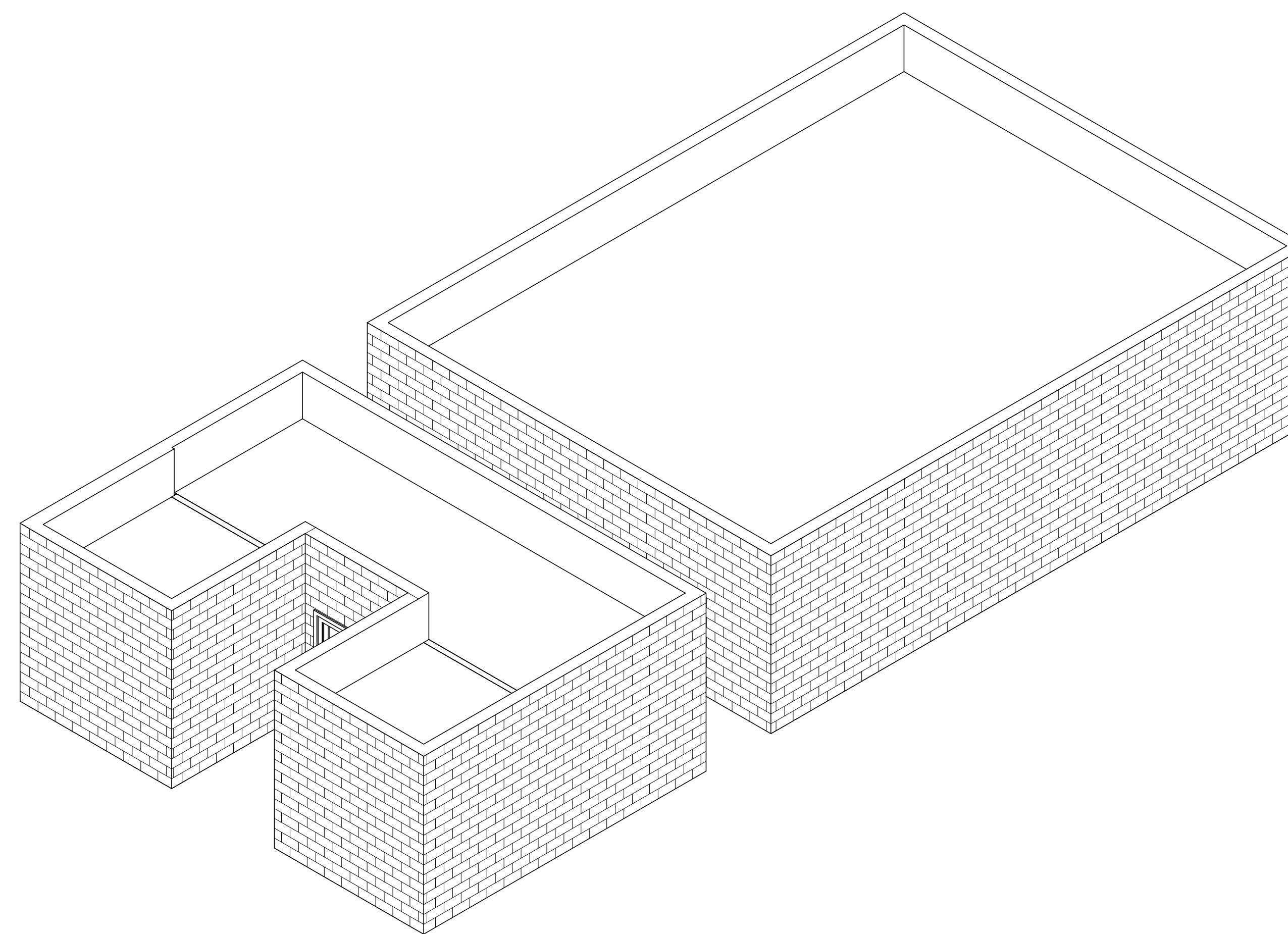
A04



1 COMMON AREA  
1/4" = 1'-0"



2 COMMON AREA



D  
C  
B  
A

1 2 3 4 5

AIR FORCE CENTER FOR ENGINEERING AND THE  
ENVIRONMENT (AFCEE)  
FACILITIES DYNAMIC PROTOTYPES DESIGN FOR  
DORMITORIES

Scales: 1/4" = 1'-0"

Jacobs Project No.: FDWD1301

Drawing Title:

**REFLECTIVE CEILING  
PLANS**

Date: 06 MARCH 2009

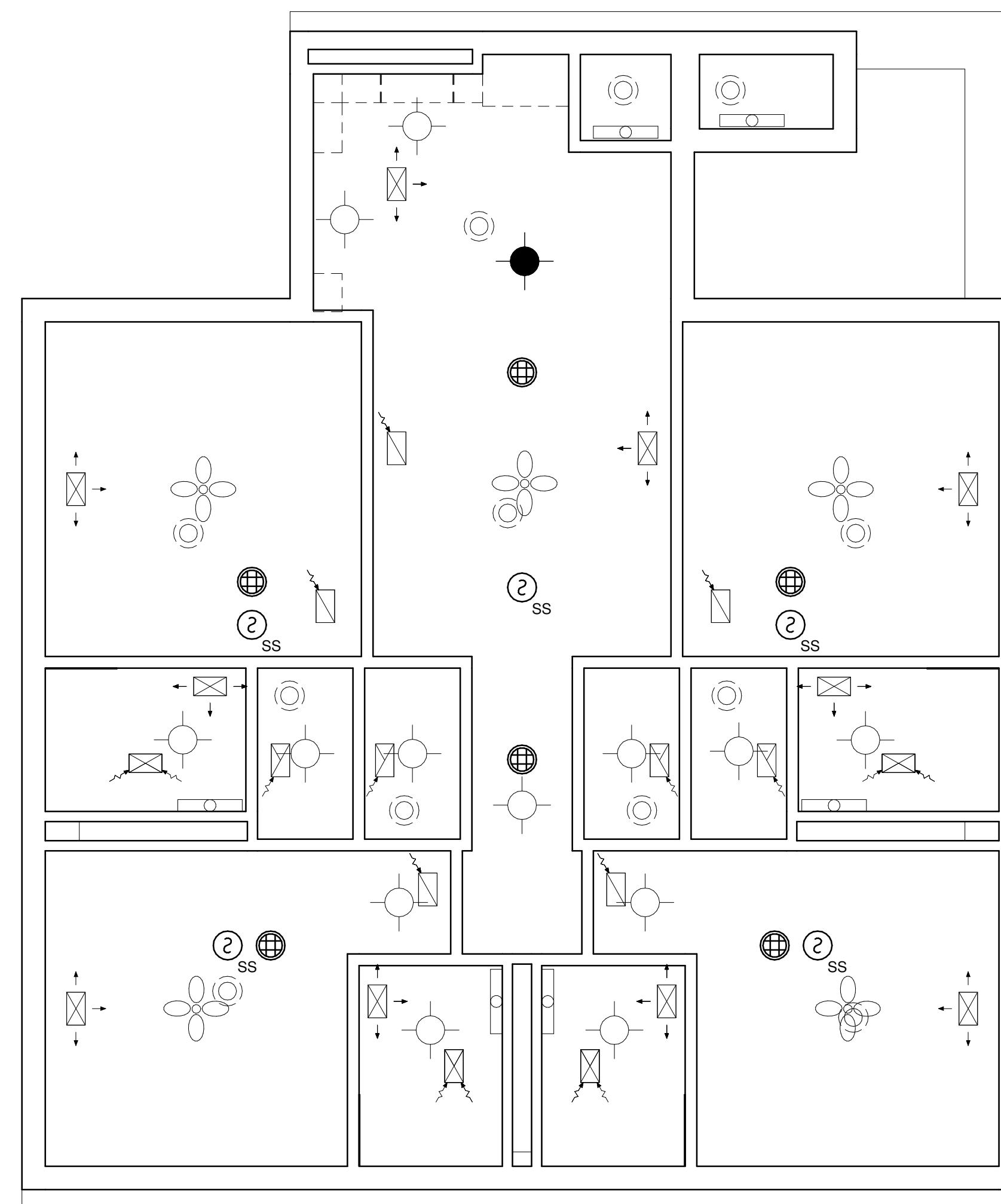
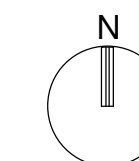
Designed By: Designer

Drawn By: Author

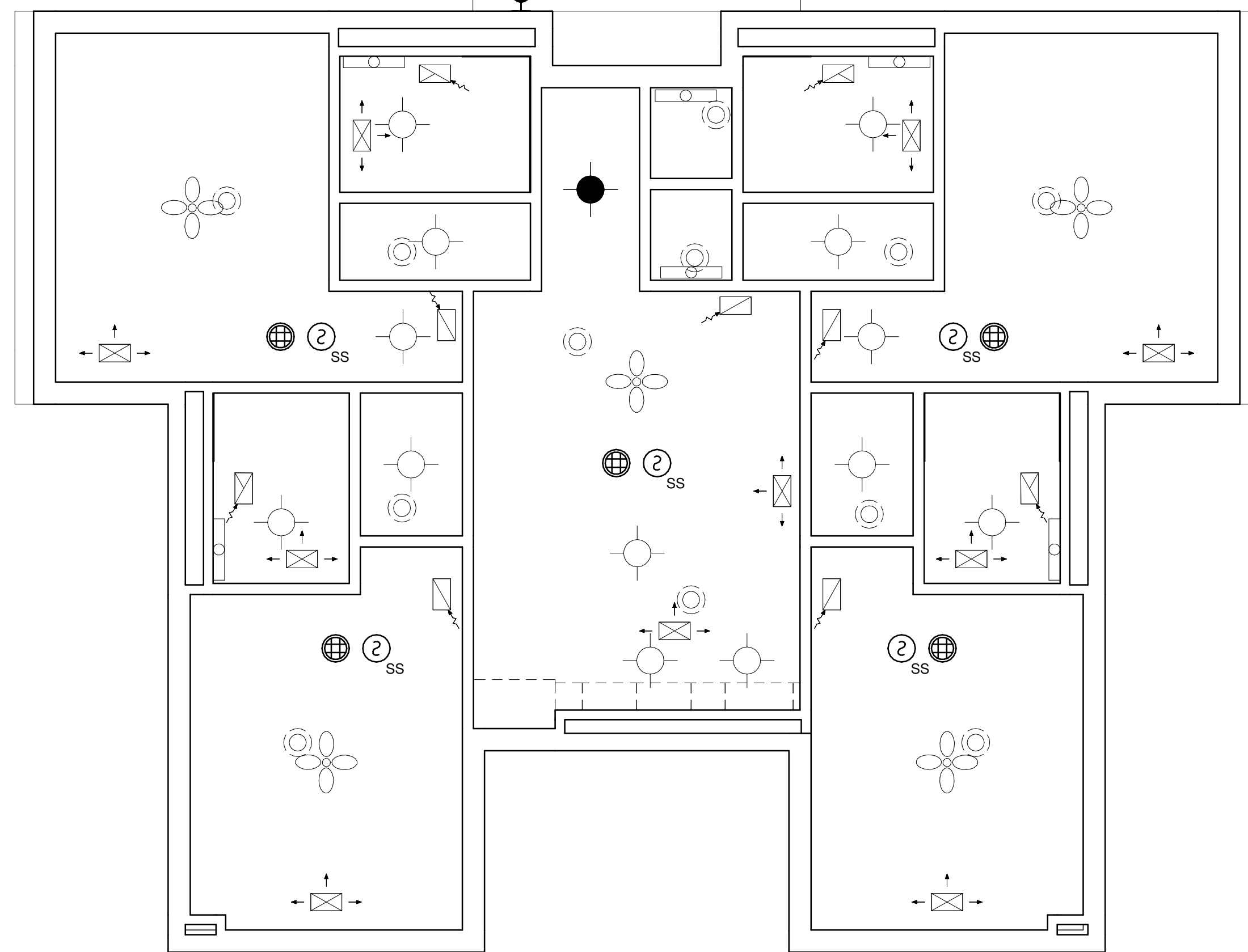
Checked By: Checker

Drawing No.:

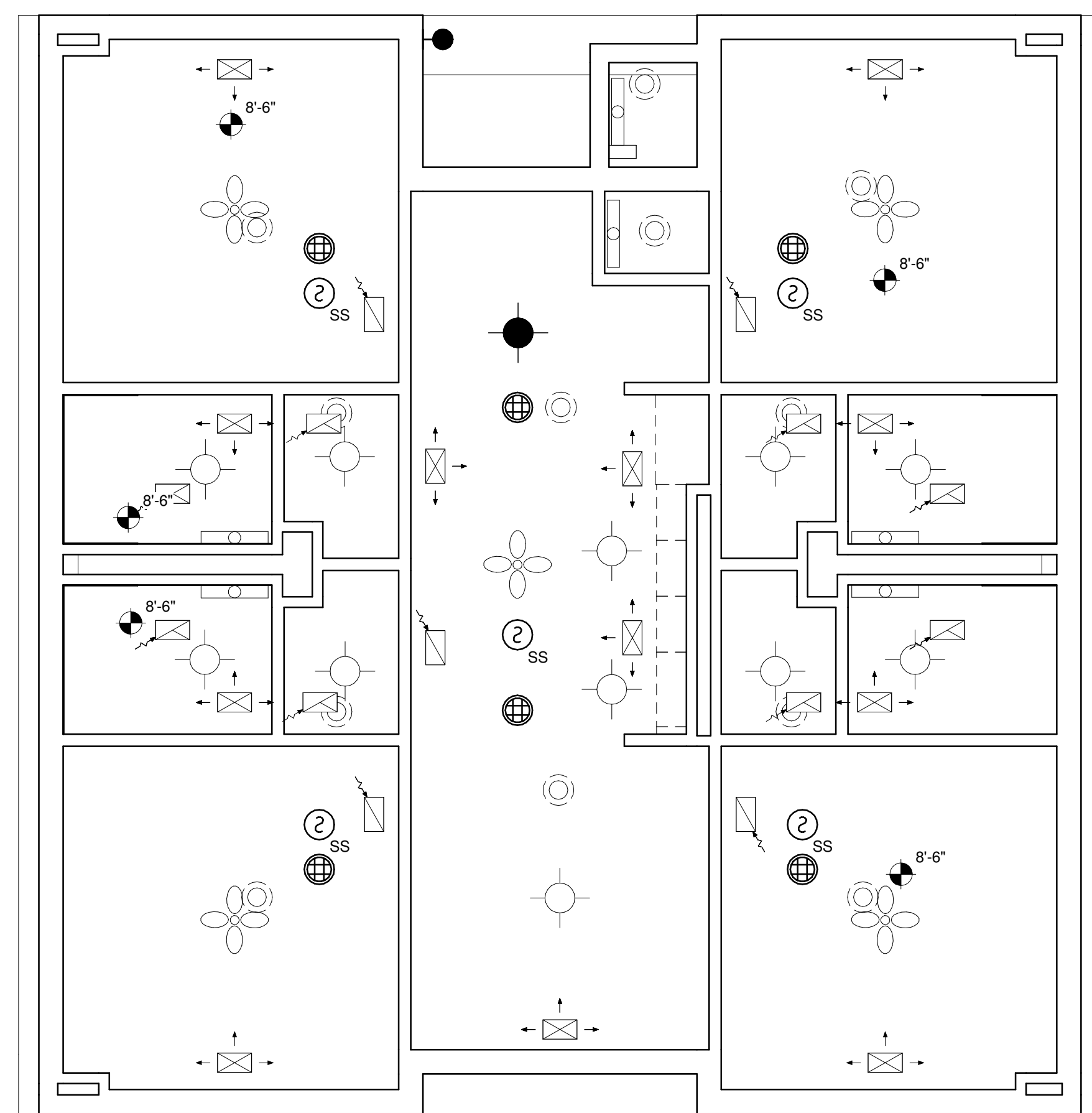
A05



③ UNIT C.1  
1/4" = 1'-0"



① UNIT A  
1/4" = 1'-0"



② UNIT B  
1/4" = 1'-0"

D

C

B

A

1

2

3

4

5

AIR FORCE CENTER FOR ENGINEERING AND THE ENVIRONMENT (AFCEE) FACILITIES DYNAMIC PROTOTYPES DESIGN FOR DORMITORIES

Scales: 1/4" = 1'-0"

Jacobs Project No.: FDWD1301

Drawing Title:

**BUILDING ELEVATIONS**

Date: 06 MARCH 2009

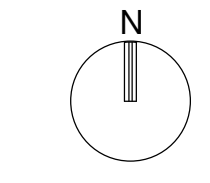
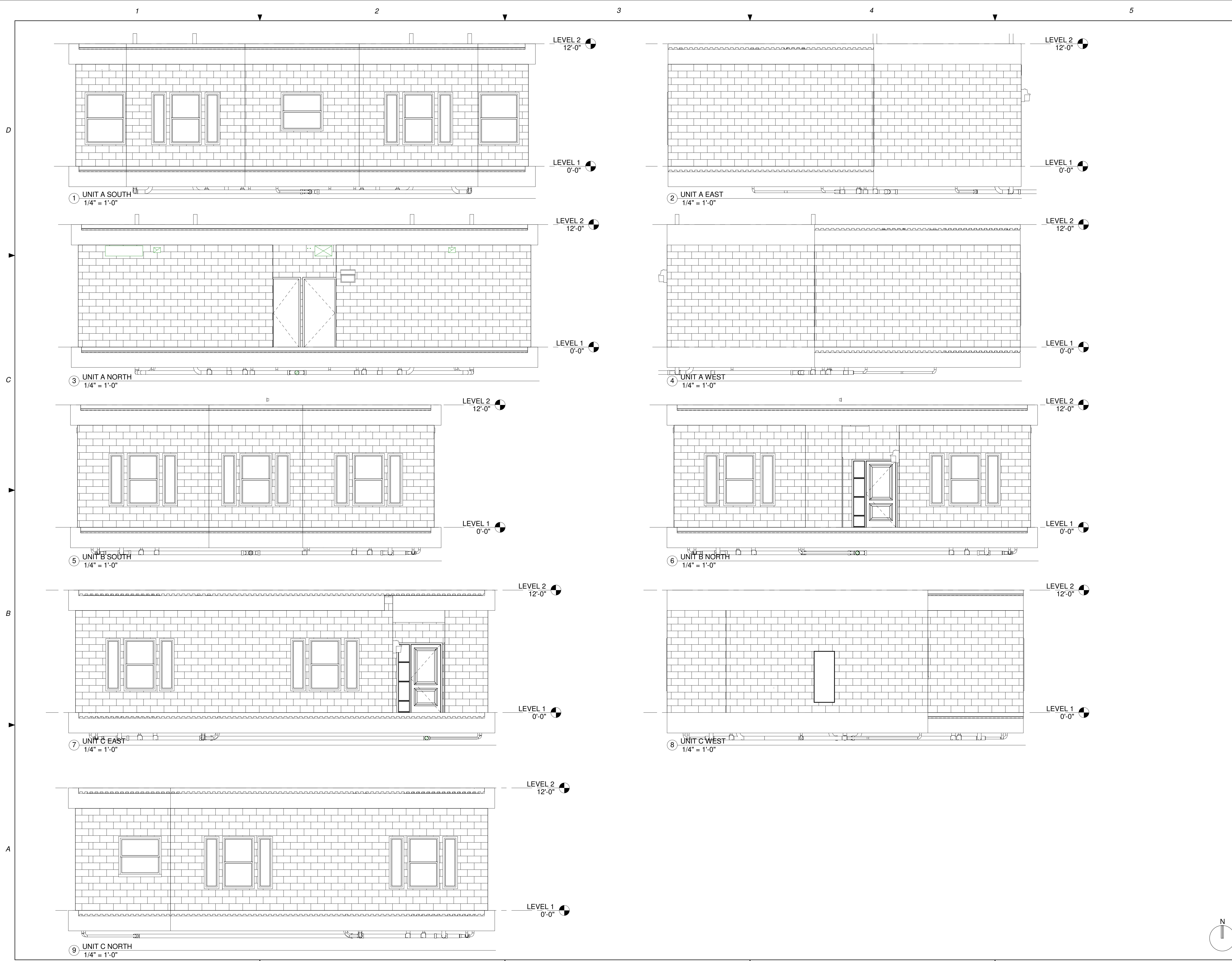
Designed By: Designer

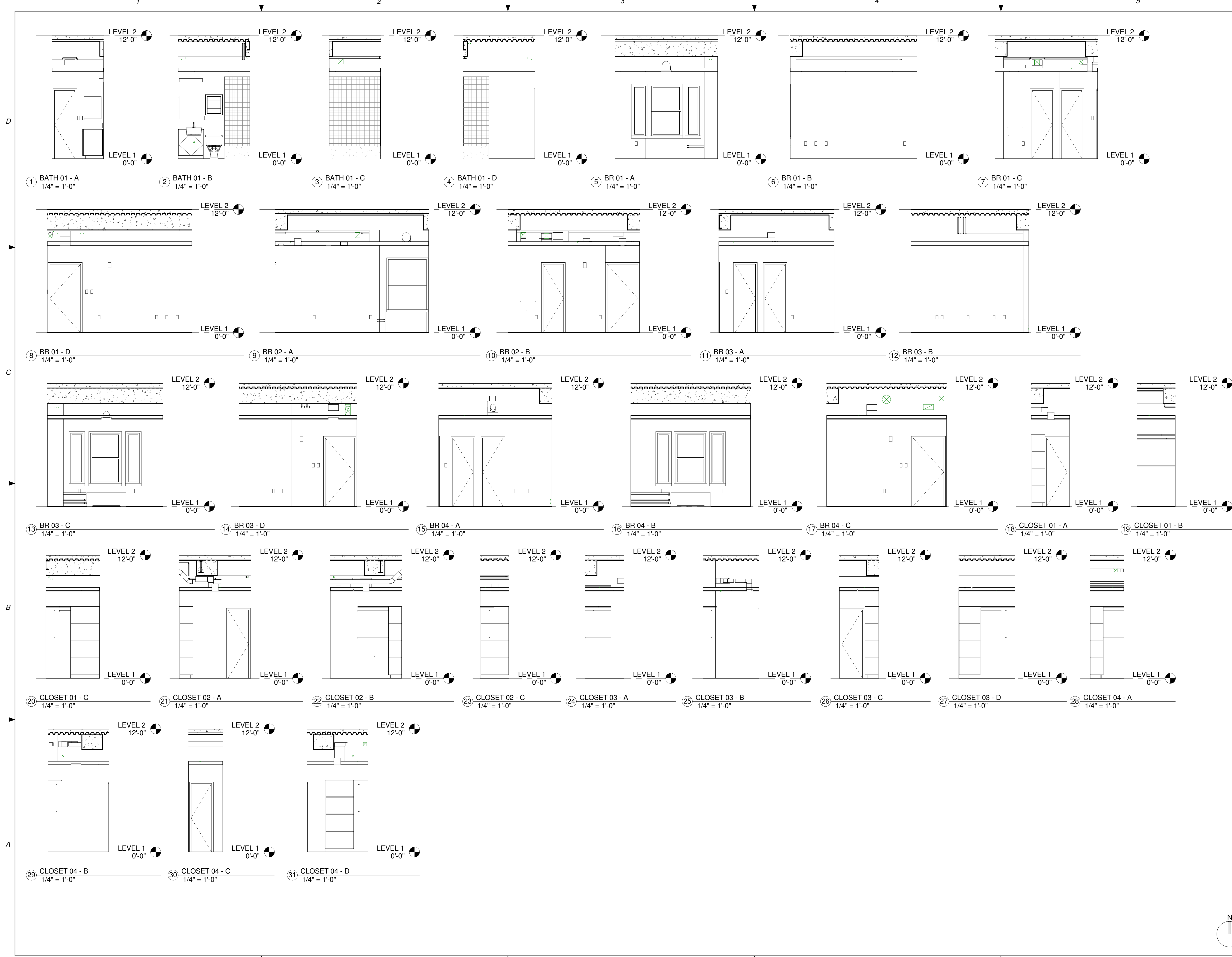
Drawn By: Author

Checked By: Checker

Drawing No.:

**A06**





Scales: 1/4" = 1'-0"

Jacobs Project No.: FDWD1301

Drawing Title:

INTERIOR ELEVATIONS

Date: 06 MARCH 2009

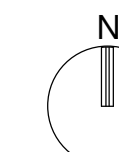
Designed By: Designer

Drawn By: Author

Checked By: Checker

Drawing No.:

A07

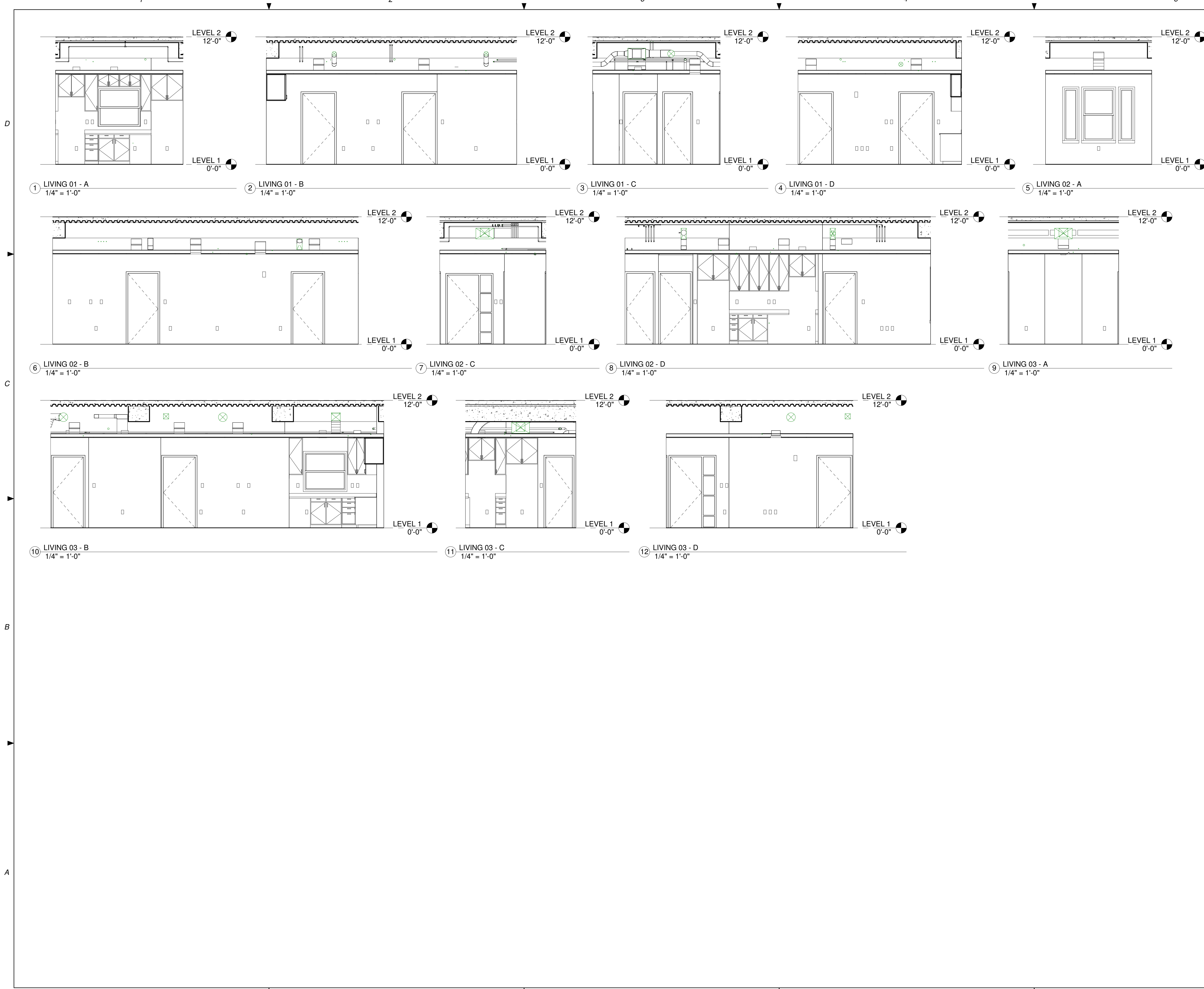


NOT FOR  
CONSTRUCTION

911 Central Parkway N., Suite 425 San Antonio, TX 78323  
501 North Broadway, St. Louis, Missouri 63102-2121

Revision:  
Date: By: Description:

**AIR FORCE CENTER FOR ENGINEERING AND THE  
ENVIRONMENT (AFCEE)  
FACILITIES DYNAMIC PROTOTYPES DESIGN FOR  
DORMITORIES**



Scales: 1/4" = 1'-0"

Jacobs Project No.: FDWD1301

Drawing Title:

**INTERIOR  
ELEVATIONS**

Date: 06 MARCH 2009

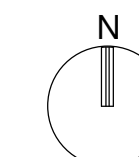
Designed By: Designer

Drawn By: Author

Checked By: Checker

Drawing No.:

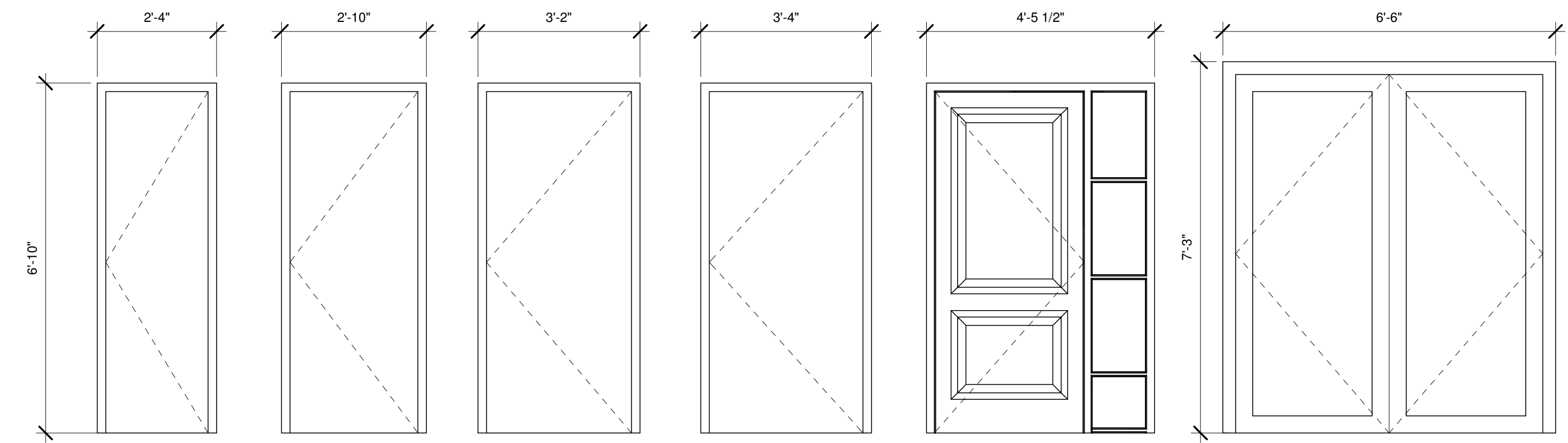
A08





AIR FORCE CENTER FOR ENGINEERING AND THE ENVIRONMENT (AFCEE)  
FACILITIES DYNAMIC PROTOTYPES DESIGN FOR DORMITORIES

Door Schedule														
Door Number	Type	Door				Glazing	Fire Rating	Hardware	Frame				Comments	
		Width	Height	Thickness	Material				Finish	Type	Material	Finish		Jamb
102	01	2'-0"	6'-8"	0'-1 1/2"	WOOD	STAINED					HM	PAINTED		
103	01	2'-0"	6'-8"	0'-1 1/2"	WOOD	STAINED					HM	PAINTED		
106	01	2'-0"	6'-8"	0'-1 1/2"	WOOD	STAINED					HM	PAINTED		
107	01	2'-0"	6'-8"	0'-1 1/2"	WOOD	STAINED					HM	PAINTED		
109	01	2'-0"	6'-8"	0'-1 1/2"	WOOD	STAINED					HM	PAINTED		
110	01	2'-0"	6'-8"	0'-1 1/2"	WOOD	STAINED					HM	PAINTED		
114	01	2'-0"	6'-8"	0'-1 1/2"	WOOD	STAINED					HM	PAINTED		
115	01	2'-0"	6'-8"	0'-1 1/2"	WOOD	STAINED					HM	PAINTED		
118	01	2'-0"	6'-8"	0'-1 1/2"	WOOD	STAINED					HM	PAINTED		
119	01	2'-0"	6'-8"	0'-1 1/2"	WOOD	STAINED					HM	PAINTED		
120	01	2'-0"	6'-8"	0'-1 1/2"	WOOD	STAINED					HM	PAINTED		
121	01	2'-0"	6'-8"	0'-1 1/2"	WOOD	STAINED					HM	PAINTED		
128	01	2'-0"	6'-8"	0'-1 1/2"	WOOD	STAINED					HM	PAINTED		
129	01	2'-0"	6'-8"	0'-1 1/2"	WOOD	STAINED					HM	PAINTED		
130	01	2'-0"	6'-8"	0'-1 1/2"	WOOD	STAINED					HM	PAINTED		
131	01	2'-0"	6'-8"	0'-1 1/2"	WOOD	STAINED					HM	PAINTED		
134	01	2'-0"	6'-8"	0'-1 1/2"	WOOD	STAINED					HM	PAINTED		
135	01	2'-0"	6'-8"	0'-1 1/2"	WOOD	STAINED					HM	PAINTED		
137	01	2'-0"	6'-8"	0'-1 1/2"	WOOD	STAINED					HM	PAINTED		
138	01	2'-0"	6'-8"	0'-1 1/2"	WOOD	STAINED					HM	PAINTED		
139	01	2'-0"	6'-8"	0'-1 1/2"	WOOD	STAINED					HM	PAINTED		
141	01	2'-0"	6'-8"	0'-1 1/2"	WOOD	STAINED					HM	PAINTED		
142	01	2'-0"	6'-8"	0'-1 1/2"	WOOD	STAINED					HM	PAINTED		
143	01	2'-0"	6'-8"	0'-1 1/2"	WOOD	STAINED					HM	PAINTED		
171	01	2'-0"	6'-8"	0'-1 1/2"	WOOD	STAINED					HM	PAINTED		
174	01	2'-0"	6'-8"	0'-1 1/2"	WOOD	STAINED					HM	PAINTED		
175	01	2'-0"	6'-8"	0'-1 1/2"	WOOD	STAINED					HM	PAINTED		
176	01	2'-0"	6'-8"	0'-1 1/2"	WOOD	STAINED					HM	PAINTED		
180	01	2'-0"	6'-8"	0'-1 1/2"	WOOD	STAINED					HM	PAINTED		
183	01	2'-0"	6'-8"	0'-1 1/2"	WOOD	STAINED					HM	PAINTED		
185	01	2'-0"	6'-8"	0'-1 1/2"	WOOD	STAINED					HM	PAINTED		
186	01	2'-0"	6'-8"	0'-1 1/2"	WOOD	STAINED					HM	PAINTED		
201	01	2'-0"	6'-8"	0'-1 1/2"	WOOD	STAINED					HM	PAINTED		
202	01	2'-0"	6'-8"	0'-1 1/2"	WOOD	STAINED					HM	PAINTED		
203	01	2'-0"	6'-8"	0'-1 1/2"	WOOD	STAINED					HM	PAINTED		
205	01	2'-0"	6'-8"	0'-1 1/2"	WOOD	STAINED					HM	PAINTED		
206	01	2'-0"	6'-8"	0'-1 1/2"	WOOD	STAINED					HM	PAINTED		
208	01	2'-0"	6'-8"	0'-1 1/2"	WOOD	STAINED					HM	PAINTED		
209	01	2'-0"	6'-8"	0'-1 1/2"	WOOD	STAINED					HM	PAINTED		
210	01	2'-0"	6'-8"	0'-1 1/2"	WOOD	STAINED					HM	PAINTED		
104	02	2'-6"	6'-8"	0'-1 1/2"	WOOD	STAINED					HM	PAINTED		
105	26	2'-6"	6'-8"	0'-1 1/2"	WOOD	STAINED					HM	PAINTED		
124	02	2'-6"	6'-8"	0'-1 1/2"	WOOD	STAINED					HM	PAINTED		
147	02	2'-6"	6'-8"	0'-1 1/2"	WOOD	STAINED					HM	PAINTED		
148	02	2'-6"	6'-8"	0'-1 1/2"	WOOD	STAINED					HM	PAINTED		
212	02	2'-6"	6'-8"	0'-1 1/2"	WOOD	STAINED					HM	PAINTED		
213	02	2'-6"	6'-8"	0'-1 1/2"	WOOD	STAINED					HM	PAINTED		
291	02	2'-6"	6'-8"	0'-1 1/2"	WOOD	STAINED					HM	PAINTED		
292	02	2'-6"	6'-8"	0'-1 1/2"	WOOD	STAINED					HM	PAINTED		
117	03	2'-10"	6'-8"	0'-1 1/2"	WOOD	STAINED					HM	PAINTED		
122	03	2'-10"	6'-8"	0'-1 1/2"	WOOD	STAINED					HM	PAINTED		
123	03	2'-10"	6'-8"	0'-1 1/2"	WOOD	STAINED					HM	PAINTED		
127	03	2'-10"	6'-8"	0'-1 1/2"	WOOD	STAINED					HM	PAINTED		
132	03	2'-10"	6'-8"	0'-1 1/2"	WOOD	STAINED					HM	PAINTED		
136	03	2'-10"	6'-8"	0'-1 1/2"	WOOD	STAINED					HM	PAINTED		
140	03	2'-10"	6'-8"	0'-1 1/2"	WOOD	STAINED					HM	PAINTED		
172	03	2'-10"	6'-8"	0'-1 1/2"	WOOD	STAINED					HM	PAINTED		
181	03	2'-10"	6'-8"	0'-1 1/2"	WOOD	STAINED					HM	PAINTED		
199	03	2'-10"	6'-8"	0'-1 1/2"	WOOD	STAINED					HM	PAINTED		
207	03	2'-10"	6'-8"	0'-1 1/2"	WOOD	STAINED					HM	PAINTED		
101	04	3'-0"	6'-8"	0'-1 1/2"	WOOD	STAINED					HM	PAINTED		
108	04	3'-0"	6'-8"	0'-1 1/2"	WOOD	STAINED					HM	PAINTED		
111	04	3'-0"	6'-8"	0'-1 1/2"	WOOD	STAINED					HM	PAINTED		
112	05	3'-0"	6'-8"	0'-1 1/2"	HM	PAINTED					HM	PAINTED		
116	04	3'-0"	6'-8"	0'-1 1/2"	WOOD	STAINED					HM	PAINTED		
133	04	3'-0"	6'-8"	0'-1 1/2"	WOOD	STAINED					HM	PAINTED		
144	04	3'-0"	6'-8"	0'-1 1/2"	WOOD	STAINED					HM	PAINTED		
173	04	3'-0"	6'-8"	0'-1 1/2"	WOOD	STAINED					HM	PAINTED		
179	05	3'-0"	6'-8"	0'-1 1/2"	HM	PAINTED					HM	PAINTED		
182	04	3'-0"	6'-8"	0'-1 1/2"	WOOD	STAINED					HM	PAINTED		
204	04	3'-0"	6'-8"	0'-1 1/2"	WOOD	STAINED					HM	PAINTED		
211	04	3'-0"	6'-8"	0'-1 1/2"	WOOD	STAINED					HM	PAINTED		
214	05	3'-0"	6'-8"	0'-1 1/2"	HM	PAINTED					HM	PAINTED		
296	04	3'-0"	6'-8"	0'-1 1/2"	WOOD	STAINED					HM	PAINTED		
297	04	3'-0"	6'-8"	0'-1 1/2"	WOOD	STAINED					HM	PAINTED		
125	06	5'-8 1/8"	6'-8"	0'-1 1/2"	HM	PAINTED					HM	PAINTED		
145	07	5'-8 1/8"	6'-10"	0'-1 1/2"	HM	PAINTED					HM	PAINTED		
305A	08	6'-0"	7'-0"	0'-1 1/2"	GLASS						ALUM			
305B	08	6'-0"	7'-0"	0'-1 1/2"	GLASS						ALUM			



DOOR LEGEND  
1/2" = 1'-0"

Scales: 1/2" = 1'-0"

Jacobs Project No.: FDWD1301

Drawing Title:

SCHEDULES

Date: 06 MARCH 2009

Designed By: Designer

Drawn By: Author

Checked By: Checker

Drawing No.:

A09

